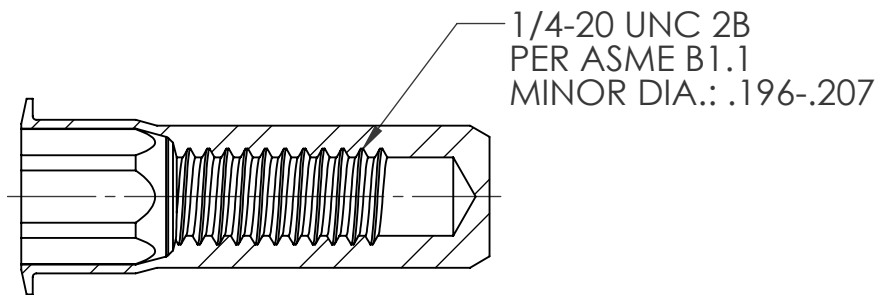
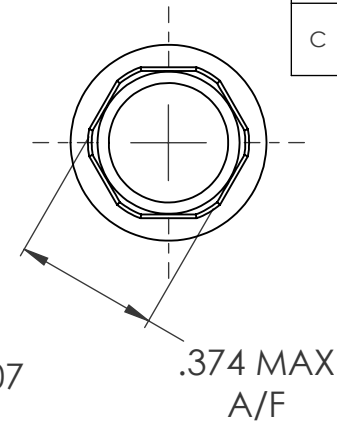
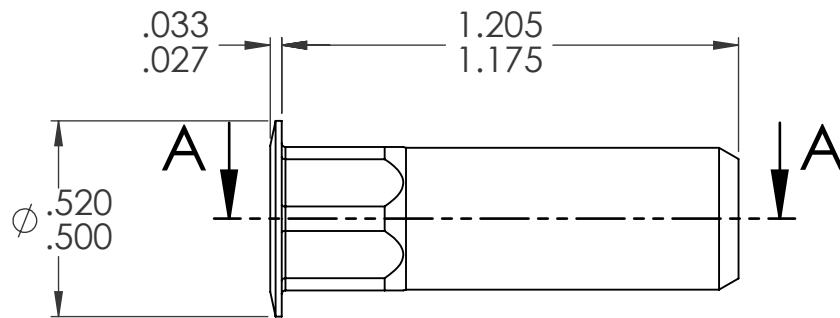


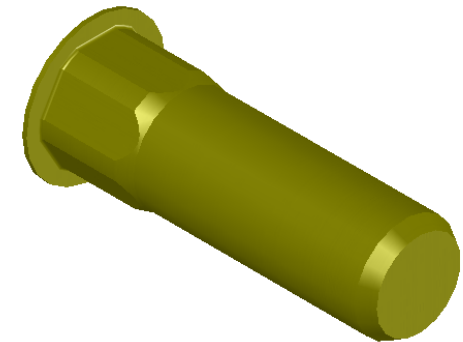
| REVISIONS | | | |
|-----------|--------------------------------|---------|------|
| REV. | DESCRIPTION | DATE | ECN |
| A | INITIAL RELEASE | 8/11/03 | |
| B | UPDATE LUBRICATION AND FINISH | 8/4/10 | 1345 |
| C | NEW FINISH PER SFS-01-001, SC2 | 1/21/15 | 1745 |




SECTION A-A

NOTE:

1. GRIP RANGE: .165 - .260
2. HOLE SIZE: .375 +.004/- .000 A/F AFTER ALL APPLIED FINISHES.
3. INSTALLED LENGTH: .915 MAX.
4. INSTALLED THREAD DEPTH: 1.085 REF.
5. LUBRICATION: OIL
6. INSTALLATION TOOL: SSG 802 SPIN SPIN



| | | | | | | | |
|---|-------------|---------|---|--|--------------|---------|---|
| <div>PROPRIETARY AND CONFIDENTIAL</div> <div>THIS DRAWING, AND THE INFORMATION CONTAINED HERIN, ARE THE PROPERTY OF SHEREX AND ARE NOT TO BE USED IN ANY MANNER DETRIMENT TO THE INTEREST OF THE COMPANY.</div> <div>SHEREX RESERVES THE RIGHT TO REVISE PART/DRAWING WITHOUT NOTICE.</div> | | | UNLESS OTHERWISE SPECIFIED: | | | |  |
| | | | DIMENSIONS ARE IN INCHES TOLERANCES: | DRAWN | JLA | 8/11/03 | |
| | | | ANGULAR: MACH±1 BEND ±1 TWO PLACE DECIMAL ±.01 THREE PLACE DECIMAL ±.005 | CHECKED | | | |
| | | | | ENG APPR. | JLA | 8/11/03 | |
| | | | INTERPRET GEOMETRIC TOLERANCING PER: ASME Y14.5M-1994 | MFG APPR. | AJP | 8/11/03 | |
| | | | | Q.A. | | | |
| | | | MATERIAL C1008/C1010 | COMMENTS: E-mail: info@sherex.com www.sherex.com Phone: 866-474-3739 Fax: 716-875-0358 | | | |
| | | | FINISH ZINC PLATE W/YELLOW TRIVALENT CHROMATE PER SFS-01-001, SC2 | | | | |
| | NEXT ASSY | USED ON | | | | | |
| | APPLICATION | | DO NOT SCALE DRAWING | | | | |
| | | | SIZE | DWG. NO. | REV | | |
| | | | A | CAH2-2520-260B | C | | |
| | | | SCALE: 2:1 | WEIGHT: .0094 kg | SHEET 1 OF 1 | | |