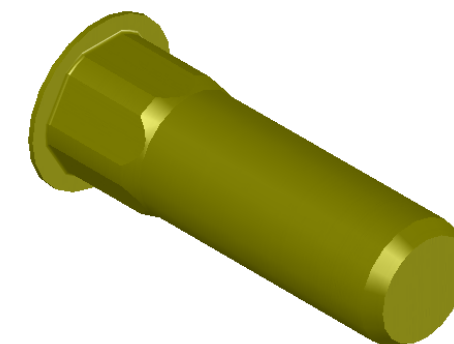
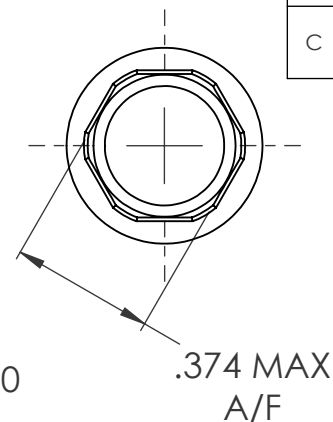


SECTION A-A

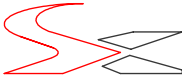


REVISIONS			
REV.	DESCRIPTION	DATE	ECN
A	INITIAL RELEASE	8/11/03	
B	UPDATE LUBRICATION AND FINISH	8/4/10	1345
C	NEW FINISH PER SFS-01-001, SC2	1/21/15	1745

NOTE:

1. GRIP RANGE: .165 - .260
2. HOLE SIZE: .375 +.004/-.000 A/F AFTER ALL APPLIED FINISHES.
3. INSTALLED LENGTH: .915 MAX.
4. INSTALLED THREAD DEPTH: 1.085 REF.
5. LUBRICATION: OIL
6. INSTALLATION TOOL: SSG 802 SPIN SPIN

**PROPRIETARY AND CONFIDENTIAL**  
THIS DRAWING, AND THE INFORMATION CONTAINED HEREIN, ARE THE PROPERTY OF SHEREX AND ARE NOT TO BE USED IN ANY MANNER DETRIMENTAL TO THE INTEREST OF THE COMPANY.  
  
SHEREX RESERVES THE RIGHT TO REVISE PART/DRAWING WITHOUT NOTICE.

		UNLESS OTHERWISE SPECIFIED:		NAME	DATE			
		DIMENSIONS ARE IN INCHES TOLERANCES:	DRAWN	JLA	8/11/03			
		ANGULAR: MACH±1    BEND ±1 TWO PLACE DECIMAL    ±.01 THREE PLACE DECIMAL    ±.005	CHECKED			TITLE:  HALF HEX LARGE FLANGE CLOSED END		
			ENG APPR.	JLA	8/11/03			
			MFG APPR.	AJP	8/11/03			
		INTERPRET GEOMETRIC TOLERANCING PER: ASME Y14.5M-1994	Q.A.					
		MATERIAL  C1008/C1010	COMMENTS: E-mail: info@sherex.com www.sherex.com Phone: 866-474-3739 Fax: 716-875-0358			SIZE <b>A</b>	DWG. NO. CAH2-2528-260B	REV C
NEXT ASSY	USED ON	FINISH ZINC PLATE W/YELLOW TRIVALENT CHROMATE PER SFS-01-001, SC2						
APPLICATION		DO NOT SCALE DRAWING				SCALE: 2:1    WEIGHT: .0091 kg    SHEET 1 OF 1		