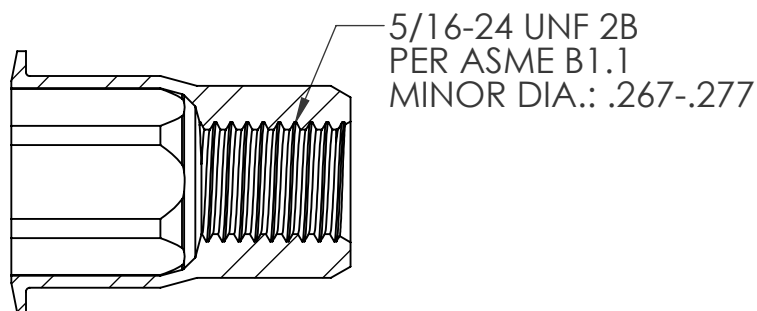
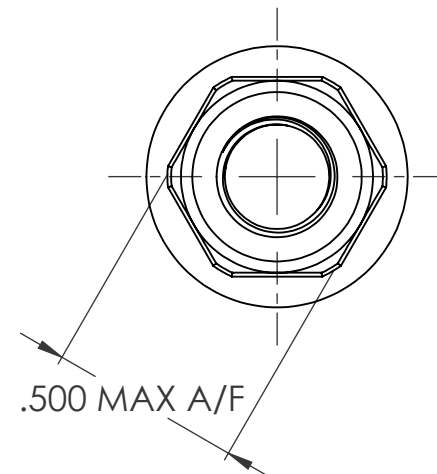
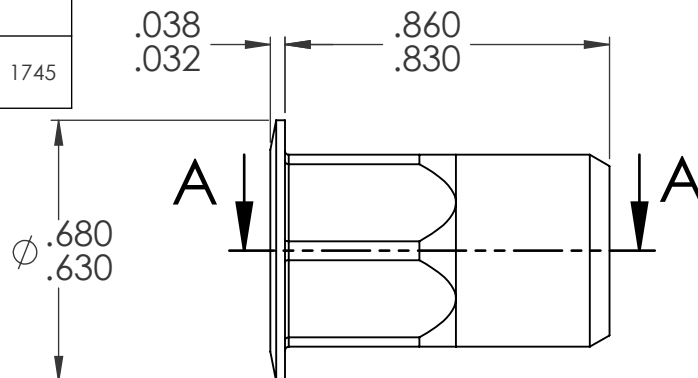
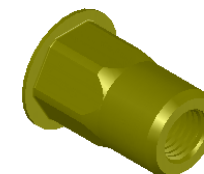


REVISIONS			
REV.	DESCRIPTION	DATE	ECN
A	INITIAL RELEASE	4/29/05	
B	NEW FINISH PER SFS-01-001, SC2	1/21/15	1745



SECTION A-A



NOTE:

1. GRIP RANGE: .150 - .312
2. HOLE SIZE: .500 +.004/-.000 A/F AFTER ALL APPLIED FINISHES.
3. INSTALLED LENGTH: .515 MAX.
4. LUBRICATION: WAX
5. INSTALLATION TOOL: SSG 803 SPIN SPIN

PROPRIETARY AND CONFIDENTIAL
THIS DRAWING, AND THE INFORMATION CONTAINED HEREIN, ARE THE PROPERTY OF SHEREX AND ARE NOT TO BE USED IN ANY MANNER DETRIMENT TO THE INTEREST OF THE COMPANY.

SHEREX RESERVES THE RIGHT TO REVISE PART/DRAWING WITHOUT NOTICE.

		UNLESS OTHERWISE SPECIFIED:					
		DIMENSIONS ARE IN INCHES TOLERANCES:		DRAWN		NAME	DATE
		ANGULAR: MACH ± 1 BEND ± 1 TWO PLACE DECIMAL $\pm .01$ THREE PLACE DECIMAL $\pm .005$		CHECKED		TOO	4/29/05
		INTERPRET GEOMETRIC TOLERANCING PER: ASME Y14.5M-1994		ENG APPR.		TOO	4/29/05
		MATERIAL		MFG APPR.		AJP	4/29/05
		C1008/C1010		Q.A.			
		FINISH		COMMENTS:			
		ZINC PLATE W/YELLOW TRIVALENT CHROMATE PER SFS-01-001, SC2		E-mail: info@sherex.com www.sherex.com Phone: 866-474-3739 Fax: 716-875-0358			
NEXT ASSY		USED ON				TITLE:	
						HALF HEX LARGE FLANGE OPEN END	
APPLICATION		DO NOT SCALE DRAWING				SIZE	DWG. NO.
						A	CAH2-3124-312
						SCALE: 2:1	WEIGHT: .0100 kg
						SHEET 1 OF 1	