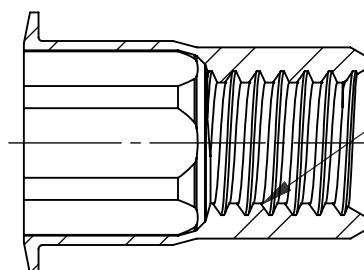
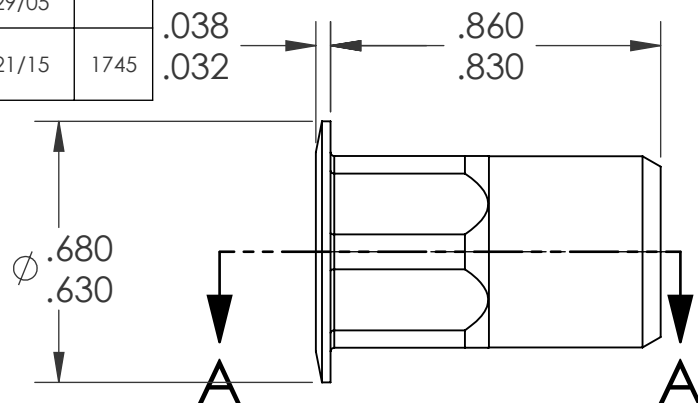
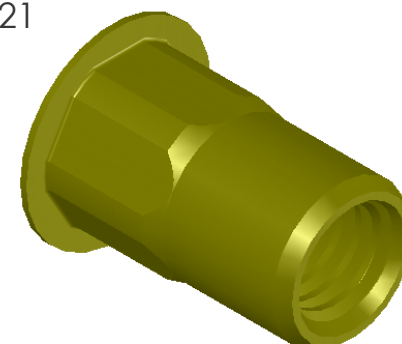
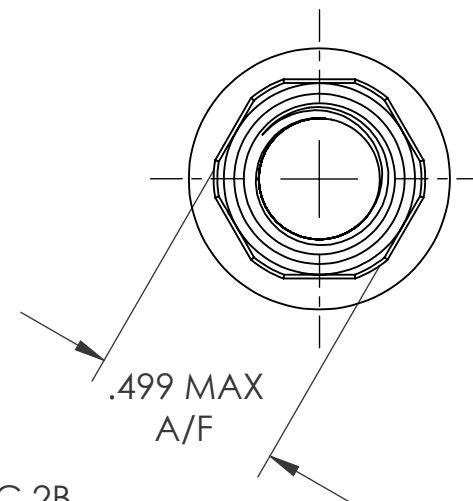


REVISIONS			
REV.	DESCRIPTION	DATE	ECN
A	INITIAL RELEASE	4/29/05	
B	NEW FINISH PER SFS-1-001, SC2	1/21/15	1745




SECTION A-A



NOTE:

- GRIP RANGE: .150 - .312
- HOLE SIZE: .500 +.004/-.000 A/F AFTER ALL APPLIED FINISHES.
- INSTALLED LENGTH: .515 MAX.
- LUBRICATION: WAX
- INSTALLATION TOOL: SSG-803 SPIN SPIN

**PROPRIETARY AND CONFIDENTIAL**  
THIS DRAWING, AND THE INFORMATION CONTAINED HEREIN, ARE THE PROPERTY OF SHEREX, AND ARE NOT TO BE USED IN ANY MANNER DETRIMENTAL TO THE INTEREST OF THE COMPANY.  
SHEREX SOLUTIONS RESERVES THE RIGHT TO REVISE PART/DRAWING WITHOUT NOTICE.

		UNLESS OTHERWISE SPECIFIED:		NAME	DATE			
		DIMENSIONS ARE IN INCHES TOLERANCES: ANGULAR: MACH ± 1 BEND ±1 TWO PLACE DECIMAL ±.02 THREE PLACE DECIMAL ±.010	DRAWN	TOO	4/29/05			
		INTERPRET GEOMETRIC TOLERANCING PER: ASME Y14.5M-1994	CHECKED					
		MATERIAL	ENG APPR.	TOO	4/29/05			
		FINISH	MFG APPR.	AJP	4/29/05			
NEXT ASSY	USED ON	ZINC PLATE W/YELLOW TRIVALENT CHROMATE PER SFS-01-001, SC2	Q.A.			TITLE:  LARGE FLANGE SEMI HEX OPEN END		
		C1008/C1010	COMMENTS: E-mail: info@sherex.com www.sherex.com Phone: 866-474-3739 Fax: 716-875-0358					
			SIZE			DWG. NO.		REV
			A			CAH2-3716-312		B
APPLICATION		DO NOT SCALE DRAWING	SCALE: 2:1			WEIGHT:.0085 kg.		SHEET 1 OF 1