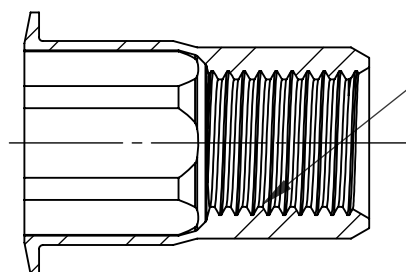
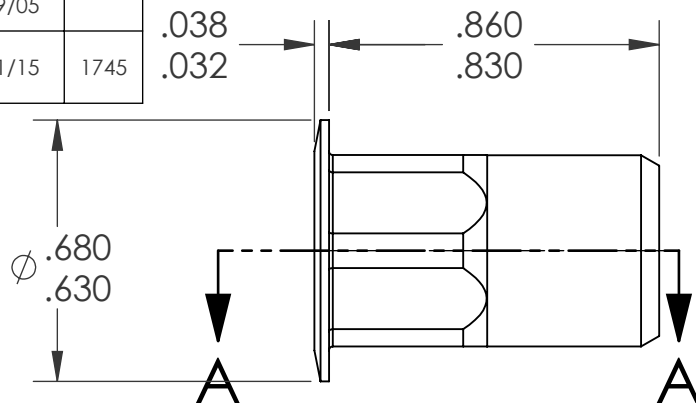
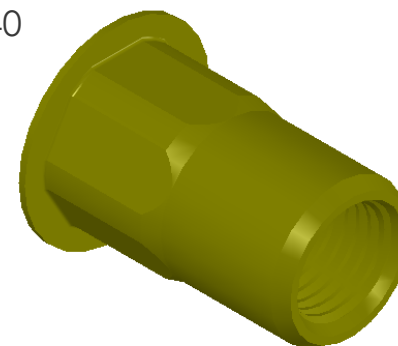
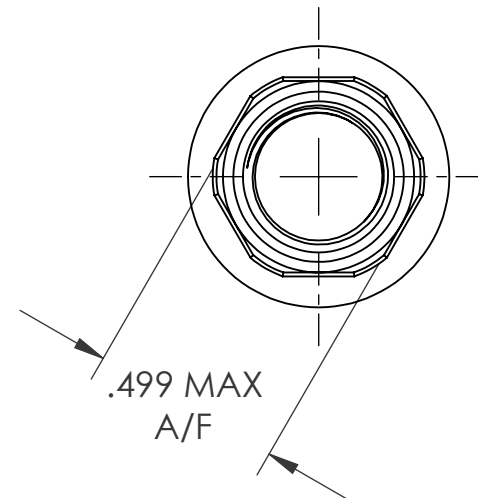


REVISIONS			
REV.	DESCRIPTION	DATE	ECN
A	INITIAL RELEASE	4/29/05	
B	NEW FINISH PER SFS-01-001, SC2	1/21/15	1745



3/8-24 UNF 2B
PER ASME B1.1
MINOR DIA.: .330 - .340


SECTION A-A



NOTE:

1. GRIP RANGE: .150 - .312
2. HOLE SIZE: .500 +.004/-.000 A/F AFTER ALL APPLIED FINISHES.
3. INSTALLED LENGTH: .515 MAX.
4. LUBRICATION: WAX
5. INSTALLATION TOOL: SSG-803 SPIN SPIN

PROPRIETARY AND CONFIDENTIAL
THIS DRAWING, AND THE INFORMATION CONTAINED HEREIN, ARE THE PROPERTY OF SHEREX, AND ARE NOT TO BE USED IN ANY MANNER DETRIMENT TO THE INTEREST OF THE COMPANY.
SHEREX SOLUTIONS RESERVES THE RIGHT TO REVISE PART/DRAWING WITHOUT NOTICE.

		UNLESS OTHERWISE SPECIFIED:		NAME	DATE		
		DIMENSIONS ARE IN INCHES TOLERANCES: ANGULAR: MACH±1 BEND ±1 TWO PLACE DECIMAL ±.02 THREE PLACE DECIMAL ±.010	DRAWN	TOO	4/29/05		
		INTERPRET GEOMETRIC TOLERANCING PER: ASME Y14.5M-1994	CHECKED			TITLE: LARGE FLANGE SEMI HEX OPEN END	
			ENG APPR.	TOO	4/29/05		
			MFG APPR.	AJP	4/29/05		
		MATERIAL	Q.A.			SIZE DWG. NO. A CAH2-3724-312	
		C1008/C1010	COMMENTS: E-mail: info@sherex.com www.sherex.com Phone: 866-474-3739 Fax: 716-875-0358				
		FINISH					
NEXT ASSY	USED ON	ZINC PLATE W/YELLOW TRIVALENT CHROMATE PER SFS-01-001, SC2				REV B	
APPLICATION		DO NOT SCALE DRAWING				SCALE: 2:1 WEIGHT:.0083 kg. SHEET 1 OF 1	