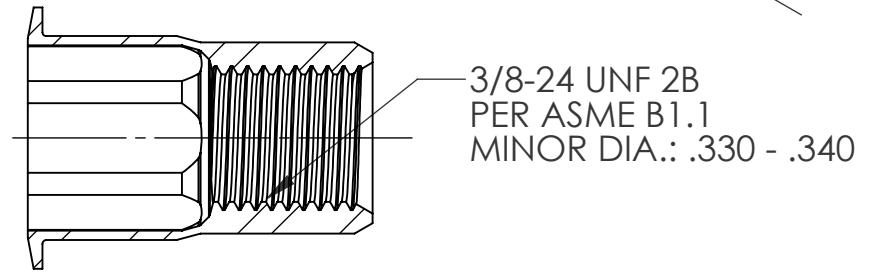
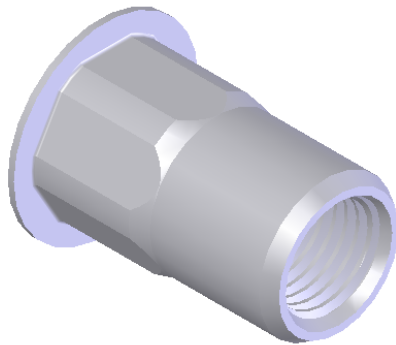
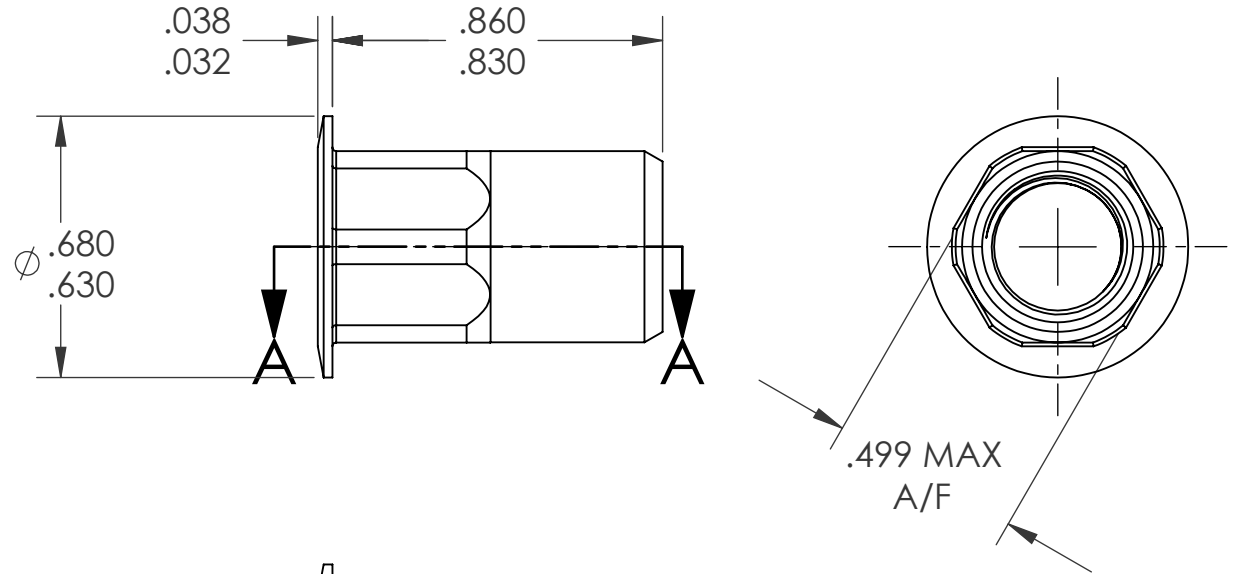


REVISIONS			
REV.	DESCRIPTION	DATE	ECN
A	INITIAL RELEASE	4/30/09	1174




SECTION A-A

NOTE:

1. GRIP RANGE: .150 - .312
2. HOLE SIZE: .500 +.004/-.000 A/F AFTER ALL APPLIED FINISHES.
3. INSTALLED LENGTH: .515 MAX.
4. LUBRICATION: WAX
5. INSTALLATION TOOL: SSG-803 SPIN SPIN

PROPRIETARY AND CONFIDENTIAL

THIS DRAWING, AND THE INFORMATION CONTAINED HEREIN, ARE THE PROPERTY OF SHEREX AND ARE NOT TO BE USED IN ANY MANNER DETRIMENTAL TO THE INTEREST OF THE COMPANY.
SHEREX SOLUTIONS RESERVES THE RIGHT TO REVISE PART/DRAWING WITHOUT NOTICE.

		UNLESS OTHERWISE SPECIFIED:		NAME	DATE	
		DIMENSIONS ARE IN INCHES TOLERANCES: ANGULAR: MACH ± 1 BEND ± 1 TWO PLACE DECIMAL ± .02 THREE PLACE DECIMAL ± .010		DRAWN	TWR 4/30/09	
		INTERPRET GEOMETRIC TOLERANCING PER: ASME Y14.5M-1994		CHECKED		
		MATERIAL		ENG APPR.	JVK 4/30/09	
		5056 ALUMINUM		MFG APPR.		
		FINISH		Q.A.	JVK 4/30/09	TITLE:
NEXT ASSY	USED ON	NONE		COMMENTS:		LARGE FLANGE SEMI HEX OPEN END
APPLICATION		DO NOT SCALE DRAWING		E-mail: info@sherex.com www.sherex.com Phone: 866-474-3739 Fax: 716-875-0358		SIZE DWG. NO.
						A CAH3-3724-312
						REV
						A
						SCALE: 2:1 WEIGHT: kg. SHEET 1 OF 1