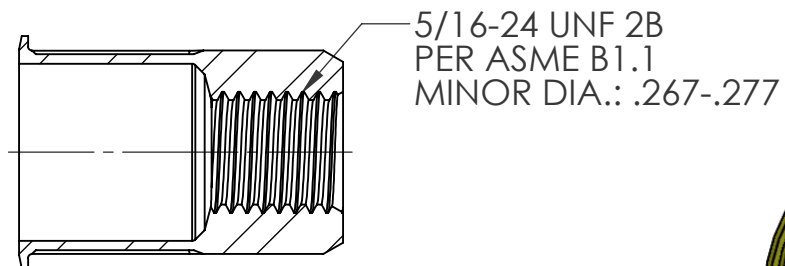
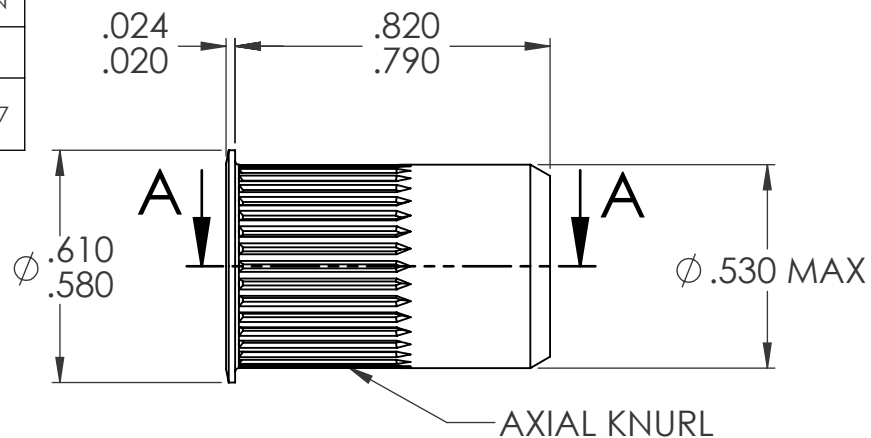
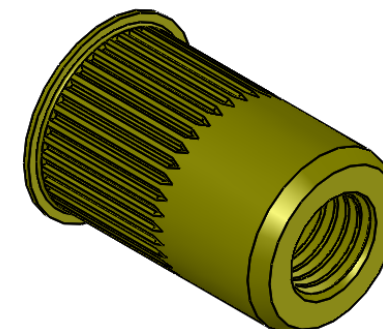


REVISIONS			
REV.	DESCRIPTION	DATE	ECN
A	INITIAL RELEASE	5/23/05	
B	NEW FINISH PER SFS-01-001, SC2	1/16/15	1737



SECTION A-A



NOTE:

- GRIP RANGE: .150 - .312
- HOLE SIZE: .531 +.006/- .000 AFTER ALL APPLIED FINISHES.
- INSTALLED LENGTH: .425 MAX.
- LUBRICATION: WAX
- INSTALLATION TOOL: SSG 803 SPIN SPIN

PROPRIETARY AND CONFIDENTIAL
THIS DRAWING, AND THE INFORMATION CONTAINED HEREIN, ARE THE PROPERTY OF SHEREX AND ARE NOT TO BE USED IN ANY MANNER DETRIMENT TO THE INTEREST OF THE COMPANY.

SHEREX RESERVES THE RIGHT TO REVISE PART/DRAWING WITHOUT NOTICE.

		UNLESS OTHERWISE SPECIFIED:		NAME	DATE
		DIMENSIONS ARE IN INCHES TOLERANCES:	DRAWN	TOO	5/23/05
		ANGULAR: MACH ±1 BEND ±1 TWO PLACE DECIMAL ±.01 THREE PLACE DECIMAL ±.005	CHECKED		
			ENG APPR.	TOO	5/23/05
			MFG APPR.	AJP	5/23/05
		INTERPRET GEOMETRIC TOLERANCING PER: ASME Y14.5M-1994	Q.A.		
		MATERIAL C1008/C1010	COMMENTS: E-mail: info@sherex.com www.sherex.com Phone: 866-474-3739 Fax: 716-875-0358		
NEXT ASSY	USED ON	FINISH ZINC PLATE W/YELLOW TRIVALENT CHROMATE PER SFS-01-001, SC2			
APPLICATION		DO NOT SCALE DRAWING			



TITLE:

SMALL FLANGE OPEN END

SIZE A	DWG. NO. CAK2-3124-312	REV B
SCALE: 2:1	WEIGHT: .0102 kg	SHEET 1 OF 1