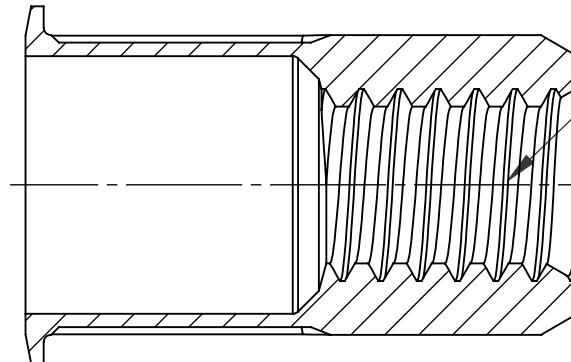
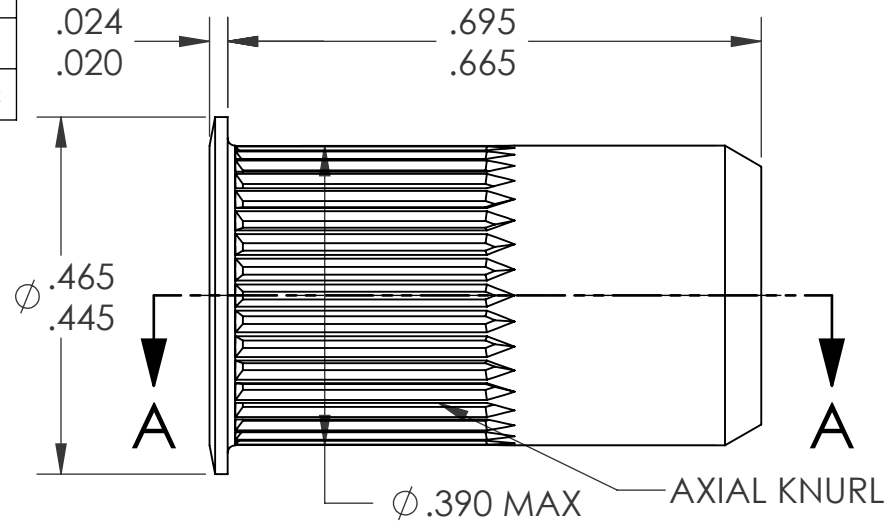


REVISIONS			
REV.	DESCRIPTION	DATE	ECN
A	INITIAL RELEASE	4/24/09	1172



SECTION A-A


1/4-20 UNC 2B
PER ASME B1.1
MINOR DIA.: .196 - .207



NOTE:

1. GRIP RANGE: .165 - .260
2. HOLE SIZE: .391 +.006/-.000 AFTER ALL APPLIED FINISHES.
3. INSTALLED LENGTH: .380 MAX.
4. LUBRICATION: WAX
5. INSTALLATION TOOL: SSG 802 SPIN SPIN

PROPRIETARY AND CONFIDENTIAL
THIS DRAWING, AND THE INFORMATION CONTAINED HEREIN, ARE THE PROPERTY OF SHEREX, AND ARE NOT TO BE USED IN ANY MANNER DETRIMENTAL TO THE INTEREST OF THE COMPANY.
SHEREX SOLUTIONS RESERVES THE RIGHT TO REVISE PART/DRAWING WITHOUT NOTICE.

		UNLESS OTHERWISE SPECIFIED:		NAME	DATE	
		DIMENSIONS ARE IN INCHES TOLERANCES: ANGULAR: MACH ± 1 BEND ± 1 TWO PLACE DECIMAL ± .01 THREE PLACE DECIMAL ± .002		DRAWN	TWR	4/24/09
		INTERPRET GEOMETRIC TOLERANCING PER: ASME Y14.5M-1994		CHECKED		
		MATERIAL 5056 ALUMINUM		ENG APPR.	JVK	4/24/09
		FINISH NONE		MFG APPR.		
NEXT ASSY		USED ON		Q.A.	JVK	4/24/09
APPLICATION		DO NOT SCALE DRAWING		COMMENTS: E-mail: info@sherex.com www.sherex.com Phone: 866-474-3739 Fax: 716-875-0358		TITLE: SMALL FLANGE OPEN END
				SIZE	DWG. NO.	REV
				A	CAK3-2520-260	A
				SCALE: 2:1	WEIGHT: kg	SHEET 1 OF 1