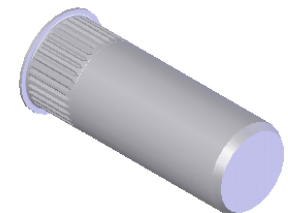



SECTION A-A

NOTE:

1. GRIP RANGE: .150 - .312
2. HOLE SIZE: .531 +.006/-.000 AFTER ALL APPLIED FINISHES.
3. INSTALLED LENGTH: 1.025 MAX.
4. LUBRICATION: WAX
5. INSTALLATION TOOL: SSG 803 SPIN SPIN



PROPRIETARY AND CONFIDENTIAL
THIS DRAWING, AND THE INFORMATION CONTAINED HEREIN, ARE THE PROPERTY OF SHEREX AND ARE NOT TO BE USED IN ANY MANNER DETRIMENTAL TO THE INTEREST OF THE COMPANY.
SHEREX SOLUTIONS RESERVES THE RIGHT TO REVISE PART/DRAWING WITHOUT NOTICE.

		UNLESS OTHERWISE SPECIFIED:		NAME	DATE				
		DIMENSIONS ARE IN INCHES TOLERANCES: ANGULAR: MACH ± 1 BEND ±1 TWO PLACE DECIMAL ±.01 THREE PLACE DECIMAL ±.002	DRAWN	TOO	5/23/05				
			CHECKED						
		INTERPRET GEOMETRIC TOLERANCING PER: ASME Y14.5M-1994	ENG APPR.	TOO	5/23/05	TITLE: SMALL FLANGE CLOSED END			
			MFG APPR.	AJP	5/23/05				
		MATERIAL	Q.A.						
		A5056	COMMENTS:			SIZE DWG. NO. REV A CAK3-3118-312B A			
		FINISH	E-mail: info@sherex.com						
		NONE PER ASTM B633 Fe/Zn 8um TYPE II	www.sherex.com						
NEXT ASSY	USED ON		Phone: 866-474-3739			SCALE: 2:1 WEIGHT: .0087 kg SHEET 1 OF 1			
			Fax: 716-875-0358						
APPLICATION		DO NOT SCALE DRAWING							