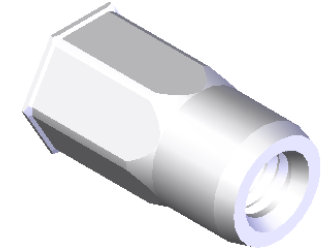


SECTION A-A

M6X1.0 6H
PER ASME B1.13M
MINOR DIA.: 4.92 - 5.15



NOTE:

1. GRIP RANGE: 5.0 - 7.0
2. HOLE SIZE: 9.0 +0.1/0.0 A/F AFTER ALL APPLIED FINISHES.
3. INSTALLED LENGTH: N/A
4. INSTALLED THREAD DEPTH:
5. LUBRICATION: NONE
6. INSTALLATION TOOL: MS 50 SPIN PULL

PROPRIETARY AND CONFIDENTIAL
THIS DRAWING, AND THE INFORMATION CONTAINED HEREIN, ARE THE PROPERTY OF SHEREX AND ARE NOT TO BE USED IN ANY MANNER DETRIMENTAL TO THE INTEREST OF THE COMPANY.
SHEREX SOLUTIONS RESERVES THE RIGHT TO REVISE PART/DRAWING WITHOUT NOTICE.

		UNLESS OTHERWISE SPECIFIED:		NAME	DATE	
		DIMENSIONS ARE IN MILLIMETERS TOLERANCES: ANGULAR: MACH ± 1 BEND ± 1 ONE PLACE DECIMAL ± 0.10 TWO PLACE DECIMAL ± 0.05		DRAWN	JVK	
		INTERPRET GEOMETRIC TOLERANCING PER: ASME Y14.5M-1994		CHECKED		
		MATERIAL		ENG APPR.	JVK	3/24/08
		304 STAINLESS		MFG APPR.	TB	8/25/08
		FINISH		Q.A.		
		PASSIVATE		COMMENTS:		TITLE: LOW PROFILE HEAD SEMI HEX
NEXT ASSY	USED ON			E-mail: info@sherex.com www.sherex.com Phone: 866-474-3739 Fax: 716-875-0358		
APPLICATION		DO NOT SCALE DRAWING		SIZE DWG. NO.		REV
				A TU-SSM6HUKO70		A
				SCALE: 2:1		WEIGHT:..0039 kg
						SHEET 1 OF 1