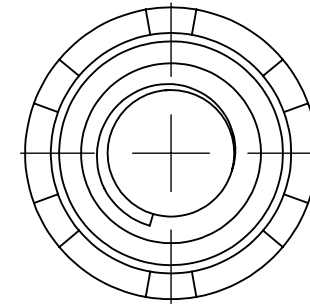
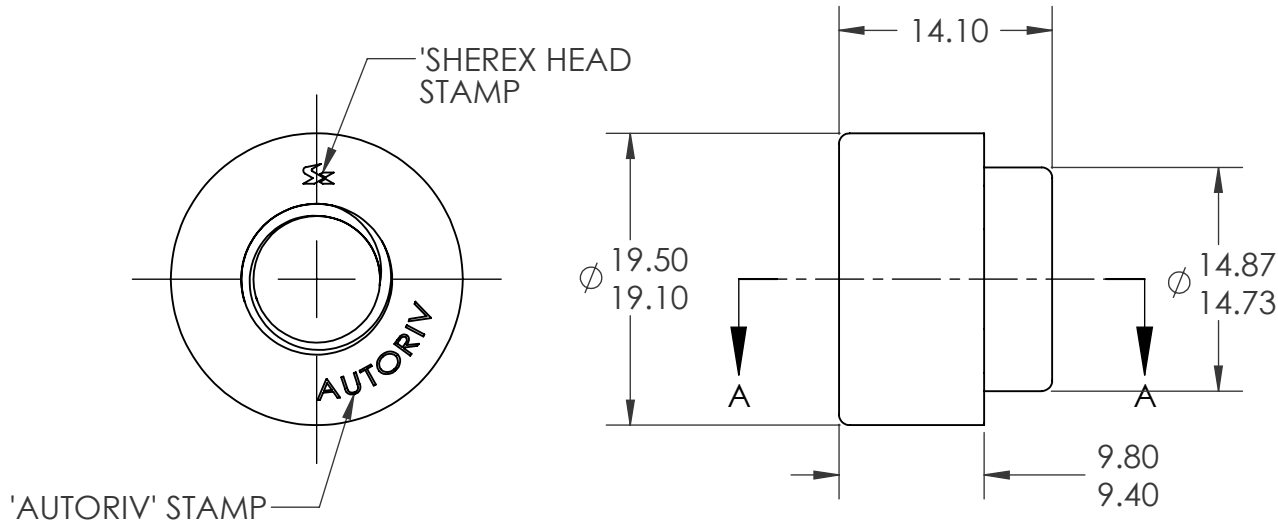
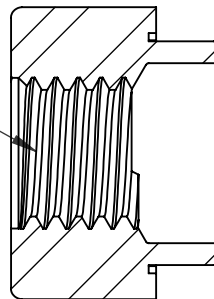


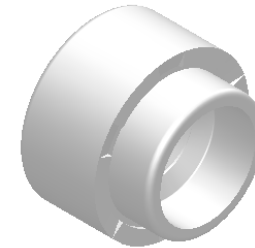
REVISIONS			
REV.	DESCRIPTION	DATE	ECN
A	INITIAL RELEASE	12/15/10	1378



M10X1.5 6H
PER ASME B1.13M
MINOR DIA.: 8.38 - 8.68



SECTION A-A
SCALE 2 : 1



- NOTE:
1. SHEET THICKNESS: 1.0 - 6.0
 2. HOLE SIZE: 15.00 +.00/- .10 AFTER ALL APPLIED FINISHES

PROPRIETARY AND CONFIDENTIAL
THIS DRAWING, AND THE INFORMATION CONTAINED HEREIN, ARE THE PROPERTY OF SHEREX AND ARE NOT TO BE USED IN ANY MANNER DETRIMENTAL TO THE INTEREST OF THE COMPANY.
SHEREX SOLUTIONS RESERVES THE RIGHT TO REVISE PART/DRAWING WITHOUT NOTICE.

UNLESS OTHERWISE SPECIFIED:		NAME	DATE
DIMENSIONS ARE IN MILLIMETERS TOLERANCES: ANGULAR: MACH ± 1 BEND ± 1 ONE PLACE DECIMAL ± 0.10 TWO PLACE DECIMAL ± 0.05		DRAWN CL	12/2/10
INTERPRET GEOMETRIC TOLERANCING PER: ASME Y14.5M-1994		CHECKED	
MATERIAL C1035/C1040		ENG APPR. JVK	12/2/10
FINISH PLAIN ZINC, 3um MIN.		MFG APPR.	
NEXT ASSY	USED ON	Q.A. JVK	12/2/10
APPLICATION DO NOT SCALE DRAWING		COMMENTS: E-mail: info@sherex.com www.sherex.com Phone: 866-474-3739 Fax: 716-875-0358	



TITLE:
ARN CLINCH NUT

SIZE DWG. NO. REV
A ARN2-1015-6.0 A

SCALE: 2:1 WEIGHT: SHEET 1 OF 1