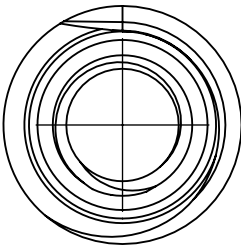
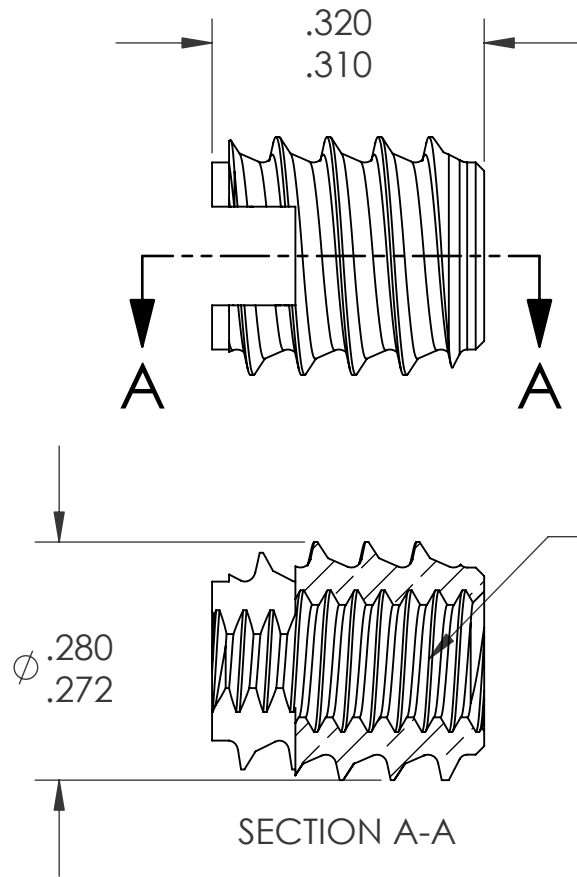


REVISIONS			
REV.	DESCRIPTION	DATE	ECN
A	INITIAL RELEASE	12/31/08	1131



#8-32 UNC 2B  
PER ASME B1.1  
MINOR DIA.: .130 - .139



NOTES:

- 1. REFER TO CATALOG FOR RECOMMENDED BOSS DIMENSIONS

**PROPRIETARY AND CONFIDENTIAL**  
THIS DRAWING, AND THE INFORMATION CONTAINED HERIN, ARE THE PROPERTY OF SHEREX AND ARE NOT TO BE USED IN ANY MANNER DETRIMENT TO THE INTEREST OF THE COMPANY.  
  
SHEREX RESERVES THE RIGHT TO REVISE PART/DRAWING WITHOUT NOTICE.

		UNLESS OTHERWISE SPECIFIED:		NAME	DATE	
		DIMENSIONS ARE IN INCHES		DRAWN	JVK	12/9/08
		TOLERANCES:		CHECKED		
		ANGULAR: MACH ±1 BEND ±1		ENG APPR.	JVK	12/9/08
		TWO PLACE DECIMAL ±.01		MFG APPR.	TB	12/30/08
		THREE PLACE DECIMAL ±.005		Q.A.		
		INTERPRET GEOMETRIC TOLERANCING PER: ASME Y14.5M-1994		COMMENTS:		
		MATERIAL		E-mail: info@sherex.com		
		BRASS C3604		www.sherex.com		
		FINISH		Phone: 866-474-3739		
		NONE		Fax: 716-875-0358		
NEXT ASSY	USED ON	APPLICATION		SCALE: 4.5:1		
		DO NOT SCALE DRAWING		WEIGHT:		



TITLE:  
**#8-32 THREADSERT**

SIZE	DWG. NO.	REV
<b>A</b>	<b>B1T-0832-315</b>	<b>A</b>

SHEET 1 OF 1