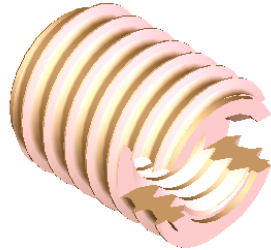
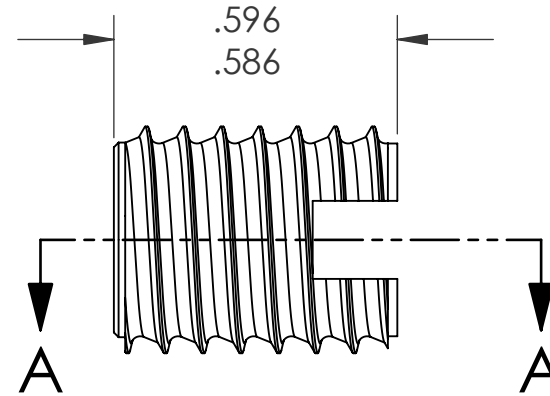
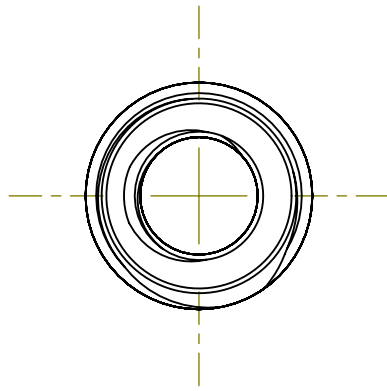
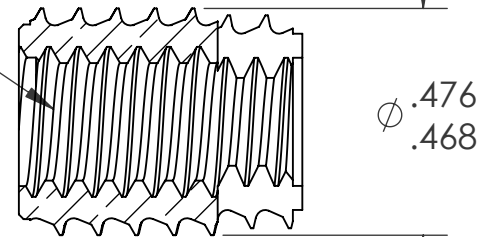


REVISIONS			
REV.	DESCRIPTION	DATE	ECN
A	INITIAL RELEASE	12/31/08	1131



5/16-18 UNC 2B
PER ASME B1.1
MINOR DIA: .252 - .265



SECTION A-A

NOTES:

- REFER TO CATALOG FOR RECOMMENDED BOSS DIMENSIONS

PROPRIETARY AND CONFIDENTIAL

THIS DRAWING, AND THE INFORMATION CONTAINED HEREIN, ARE THE PROPERTY OF SHEREX AND ARE NOT TO BE USED IN ANY MANNER DETRIMENTAL TO THE INTEREST OF THE COMPANY.

SHEREX RESERVES THE RIGHT TO REVISE PART/DRAWING WITHOUT NOTICE.

		UNLESS OTHERWISE SPECIFIED: DIMENSIONS ARE IN INCHES TOLERANCES: ANGULAR: MACH ±1 BEND ±1 TWO PLACE DECIMAL ±.01 THREE PLACE DECIMAL ±.005		NAME	DATE
		INTERPRET GEOMETRIC TOLERANCING PER: ASME Y14.5M-1994		JVK	12/9/08
		MATERIAL BRASS C3604		JVK	12/9/08
		FINISH NONE		TB	12/30/08
				Q.A.	
				COMMENTS: E-mail: info@sherex.com www.sherex.com Phone: 866-474-3739 Fax: 716-875-0358	
NEXT ASSY	USED ON				
APPLICATION		DO NOT SCALE DRAWING			



TITLE:

5/16-18 THREADSERT

SIZE A	DWG. NO. B1T-3118-591	REV A
------------------	--------------------------	----------

SCALE: 2.5; WEIGHT: kg SHEET 1 OF 1