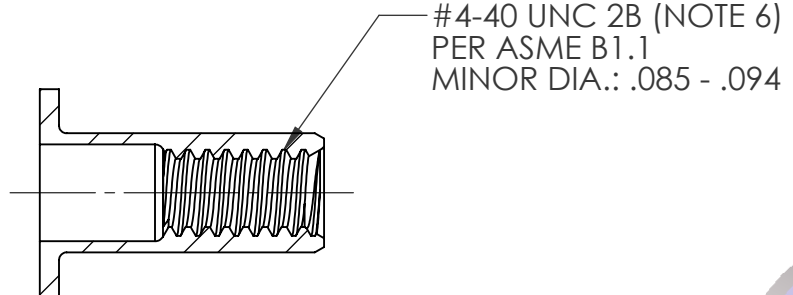
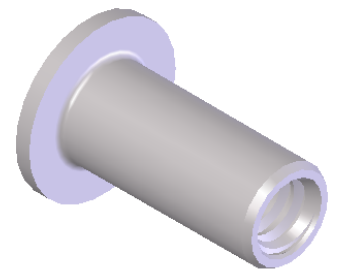


REVISIONS			
REV.	DESCRIPTION	DATE	ECN
A	THREAD TOLERANCES CHANGED	5/21/09	1186
B	UPDATE TO CURRENT FORMAT	6/2/10	1316
C	NEW FINISH PER SFS-01-001	3/6/15	1796




SECTION A-A



- NOTE:
- GRIP RANGE: .010 - .060
  - HOLE SIZE: .156 +.002/-.000 AFTER ALL APPLIED FINISHES.
  - INSTALLED LENGTH: .230 REF.
  - LUBRICATION: NONE
  - INSTALLATION TOOL: SPIN-PULL
  - MAY BE PRODUCED TO 3B THREAD CLASS DEPENDING ON THE MANUFACTURING LOT NUMBER OR CUSTOMER REQUIREMENT. SPECIFIC CLASS AVAILABLE UPON REQUEST.

**PROPRIETARY AND CONFIDENTIAL**  
 THIS DRAWING, AND THE INFORMATION CONTAINED HERIN, ARE THE PROPERTY OF SHEREX AND ARE NOT TO BE USED IN ANY MANNER DETRIMENT TO THE INTEREST OF THE COMPANY.  
 SHEREX RESERVES THE RIGHT TO REVISE PART/DRAWING WITHOUT NOTICE.

		UNLESS OTHERWISE SPECIFIED: DIMENSIONS ARE IN INCHES TOLERANCES: ANGULAR: MACH $\pm 1$ BEND $\pm 1$ TWO PLACE DECIMAL $\pm .01$ THREE PLACE DECIMAL $\pm .005$ INTERPRET GEOMETRIC TOLERANCING PER: ASME Y14.5M-1994		NAME	DATE
		MATERIAL C1008/C1010/C1110		TOO	12/7/05
		FINISH ZINC PLATE W/YELLOW TRIVALENT CHROMATE PER SFS-01-001		AJP	12/7/05
NEXT ASSY	USED ON				
APPLICATION		DO NOT SCALE DRAWING			
			COMMENTS: E-mail: info@sherex.com www.sherex.com Phone: 866-474-3739 Fax: 716-875-0358		



TITLE:  
**FLAT HEAD OPEN END**

SIZE <b>A</b>	DWG. NO. CA-0440S-060	REV C
SCALE: 4:1	WEIGHT: .0006 kg	SHEET 1 OF 1