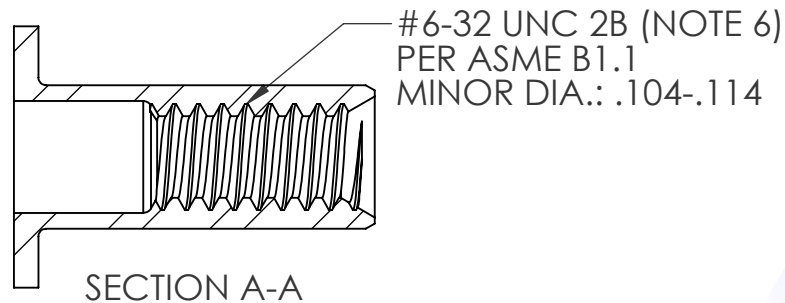
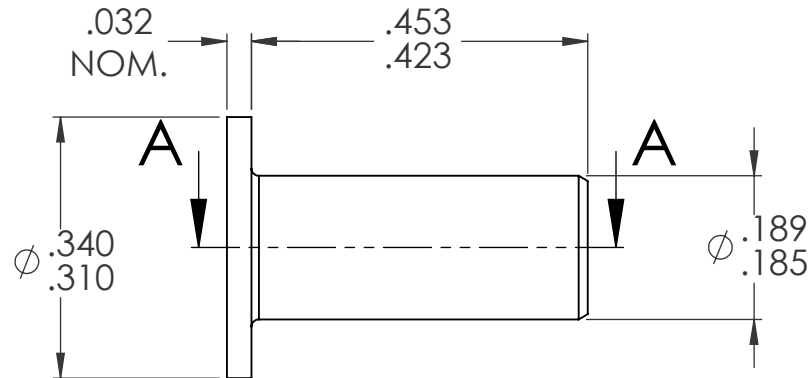
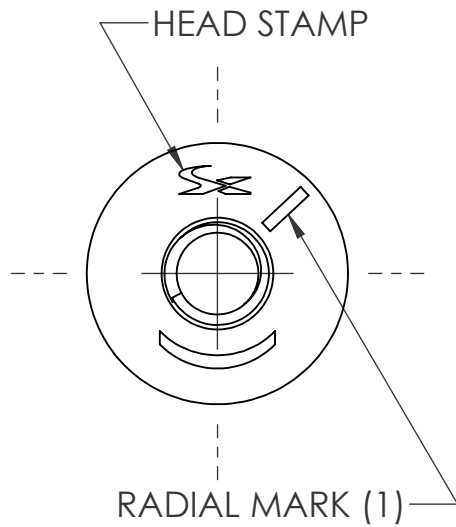


REVISIONS			
REV.	DESCRIPTION	DATE	ECN
A	TOLERANCE CHANGE	5/21/09	1186
B	UPDATE BODY LENGTH	11/12/09	1237
C	UPDATE TO CURRENT FORMAT	6/21/10	1316
D	NEW FINISH PER SFS-01-001	1/23/15	1749



- NOTE:
- GRIP RANGE: .010 - .075
 - HOLE SIZE: .190 +.003/-.000 AFTER ALL APPLIED FINISHES.
 - INSTALLED LENGTH: .300 REF.
 - LUBRICATION: NONE
 - INSTALLATION TOOL: SPIN-PULL
 - MAY BE PRODUCED TO 3B THREAD CLASS DEPENDING ON THE MANUFACTURING LOT NUMBER OR CUSTOMER REQUIREMENT. SPECIFIC CLASS AVAILABLE UPON REQUEST.

PROPRIETARY AND CONFIDENTIAL
THIS DRAWING, AND THE INFORMATION CONTAINED HEREIN, ARE THE PROPERTY OF SHEREX AND ARE NOT TO BE USED IN ANY MANNER DETRIMENTAL TO THE INTEREST OF THE COMPANY.
SHEREX RESERVES THE RIGHT TO REVISE PART/DRAWING WITHOUT NOTICE.

		UNLESS OTHERWISE SPECIFIED: DIMENSIONS ARE IN INCHES TOLERANCES: ANGULAR: MACH ±1 BEND ±1 TWO PLACE DECIMAL ±.01 THREE PLACE DECIMAL ±.005 INTERPRET GEOMETRIC TOLERANCING PER: ASME Y14.5M-1994 MATERIAL C1008/C1010/C1110 FINISH ZINC PLATE W/CLEAR TRIVALENT CHROMATE PER SFS-01-001			NAME TOO	DATE 12/7/05
					CHECKED	
					ENG APPR.	TOO 12/7/05
					MFG APPR.	AJP 12/7/05
					Q.A.	
					COMMENTS: E-mail: info@sherex.com www.sherex.com Phone: 866-474-3739 Fax: 716-875-0358	
NEXT ASSY	USED ON					
APPLICATION		DO NOT SCALE DRAWING				



TITLE:
FLAT HEAD OPEN END

SIZE A	DWG. NO. CA-0632S-075	REV D
------------------	--------------------------	----------

SCALE: 4:1 WEIGHT: .0011 kg SHEET 1 OF 1