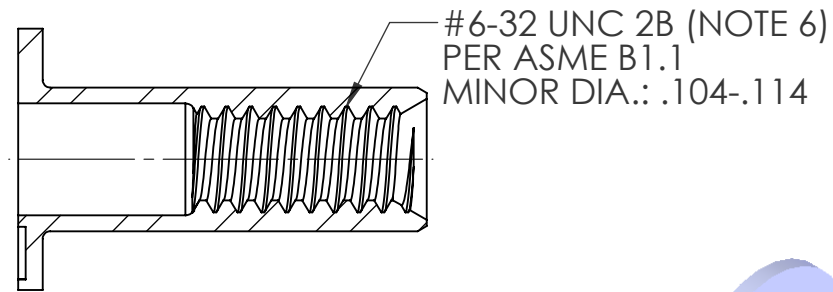
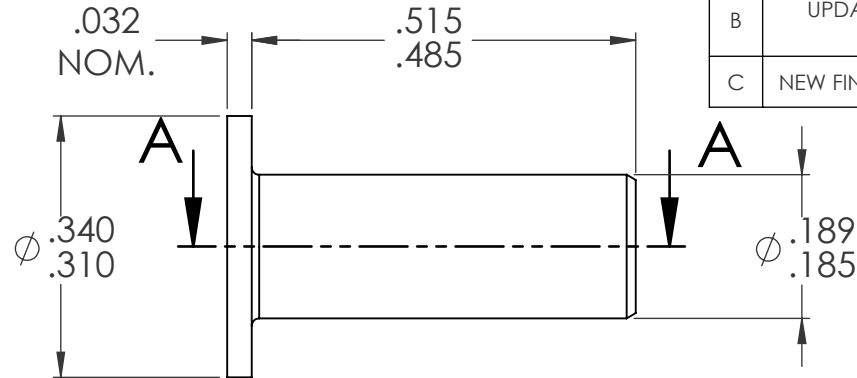
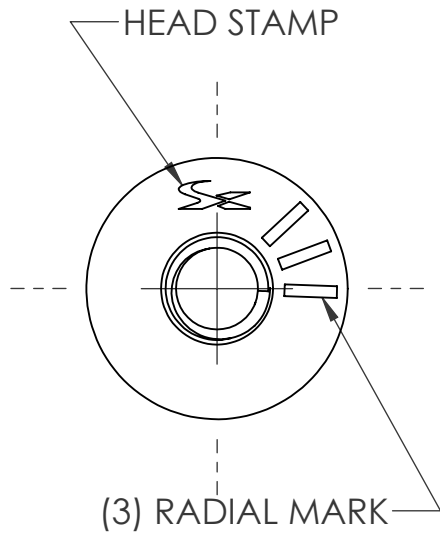
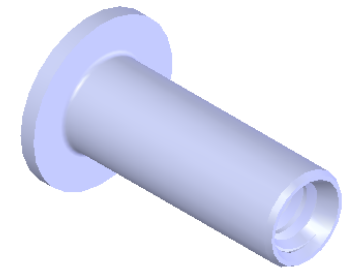


REVISIONS			
REV.	DESCRIPTION	DATE	ECN
A	TOLERANCE CHANGE	5/21/09	1186
B	UPDATE TO CURRENT FORMAT	6/2/10	1316
C	NEW FINISH PER SFS-01-001	1/23/15	1749



SECTION A-A



- NOTE:
1. GRIP RANGE: .075 - .120
 2. HOLE SIZE: .190 +.003/-0.000 AFTER ALL APPLIED FINISHES.
 3. INSTALLED LENGTH: .315 REF.
 4. LUBRICATION: NONE
 5. INSTALLATION TOOL: SPIN-PULL
 6. MAY BE PRODUCED TO 3B THREAD CLASS DEPENDING ON THE MANUFACTURING LOT NUMBER OR CUSTOMER REQUIREMENT. SPECIFIC CLASS AVAILABLE UPON REQUEST.

PROPRIETARY AND CONFIDENTIAL
THIS DRAWING, AND THE INFORMATION CONTAINED HEREIN, ARE THE PROPERTY OF SHEREX AND ARE NOT TO BE USED IN ANY MANNER DETRIMENTAL TO THE INTEREST OF THE COMPANY.

SHEREX RESERVES THE RIGHT TO REVISE PART/DRAWING WITHOUT NOTICE.

		UNLESS OTHERWISE SPECIFIED:					
		DIMENSIONS ARE IN INCHES TOLERANCES:		DRAWN		NAME TOO	
		ANGULAR: MACH ±1 BEND ±1 TWO PLACE DECIMAL ±.01 THREE PLACE DECIMAL ±.005		CHECKED		DATE 12/7/05	
		INTERPRET GEOMETRIC TOLERANCING PER: ASME Y14.5M-1994		ENG APPR.		TOO	
		MATERIAL C1008/C1010/C1110		MFG APPR.		AJP	
		FINISH ZINC PLATE W/CLEAR TRIVALENT CHROMATE PER SFS-01-001		Q.A.			
NEXT ASSY		USED ON		COMMENTS:			
		APPLICATION		E-mail: info@sherex.com www.sherex.com Phone: 866-474-3739 Fax: 716-875-0358			
		DO NOT SCALE DRAWING					



TITLE:
FLAT HEAD OPEN END

SIZE A	DWG. NO. CA-0632S-120	REV C
------------------	--------------------------	----------

SCALE: 4:1 WEIGHT: .0012 kg SHEET 1 OF 1