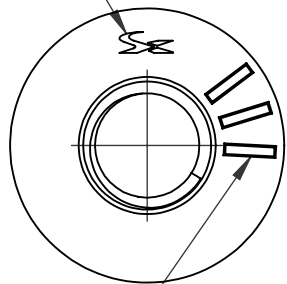
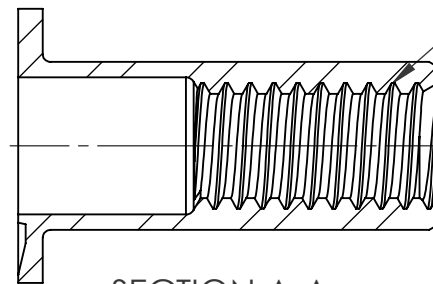
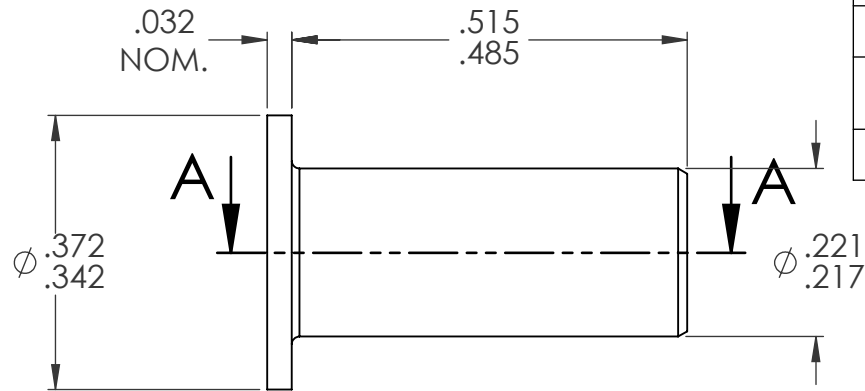


REVISIONS			
REV.	DESCRIPTION	DATE	ECN
A	TOLERANCE CHANGE	5/21/09	1186
B	UPDATE TO CURRENT FORMAT	6/2/10	1316
C	NEW FINISH PER SFS-01-001	1/23/15	1749

HEAD STAMP

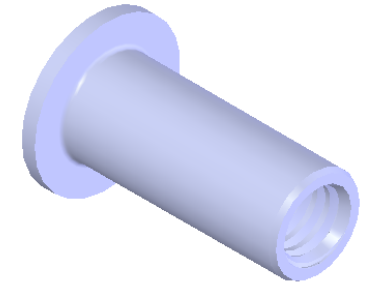


(3) RADIAL MARK



SECTION A-A

#8-32 UNC 2B
PER ASME B1.1
MINOR DIA.: .130-.139
(NOTE 6)



NOTE:

1. GRIP RANGE: .075 - .120
2. HOLE SIZE: .221 +.005/-0.000 AFTER ALL APPLIED FINISHES.
3. INSTALLED LENGTH: .315 REF.
4. LUBRICATION: NONE
5. INSTALLATION TOOL: SPIN-PULL
6. MAY BE PRODUCED TO 3B THREAD CLASS DEPENDING ON THE MANUFACTURING LOT NUMBER OR CUSTOMER REQUIREMENT. SPECIFIC CLASS AVAILABLE UPON REQUEST.

PROPRIETARY AND CONFIDENTIAL

THIS DRAWING, AND THE INFORMATION CONTAINED HEREIN, ARE THE PROPERTY OF SHEREX AND ARE NOT TO BE USED IN ANY MANNER DETRIMENTAL TO THE INTEREST OF THE COMPANY.

SHEREX RESERVES THE RIGHT TO REVISE PART/DRAWING WITHOUT NOTICE.

		UNLESS OTHERWISE SPECIFIED: DIMENSIONS ARE IN INCHES TOLERANCES: ANGULAR: MACH ±1 BEND ±1 TWO PLACE DECIMAL ±.01 THREE PLACE DECIMAL ±.005 INTERPRET GEOMETRIC TOLERANCING PER: ASME Y14.5M-1994 MATERIAL C1008/C1010/C1110 FINISH ZINC PLATE W/CLEAR TRIVALENT CHROMATE PER SFS-01-001		NAME	DATE
			DRAWN	TOO	12/7/05
			CHECKED		
			ENG APPR.	TOO	12/7/05
			MFG APPR.	AJP	12/7/05
			Q.A.		
			COMMENTS: E-mail: info@sherex.com www.sherex.com Phone: 866-474-3739 Fax: 716-875-0358		
NEXT ASSY	USED ON				
APPLICATION		DO NOT SCALE DRAWING			



TITLE:

FLAT HEAD OPEN END

SIZE A	DWG. NO. CA-0832S-120	REV C
------------------	--------------------------	----------

SCALE: 4:1 WEIGHT: .0015 kg SHEET 1 OF 1