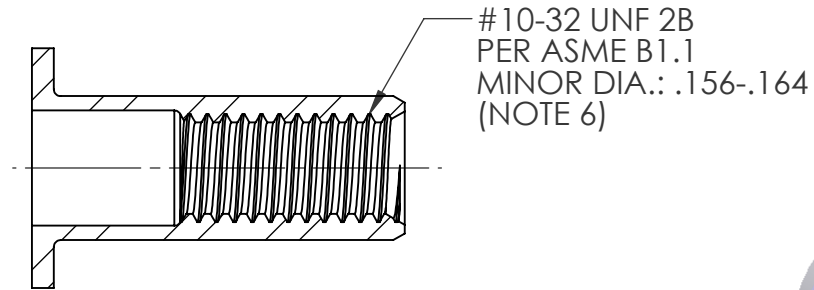
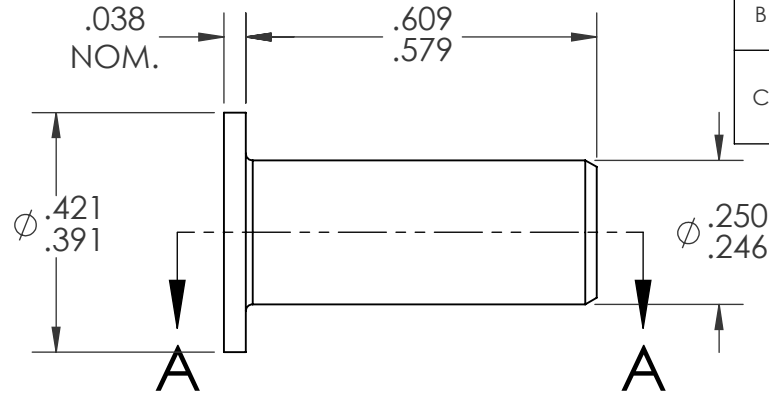
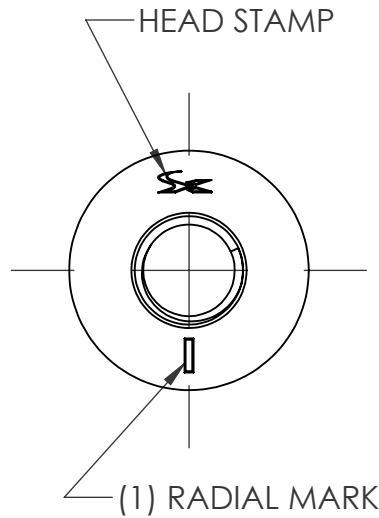
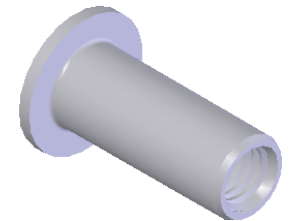


REVISIONS			
REV.	DESCRIPTION	DATE	ECN
A	TOLERANCE CHANGE	5/22/09	1186
B	UPDATE TO CURRENT FORMAT	6/2/10	1316
C	NEW FINISH PER SFS-01-001, ADDED MISSING RADIAL MARK	1/23/15	1749



SECTION A-A




NOTE:

- GRIP RANGE: .080 - .130
- HOLE SIZE: .250 +.006/-.000 AFTER ALL APPLIED FINISHES.
- INSTALLED LENGTH: .390 REF.
- LUBRICATION: NONE
- INSTALLATION TOOL: SPIN-PULL
- MAY BE PRODUCED TO 3B THREAD CLASS DEPENDING ON THE MANUFACTURING LOT NUMBER OR CUSTOMER REQUIREMENT. SPECIFIC CLASS AVAILABLE UPON REQUEST.

**PROPRIETARY AND CONFIDENTIAL**  
THIS DRAWING, AND THE INFORMATION CONTAINED HEREIN, ARE THE PROPERTY OF SHEREX AND ARE NOT TO BE USED IN ANY MANNER DETRIMENTAL TO THE INTEREST OF THE COMPANY.  
SHEREX RESERVES THE RIGHT TO REVISE PART/DRAWING WITHOUT NOTICE.

		UNLESS OTHERWISE SPECIFIED: DIMENSIONS ARE IN INCHES TOLERANCES: ANGULAR: MACH $\pm 1$ BEND $\pm 1$ TWO PLACE DECIMAL $\pm .01$ THREE PLACE DECIMAL $\pm .005$ INTERPRET GEOMETRIC TOLERANCING PER: ASME Y14.5M-1994	NAME	DATE
			DRAWN	TOO 12/7/05
			CHECKED	
			ENG APPR.	TOO 12/7/05
			MFG APPR.	AJP 12/7/05
			Q.A.	
		MATERIAL C1008/C1010/C1110	COMMENTS: E-mail: info@sherex.com www.sherex.com Phone: 866-474-3739 Fax: 716-875-0358	
NEXT ASSY	USED ON	FINISH ZINC PLATE W/CLEAR TRIVALENT CHROMATE PER SFS-01-001		
APPLICATION		DO NOT SCALE DRAWING		

		
TITLE: FLAT HEAD OPEN END		
SIZE <b>A</b>	DWG. NO. CA-1032S-130	REV C
SCALE: 3:1	WEIGHT: .0024 kg	SHEET 1 OF 1