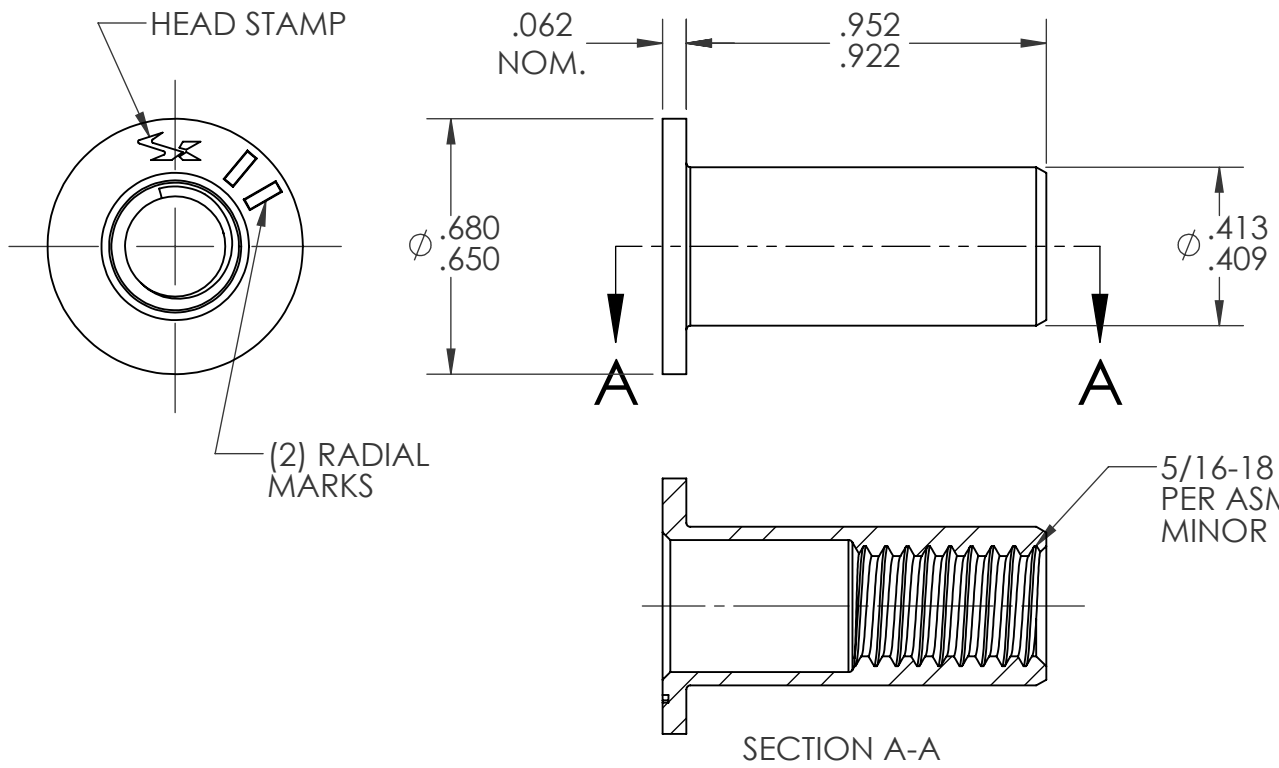


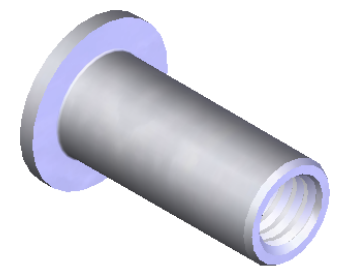
REVISIONS

REV.	DESCRIPTION	DATE	ECN
A	INITIAL RELEASE	8/11/03	
B	UPDATE TO CURRENT FORMAT	6/3/10	1316
C	NEW FINISH PER SFS-01-001	1/23/15	1749




NOTE:

- GRIP RANGE: .200 - .275
- HOLE SIZE: .413 +.010/-.000 AFTER ALL APPLIED FINISHES.
- INSTALLED LENGTH: .540 REF.
- LUBRICATION: NONE
- INSTALLATION TOOL: SPIN-PULL
- MAY BE PRODUCED TO 3B THREAD CLASS DEPENDING ON THE MANUFACTURING LOT NUMBER OR CUSTOMER REQUIREMENT. SPECIFIC CLASS AVAILABLE UPON REQUEST.



PROPRIETARY AND CONFIDENTIAL
 THIS DRAWING, AND THE INFORMATION CONTAINED HEREIN, ARE THE PROPERTY OF SHEREX AND ARE NOT TO BE USED IN ANY MANNER DETRIMENTAL TO THE INTEREST OF THE COMPANY.
 SHEREX RESERVES THE RIGHT TO REVISE PART/DRAWING WITHOUT NOTICE.

		UNLESS OTHERWISE SPECIFIED:		NAME	DATE
		DIMENSIONS ARE IN INCHES		DRAWN	JLA 8/11/03
		TOLERANCES:		CHECKED	
		ANGULAR: MACH ±1 BEND ±1		ENG APPR.	JLA 8/11/03
		TWO PLACE DECIMAL ±.01		MFG APPR.	AJP 8/11/03
		THREE PLACE DECIMAL ±.005		Q.A.	
		INTERPRET GEOMETRIC TOLERANCING PER: ASME Y14.5M-1994		COMMENTS:	
		MATERIAL		E-mail: info@sherex.com	
		C1008/C1010/C1110		www.sherex.com	
NEXT ASSY		USED ON		Phone: 866-474-3739	
				Fax: 716-875-0358	
APPLICATION		DO NOT SCALE DRAWING			

		
TITLE:		
FLAT HEAD OPEN END		
SIZE	DWG. NO.	REV
A	CA-3118S-275	C
SCALE: 2:1	WEIGHT: .0077 kg	SHEET 1 OF 1