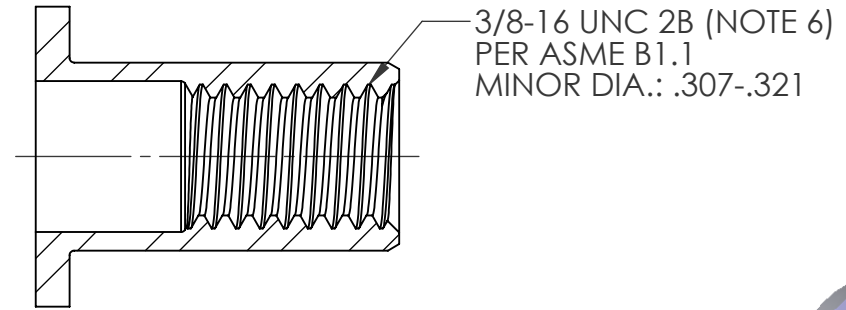
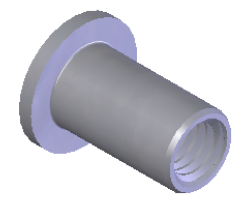


REVISIONS			
REV.	DESCRIPTION	DATE	ECN
A	INITIAL RELEASE	8/11/03	
B	UPDATE TO CURRENT FORMAT	6/3/10	1316
C	NEW FINISH PER SFS-01-001	1/23/15	1749




SECTION A-A



- NOTE:
- GRIP RANGE: .030 - .115
 - HOLE SIZE: .490 +.010/-.000 AFTER ALL APPLIED FINISHES.
 - INSTALLED LENGTH: .585 REF.
 - LUBRICATION: NONE
 - INSTALLATION TOOL: MS 100 SPIN PULL
 - MAY BE PRODUCED TO 3B THREAD CLASS DEPENDING ON THE MANUFACTURING LOT NUMBER OR CUSTOMER REQUIREMENT. SPECIFIC CLASS AVAILABLE UPON REQUEST.

PROPRIETARY AND CONFIDENTIAL
 THIS DRAWING, AND THE INFORMATION CONTAINED HERIN, ARE THE PROPERTY OF SHEREX AND ARE NOT TO BE USED IN ANY MANNER DETRIMENT TO THE INTEREST OF THE COMPANY.
 SHEREX RESERVES THE RIGHT TO REVISE PART/DRAWING WITHOUT NOTICE.

		UNLESS OTHERWISE SPECIFIED: DIMENSIONS ARE IN INCHES TOLERANCES: ANGULAR: MACH ±1 BEND ±1 TWO PLACE DECIMAL ±.01 THREE PLACE DECIMAL ±.005 INTERPRET GEOMETRIC TOLERANCING PER: ASME Y14.5M-1994 MATERIAL C1008/C1010/C1110 FINISH ZINC PLATE W/CLEAR TRIVALENT CHROMATE PER SFS-01-001		NAME	DATE
			DRAWN	TOO	8/11/03
			CHECKED		
			ENG APPR.	TOO	8/11/03
			MFG APPR.	AJP	8/11/03
			Q.A.		
			COMMENTS: E-mail: info@sherex.com www.sherex.com Phone: 866-474-3739 Fax: 716-875-0358		
NEXT ASSY	USED ON				
APPLICATION		DO NOT SCALE DRAWING			

 TITLE: FLAT HEAD OPEN END		
SCALE: 2:1	WEIGHT: .0139 kg	SHEET 1 OF 1