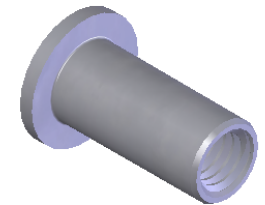
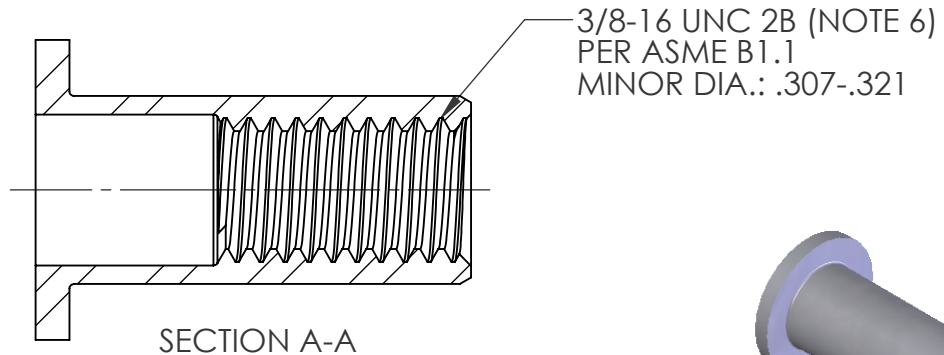
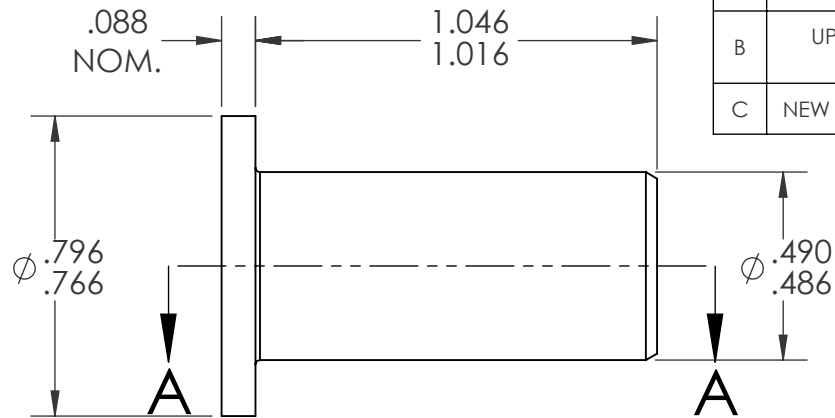
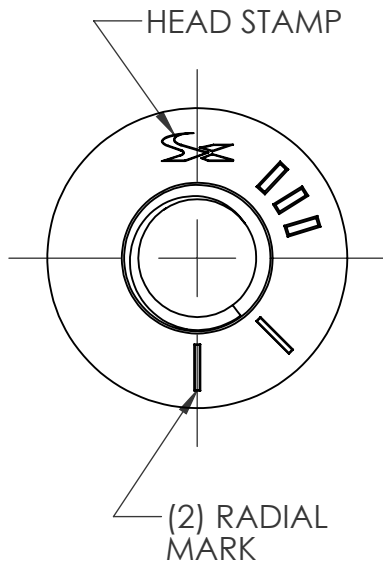



REVISIONS			
REV.	DESCRIPTION	DATE	ECN
A	INITIAL RELEASE	8/11/03	
B	UPDATE TO CURRENT FORMAT	6/3/10	1316
C	NEW FINISH PER SFS-01-001	1/23/15	1749



- NOTE:
- GRIP RANGE: .200 - .285
  - HOLE SIZE: .490 +.010/-.000 AFTER ALL APPLIED FINISHES.
  - INSTALLED LENGTH: .605 REF.
  - LUBRICATION: NONE
  - INSTALLATION TOOL: MS 100 SPIN PULL
  - MAY BE PRODUCED TO 3B THREAD CLASS DEPENDING ON THE MANUFACTURING LOT NUMBER OR CUSTOMER REQUIREMENT. SPECIFIC CLASS AVAILABLE UPON REQUEST.

**PROPRIETARY AND CONFIDENTIAL**  
THIS DRAWING, AND THE INFORMATION CONTAINED HEREIN, ARE THE PROPERTY OF SHEREX AND ARE NOT TO BE USED IN ANY MANNER DETRIMENTAL TO THE INTEREST OF THE COMPANY.  
SHEREX RESERVES THE RIGHT TO REVISE PART/DRAWING WITHOUT NOTICE.

		UNLESS OTHERWISE SPECIFIED: DIMENSIONS ARE IN INCHES TOLERANCES: ANGULAR: MACH $\pm 1$ BEND $\pm 1$ TWO PLACE DECIMAL $\pm .01$ THREE PLACE DECIMAL $\pm .005$ INTERPRET GEOMETRIC TOLERANCING PER: ASME Y14.5M-1994		NAME	DATE
		MATERIAL C1008/C1010/C1110		DRAWN	TOO 8/11/03
		FINISH ZINC PLATE W/CLEAR TRIVALENT CHROMATE PER SFS-01-001		CHECKED	
				ENG APPR.	TOO 8/11/03
				MFG APPR.	AJP 8/11/03
				Q.A.	
				COMMENTS: E-mail: info@sherex.com www.sherex.com Phone: 866-474-3739 Fax: 716-875-0358	
NEXT ASSY	USED ON				
APPLICATION		DO NOT SCALE DRAWING			

		
TITLE: FLAT HEAD OPEN END		
SIZE <b>A</b>	DWG. NO. CA-3716S-285	REV C
SCALE: 2:1	WEIGHT: .0159 kg	SHEET 1 OF 1