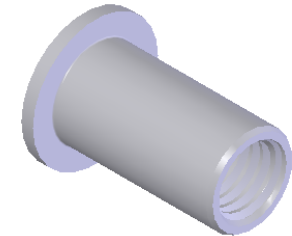
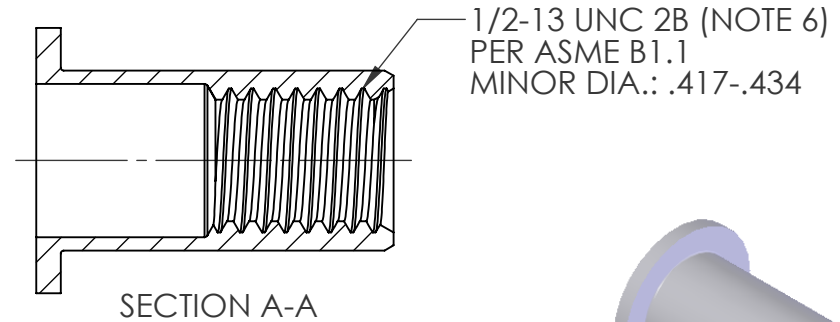
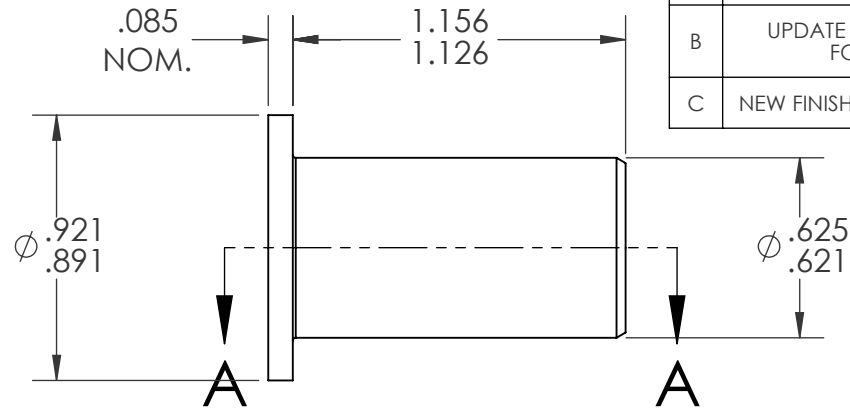
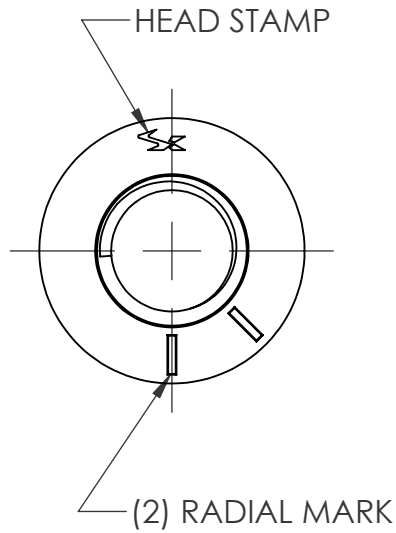


REVISIONS			
REV.	DESCRIPTION	DATE	ECN
A	INITIAL RELEASE	8/11/03	
B	UPDATE TO CURRENT FORMAT	6/3/10	1316
C	NEW FINISH PER SFS-01-001	1/23/15	1749



- NOTE:
- GRIP RANGE: .250 - .350
  - HOLE SIZE: .625 +.010/-.000 AFTER ALL APPLIED FINISHES.
  - INSTALLED LENGTH: .640 REF.
  - LUBRICATION: NONE
  - INSTALLATION TOOL: MS 100 SPIN PULL
  - MAY BE PRODUCED TO 3B THREAD CLASS DEPENDING ON THE MANUFACTURING LOT NUMBER OR CUSTOMER REQUIREMENT. SPECIFIC CLASS AVAILABLE UPON REQUEST.

**PROPRIETARY AND CONFIDENTIAL**  
THIS DRAWING, AND THE INFORMATION CONTAINED HEREIN, ARE THE PROPERTY OF SHEREX AND ARE NOT TO BE USED IN ANY MANNER DETRIMENTAL TO THE INTEREST OF THE COMPANY.  
SHEREX RESERVES THE RIGHT TO REVISE PART/DRAWING WITHOUT NOTICE.

		UNLESS OTHERWISE SPECIFIED: DIMENSIONS ARE IN INCHES TOLERANCES: ANGULAR: MACH ±1 BEND ±1 TWO PLACE DECIMAL ±.01 THREE PLACE DECIMAL ±.005 INTERPRET GEOMETRIC TOLERANCING PER: ASME Y14.5M-1994 MATERIAL C1008/C1010/C1110 FINISH ZINC PLATE W/CLEAR TRIVALENT CHROMATE PER SFS-01-001		NAME DATE	
			DRAWN	JLA	8/11/03
			CHECKED		
			ENG APPR.	JLA	8/11/03
			MFG APPR.	AJP	8/11/03
			Q.A.		
			COMMENTS: E-mail: info@sherex.com www.sherex.com Phone: 866-474-3739 Fax: 716-875-0358		
NEXT ASSY	USED ON				
APPLICATION		DO NOT SCALE DRAWING			



TITLE:  
FLAT HEAD OPEN END

SIZE <b>A</b>	DWG. NO. CA-5013S-350	REV C
------------------	--------------------------	----------

SCALE: 1.5; | WEIGHT: .0222 kg | SHEET 1 OF 1