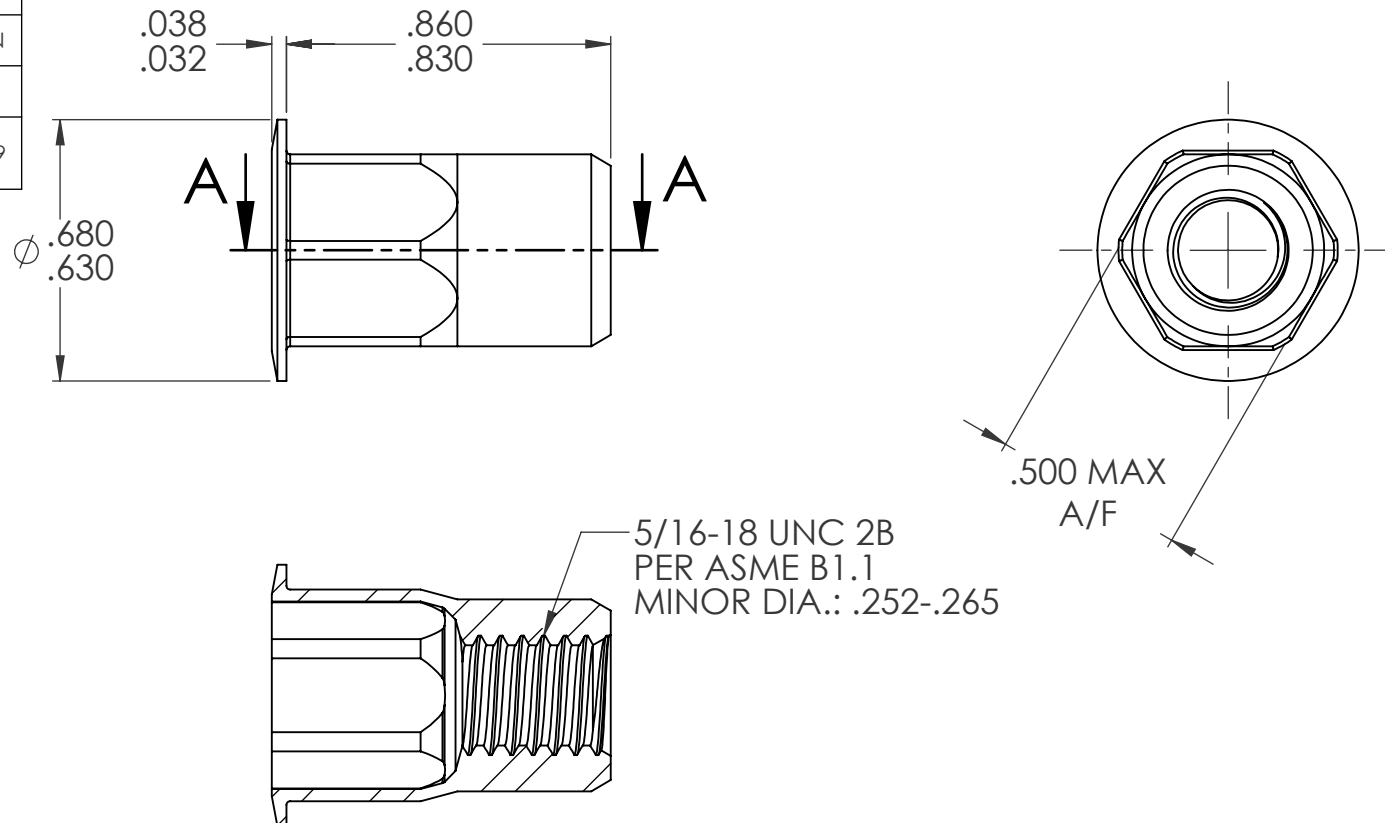


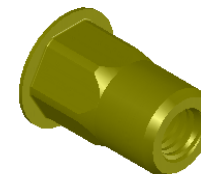
| REVISIONS |                                |         |      |
|-----------|--------------------------------|---------|------|
| REV.      | DESCRIPTION                    | DATE    | ECN  |
| A         | INITIAL RELEASE                | 4/29/05 |      |
| B         | NEW FINISH PER SFS-01-001, SC2 | 1/19/15 | 1739 |



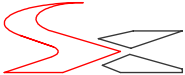
**NOTE:**

1. GRIP RANGE: .150 - .312
2. HOLE SIZE: .500 +.004/- .000 A/F AFTER ALL APPLIED FINISHES.
3. INSTALLED LENGTH: .515 MAX.
4. LUBRICATION: WAX
5. INSTALLATION TOOL: SSG 803 SPIN SPIN

**SECTION A-A**



**PROPRIETARY AND CONFIDENTIAL**  
THIS DRAWING, AND THE INFORMATION CONTAINED HEREIN, ARE THE PROPERTY OF SHEREX AND ARE NOT TO BE USED IN ANY MANNER DETRIMENTAL TO THE INTEREST OF THE COMPANY.  
  
SHEREX RESERVES THE RIGHT TO REVISE PART/DRAWING WITHOUT NOTICE.

|             |         |  |  |      |         |   |                               |              |
|-------------|---------|--|--|------|---------|---|-------------------------------|--------------|
|             |         | UNLESS OTHERWISE SPECIFIED:  |  | NAME | DATE    |  |                               |              |
|             |         | DIMENSIONS ARE IN INCHES<br>TOLERANCES:  | DRAWN  | TOO  | 4/29/05 |   |                               |              |
|             |         | ANGULAR: MACH±1 BEND ±1<br>TWO PLACE DECIMAL ±.01<br>THREE PLACE DECIMAL ±.005 | CHECKED  |      |         | TITLE:<br><br>HALF HEX LARGE FLANGE OPEN END  |                               |              |
|             |         |  | ENG APPR.  | TOO  | 4/29/05 |   |                               |              |
|             |         |  | MFG APPR.  | AJP  | 4/29/05 |   |                               |              |
|             |         | INTERPRET GEOMETRIC<br>TOLERANCING PER:<br>ASME Y14.5M-1994                    | Q.A.   |      |         |   |                               |              |
|             |         | MATERIAL<br><br>C1008/C1010  | COMMENTS:<br>E-mail: info@sherex.com<br>www.sherex.com<br>Phone: 866-474-3739<br>Fax: 716-875-0358 |      |         | SIZE<br><b>A</b>  | DWG. NO.<br><br>CAH2-3118-312 | REV<br><br>B |
| NEXT ASSY   | USED ON | FINISH<br>ZINC PLATE W/YELLOW TRIVALENT<br>CHROMATE PER SFS-01-001, SC2        |  |      |         |   |                               |              |
| APPLICATION |         | DO NOT SCALE DRAWING   |  |      |         | SCALE: 2:1 WEIGHT: .0101 kg SHEET 1 OF 1  |                               |              |