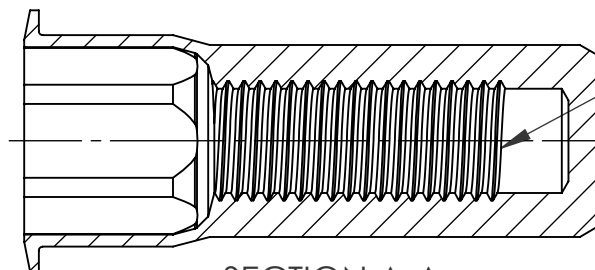
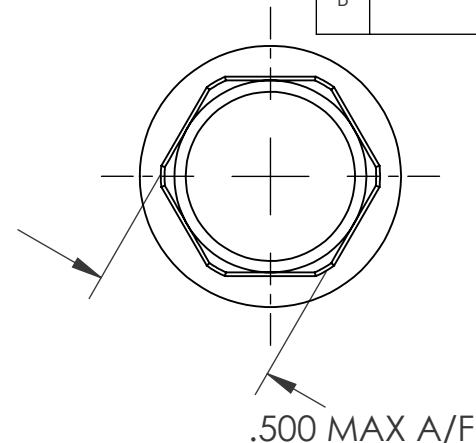


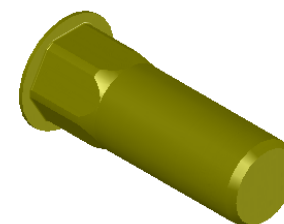
REVISIONS			
REV.	DESCRIPTION	DATE	ECN
A	INITIAL RELEASE	8/11/03	
B	NEW FINISH PER SFS-01-001, SC2	1/21/15	1745



5/16-24 UNF 2B
PER ASME B1.1
MINOR DIA.: .267 -.277


NOTE:

- GRIP RANGE: .150 - .312
- HOLE SIZE: .500 +.004/-.000 A/F AFTER ALL APPLIED FINISHES.
- INSTALLED LENGTH: 1.220 MAX.
- INSTALLED THREAD DEPTH: 1.170 REF.
- LUBRICATION: OIL
- INSTALLATION TOOL: SSG 803 SPIN SPIN



SECTION A-A

PROPRIETARY AND CONFIDENTIAL
THIS DRAWING, AND THE INFORMATION CONTAINED HEREIN, ARE THE PROPERTY OF SHEREX AND ARE NOT TO BE USED IN ANY MANNER DETRIMENTAL TO THE INTEREST OF THE COMPANY.
SHEREX SOLUTIONS RESERVES THE RIGHT TO REVISE PART/DRAWING WITHOUT NOTICE.

		UNLESS OTHERWISE SPECIFIED:		NAME	DATE		
		DIMENSIONS ARE IN INCHES TOLERANCES: ANGULAR: MACH ± 1 BEND ±1 TWO PLACE DECIMAL ±.01 THREE PLACE DECIMAL ±.002	DRAWN	JLA	8/11/03		
		INTERPRET GEOMETRIC TOLERANCING PER: ASME Y14.5M-1994	CHECKED				
		MATERIAL C1008/C1010	ENG APPR.	JLA	8/11/03		
			MFG APPR.	AJP	8/11/03		
		FINISH ZINC PLATE W/YELLOW TRIVALENT CHROMATE PER SFS-01-001, SC2	Q.A.			TITLE: HALF HEX LARGE FLANGE CLOSED END	
		NEXT ASSY	COMMENTS: E-mail: info@sherex.com www.sherex.com Phone: 866-474-3739 Fax: 716-875-0358				
APPLICATION		DO NOT SCALE DRAWING				SIZE DWG. NO.	REV
						A CAH2-3124-312B	B
						SCALE: 2:1 WEIGHT: .0213 kg	SHEET 1 OF 1