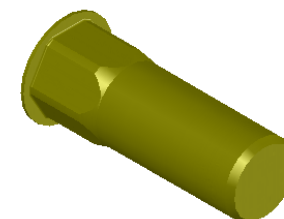
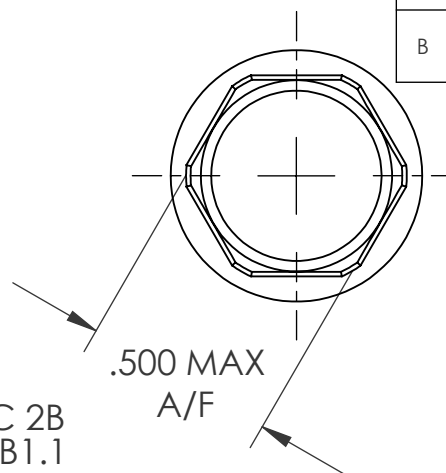


SECTION A-A


NOTE:

1. GRIP RANGE: .150 - .312
2. HOLE SIZE: .500 +.004/-.000 A/F AFTER ALL APPLIED FINISHES.
3. INSTALLED LENGTH: 1.220 MAX.
4. INSTALLED THREAD DEPTH: 1.170 REF.
5. LUBRICATION: OIL
6. INSTALLATION TOOL: SSG 803 SPIN SPIN

REVISIONS			
REV.	DESCRIPTION	DATE	ECN
A	INITIAL RELEASE	8/11/03	
B	NEW FINISH PER SFS-01-001, SC2	1/21/15	1745



PROPRIETARY AND CONFIDENTIAL
THIS DRAWING, AND THE INFORMATION CONTAINED HEREIN, ARE THE PROPERTY OF SHEREX AND ARE NOT TO BE USED IN ANY MANNER DETRIMENTAL TO THE INTEREST OF THE COMPANY.
SHEREX SOLUTIONS RESERVES THE RIGHT TO REVISE PART/DRAWING WITHOUT NOTICE.

		UNLESS OTHERWISE SPECIFIED:		NAME	DATE				
		DIMENSIONS ARE IN INCHES TOLERANCES: ANGULAR: MACH ± 1 BEND ±1 TWO PLACE DECIMAL ±.01 THREE PLACE DECIMAL ±.002	DRAWN	JLA	8/11/03				
		INTERPRET GEOMETRIC TOLERANCING PER: ASME Y14.5M-1994	CHECKED			TITLE: LARGE FLANGE SEMI HEX CLOSED END			
			ENG APPR.	JLA	8/11/03				
			MFG APPR.	AJP	8/11/03				
		MATERIAL C1008/C1010	Q.A.			SIZE DWG. NO. A CAH2-3716-312B			
		FINISH ZINC PLATE W/YELLOW TRIVALENT CHROMATE PER SFS-01-001, SC2	COMMENTS: E-mail: info@sherex.com www.sherex.com Phone: 866-474-3739 Fax: 716-875-0358						
NEXT ASSY	USED ON								
APPLICATION		DO NOT SCALE DRAWING				SCALE: 2:1		WEIGHT: .0179 kg	SHEET 1 OF 1