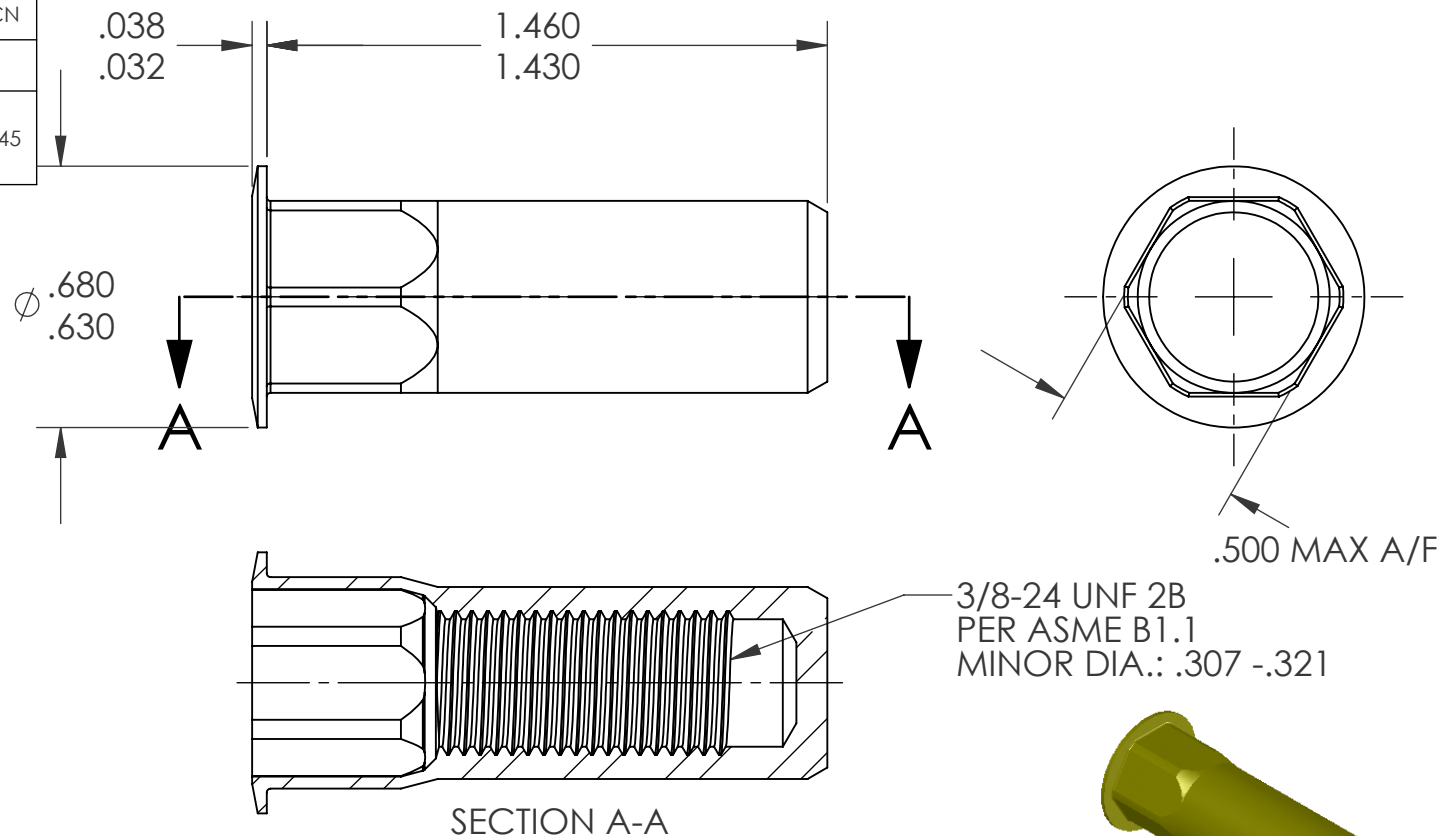



REVISIONS			
REV.	DESCRIPTION	DATE	ECN
A	INITIAL RELEASE	8/11/03	
B	NEW FINISH PER SFS-01-001, SC2, FIXED THREAD INFORMATION	1/21/15	1745



NOTE:

1. GRIP RANGE: .150 - .312
2. HOLE SIZE: .500 +.004/-.000 A/F AFTER ALL APPLIED FINISHES.
3. INSTALLED LENGTH: 1.220 MAX.
4. INSTALLED THREAD DEPTH: 1.170 REF.
5. LUBRICATION: OIL
6. INSTALLATION TOOL: SSG 803 SPIN SPIN

PROPRIETARY AND CONFIDENTIAL
THIS DRAWING, AND THE INFORMATION CONTAINED HEREIN, ARE THE PROPERTY OF SHEREX AND ARE NOT TO BE USED IN ANY MANNER DETRIMENTAL TO THE INTEREST OF THE COMPANY.
SHEREX SOLUTIONS RESERVES THE RIGHT TO REVISE PART/DRAWING WITHOUT NOTICE.

		UNLESS OTHERWISE SPECIFIED:		NAME	DATE					
		DIMENSIONS ARE IN INCHES TOLERANCES: ANGULAR: MACH ± 1 BEND ±1 TWO PLACE DECIMAL ±.01 THREE PLACE DECIMAL ±.002	DRAWN	JLA	8/11/03					
		INTERPRET GEOMETRIC TOLERANCING PER: ASME Y14.5M-1994	CHECKED							
			ENG APPR.	JLA	8/11/03	TITLE: HALF HEX LARGE FLANGE CLOSED END				
			MFG APPR.	AJP	8/11/03					
			Q.A.							
		MATERIAL C1008/C1010	COMMENTS: E-mail: info@sherex.com www.sherex.com Phone: 866-474-3739 Fax: 716-875-0358			SIZE DWG. NO. A CAH2-3724-312B			REV B	
		FINISH ZINC PLATE W/YELLOW TRIVALENT CHROMATE PER SFS-01-001, SC2								
NEXT ASSY	USED ON									
APPLICATION		DO NOT SCALE DRAWING				SCALE: 2:1 WEIGHT:.0177 kg SHEET 1 OF 1				