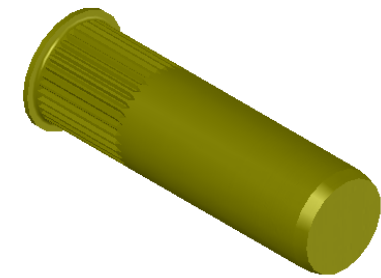
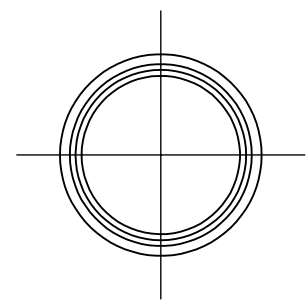


- NOTE:
- GRIP RANGE: .130 - .225
 - HOLE SIZE: .297 +.006/- .000 AFTER ALL APPLIED FINISHES.
 - INSTALLED LENGTH: .735 MAX
 - INSTALLED THREAD DEPTH: .840 REF.
 - LUBRICATION: OIL
 - INSTALLATION TOOL: SSG 802 SPIN SPIN

REVISIONS			
REV.	DESCRIPTION	DATE	ECN
A	INITIAL RELEASE	5/23/05	
B	NEW FINISH PER SFS-01-001, SC2	1/19/15	1739




PROPRIETARY AND CONFIDENTIAL

THIS DRAWING, AND THE INFORMATION CONTAINED HEREIN, ARE THE PROPERTY OF SHEREX, AND ARE NOT TO BE USED IN ANY MANNER DETRIMENTAL TO THE INTEREST OF THE COMPANY.

SHEREX SOLUTIONS RESERVES THE RIGHT TO REVISE PART/DRAWING WITHOUT NOTICE.

		UNLESS OTHERWISE SPECIFIED:		NAME	DATE
		DIMENSIONS ARE IN INCHES TOLERANCES: ANGULAR: MACH±1 BEND ±1 TWO PLACE DECIMAL ±.01 THREE PLACE DECIMAL ±.002	DRAWN	TOO	5/23/05
		INTERPRET GEOMETRIC TOLERANCING PER: ASME Y14.5M-1994	CHECKED		
			ENG APPR.	TOO	5/23/05
			MFG APPR.	AJP	5/23/05
		MATERIAL	Q.A.		
		C1008/C1010	COMMENTS:		
		FINISH	E-mail: info@sherex.com		
NEXT ASSY	USED ON	ZINC PLATE W/YELLOW TRIVALENT CHROMATE PER SFS-01-001, SC2	www.sherex.com		
			Phone: 866-474-3739		
			Fax: 716-875-0358		
APPLICATION		DO NOT SCALE DRAWING			

			
TITLE: SMALL FLANGE CLOSED END			
SIZE	DWG. NO.		REV
A	CAK2-1024-225B		B
SCALE: 2:1		WEIGHT: .0056 kg	SHEET 1 OF 1