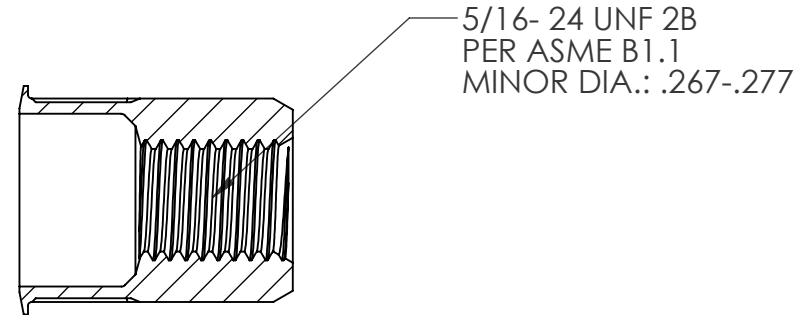


REVISIONS			
REV.	DESCRIPTION	DATE	ECN
A	INITIAL RELEASE	7/31/09	1202




SECTION A-A

NOTE:

- GRIP RANGE: .027-.150
- HOLE SIZE: .531+.006/-0.000 AFTER ALL APPLIED FINISHES.
- INSTALLED LENGTH: .470 MAX
- LUBRICATION: WAX
- INSTALLATION TOOL: SSG 803 SPIN-SPIN

**PROPRIETARY AND CONFIDENTIAL**  
 THIS DRAWING, AND THE INFORMATION CONTAINED HEREIN, ARE THE PROPERTY OF SHEREX AND ARE NOT TO BE USED IN ANY MANNER DETRIMENTAL TO THE INTEREST OF THE COMPANY.  
 SHEREX SOLUTIONS RESERVES THE RIGHT TO REVISE PART/DRAWING WITHOUT NOTICE.

		UNLESS OTHERWISE SPECIFIED:		NAME	DATE		
		DIMENSIONS ARE IN INCHES TOLERANCES: ANGULAR: MACH ± 1 BEND ± 1 TWO PLACE DECIMAL ± .01 THREE PLACE DECIMAL ± .005		DRAWN	CL		7/31/09
		INTERPRET GEOMETRIC TOLERANCING PER: ASME Y14.5M-1994		CHECKED			
		MATERIAL		ENG APPR.	JVK		7/31/09
		FINISH		MFG APPR.			
		ZINC PLATE YELLOW DICHROMATE PER ASTM B633 Fe/Zn 8um TYPE II		Q.A.	JVK	7/31/09	
NEXT ASSY	USED ON			COMMENTS:		<b>TITLE:</b> SMALL FLANGE OPEN END	
APPLICATION		DO NOT SCALE DRAWING		E-mail: info@sherex.com www.sherex.com Phone: 866-474-3739 Fax: 716-875-0358			
				SIZE DWG. NO.	REV		
				<b>A</b>	CAK2-3124-150	<b>A</b>	
				SCALE: 2:1	WEIGHT: .0098 kg	SHEET 1 OF 1	