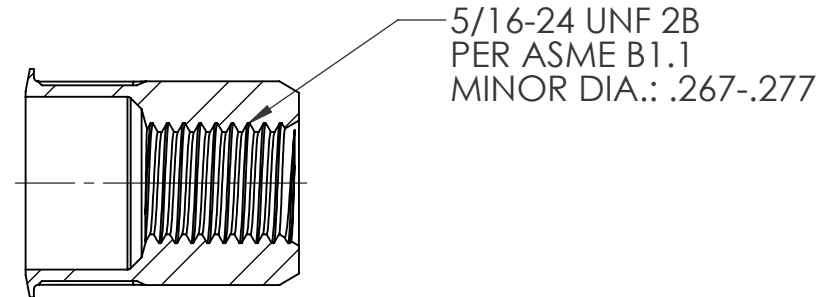
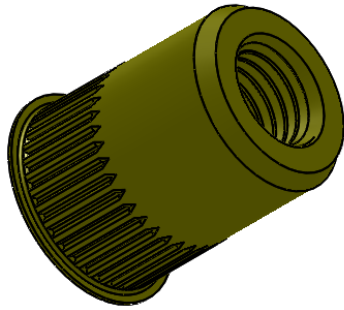
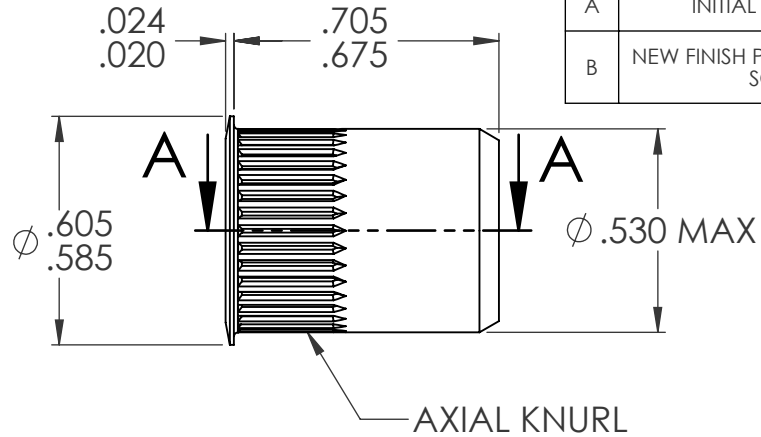
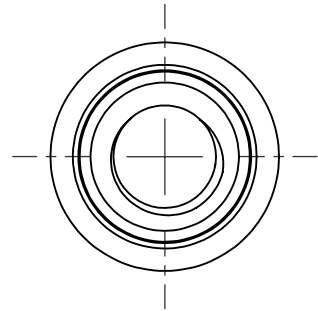


REVISIONS			
REV.	DESCRIPTION	DATE	ECN
A	INITIAL RELEASE	7/31/09	1202
B	NEW FINISH PER SFS-01-001, SC2	1/16/15	1737



SECTION A-A

NOTE:

- GRIP RANGE: .027-.150
- HOLE SIZE: .531 +.006/-.000 AFTER ALL APLIED FINISHES
- INSTALLED LENGTH: .470 MAX
- LUBRICATION: WAX
- INSTALLATION TOOL: SSG 803 SPIN SPIN

**PROPRIETARY AND CONFIDENTIAL**  
THIS DRAWING, AND THE INFORMATION CONTAINED HERIN, ARE THE PROPERTY OF SHEREX AND ARE NOT TO BE USED IN ANY MANNER DETRIMENT TO THE INTEREST OF THE COMPANY.  
SHEREX RESERVES THE RIGHT TO REVISE PART/DRAWING WITHOUT NOTICE.

		UNLESS OTHERWISE SPECIFIED:					
		DIMENSIONS ARE IN INCHES TOLERANCES:		DRAWN		NAME CL	
		ANGULAR: MACH $\pm 1$ BEND $\pm 1$ TWO PLACE DECIMAL $\pm .01$ THREE PLACE DECIMAL $\pm .005$		CHECKED		DATE 7/31/09	
		INTERPRET GEOMETRIC TOLERANCING PER: ASME Y14.5M-1994		ENG APPR.		JVK 7/31/09	
		MATERIAL C1008/C1010		MFG APPR.			
		FINISH ZINC PLATE W/YELLOW TRIVALENT CHROMATE PER SFS-01-001, SC2		Q.A.		JVK 7/31/09	
NEXT ASSY		USED ON		COMMENTS:			
				E-mail: info@sherex.com www.sherex.com Phone: 866-474-3739 Fax: 716-875-0358			
APPLICATION		DO NOT SCALE DRAWING					



TITLE:

SMALL FLANGE OPEN END

SIZE <b>A</b>	DWG. NO. CAK2-3124-150	REV B
------------------	---------------------------	----------

SCALE: 2:1 WEIGHT: .0098 kg SHEET 1 OF 1