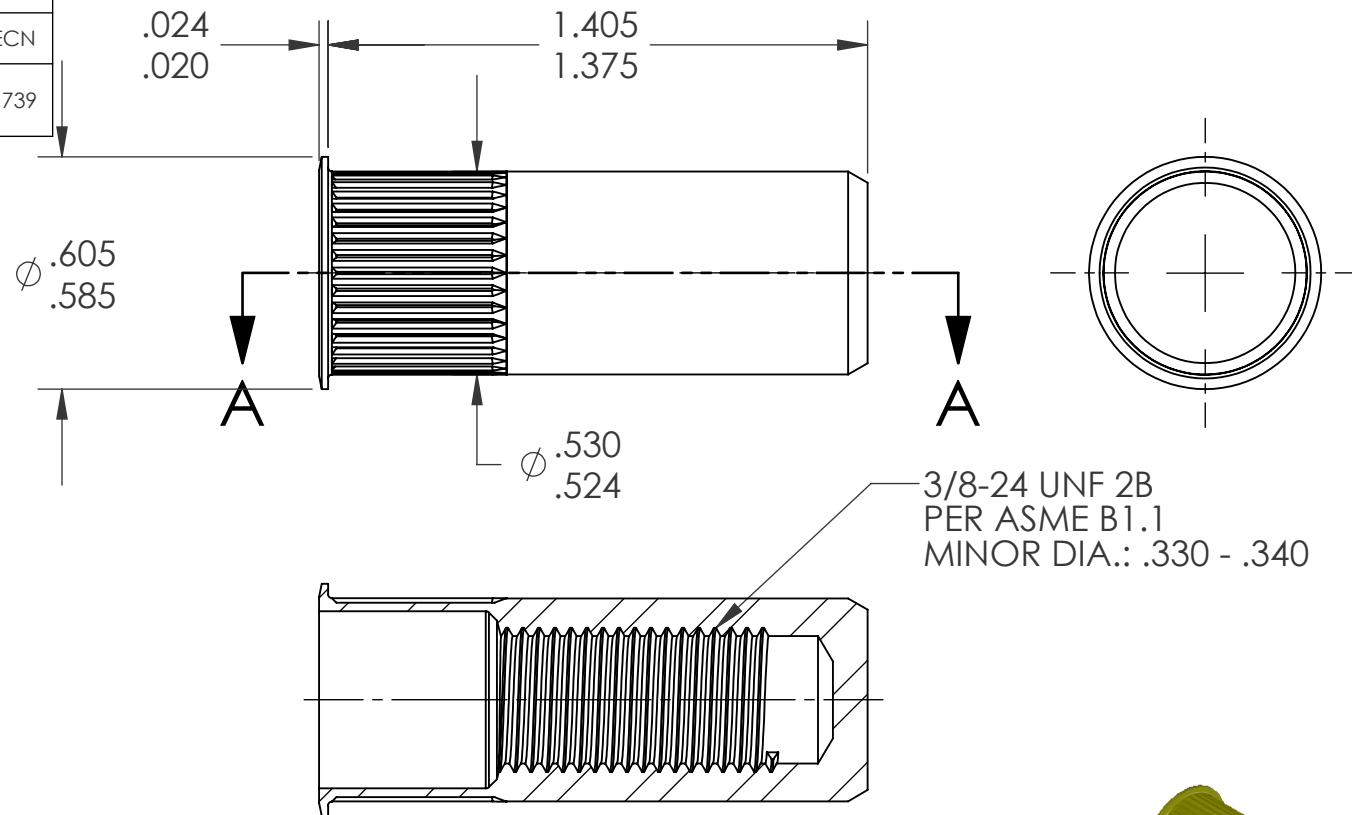


REVISIONS			
REV.	DESCRIPTION	DATE	ECN
C	NEW FINISH PER SFS-01-001, SC2	1/19/15	1739

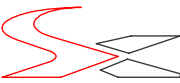


NOTE:

- GRIP RANGE: .150 - .312
- HOLE SIZE: .531 +.006/-.000 AFTER ALL APPLIED FINISHES.
- INSTALLED LENGTH: 1.025 MAX.
- INSTALLED THREAD DEPTH: 1.120 REF.
- LUBRICATION: OIL
- INSTALLATION TOOL: SSG 803 SPIN SPIN

SECTION A-A

PROPRIETARY AND CONFIDENTIAL
THIS DRAWING, AND THE INFORMATION CONTAINED HEREIN, ARE THE PROPERTY OF SHEREX AND ARE NOT TO BE USED IN ANY MANNER DETRIMENTAL TO THE INTEREST OF THE COMPANY.
SHEREX SOLUTIONS RESERVES THE RIGHT TO REVISE PART/DRAWING WITHOUT NOTICE.

		UNLESS OTHERWISE SPECIFIED:		NAME	DATE			
		DIMENSIONS ARE IN INCHES TOLERANCES: ANGULAR: MACH± 1 BEND ±1 TWO PLACE DECIMAL ±.01 THREE PLACE DECIMAL ±.002	DRAWN	TOO	5/23/05			
		INTERPRET GEOMETRIC TOLERANCING PER: ASME Y14.5M-1994	CHECKED					
		MATERIAL	ENG APPR.	TOO	5/23/05			
		FINISH	MFG APPR.	AJP	5/23/05			
NEXT ASSY	USED ON	ZINC PLATE W/YELLOW TRIVALENT CHROMATE PER SFS-01-001, SC2	COMMENTS:			TITLE:		
		C1008/C1010	E-mail: info@sherex.com			SMALL FLANGE CLOSED END		
			www.sherex.com			SIZE DWG. NO.		
			Phone: 866-474-3739			A	REV	
			Fax: 716-875-0358				CAK2-3724-312B	C
APPLICATION		DO NOT SCALE DRAWING			SCALE: 2:1		WEIGHT:.0197 kg	SHEET 1 OF 1