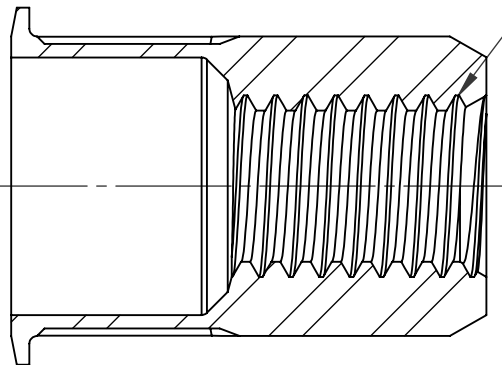


AXIAL KNURL

M6 X 1.0 6H
PER ASME B1.13M
MINOR DIA.: 4.92 - 5.15

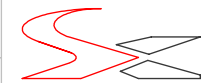


SECTION A-A

NOTE:

1. GRIP RANGE: 0.7 - 4.2
2. HOLE SIZE: 10.00 +0.15/-0.0 AFTER ALL APPLIED FINISHES.
3. INSTALLED LENGTH: 9.65 MAX.
4. LUBRICATION: WAX
5. INSTALLATION TOOL: SSG 802 SPIN SPIN

REVISIONS			
REV.	DESCRIPTION	DATE	ECN
A	INITIAL RELEASE	7/23/05	
B	NEW FINISH PER SFS-01-001, SC2	1/19/15	1739



TITLE:

SMALL FLANGE OPEN END

SIZE A	DWG. NO. CAK2-610-4.2	REV B
------------------	--------------------------	----------

SCALE: 4:1 WEIGHT: .0046 kg SHEET 1 OF 1

UNLESS OTHERWISE SPECIFIED:

DIMENSIONS ARE IN MILLIMETERS
TOLERANCES:

ANGULAR: MACH ±1 BEND ±1
TWO PLACE DECIMAL ±.10
THREE PLACE DECIMAL ±.05

INTERPRET GEOMETRIC
TOLERANCING PER:
ASME Y14.5M-1994

MATERIAL
C1008/C1010

FINISH
ZINC PLATE W/YELLOW TRIVALENT
CHROMATE PER SFS-01-001, SC2

DO NOT SCALE DRAWING

	NAME	DATE
DRAWN	TOO	7/23/05
CHECKED		
ENG APPR.	TOO	7/23/05
MFG APPR.	AJP	7/23/05
Q.A.		

COMMENTS:
E-mail: info@sherex.com
www.sherex.com
Phone: 866-474-3739
Fax: 716-875-0358

PROPRIETARY AND CONFIDENTIAL
THIS DRAWING, AND THE INFORMATION CONTAINED HEREIN, ARE THE PROPERTY OF SHEREX AND ARE NOT TO BE USED IN ANY MANNER DETRIMENTAL TO THE INTEREST OF THE COMPANY.

SHEREX RESERVES THE RIGHT TO REVISE PART/DRAWING WITHOUT NOTICE.

NEXT ASSY	USED ON	
APPLICATION		