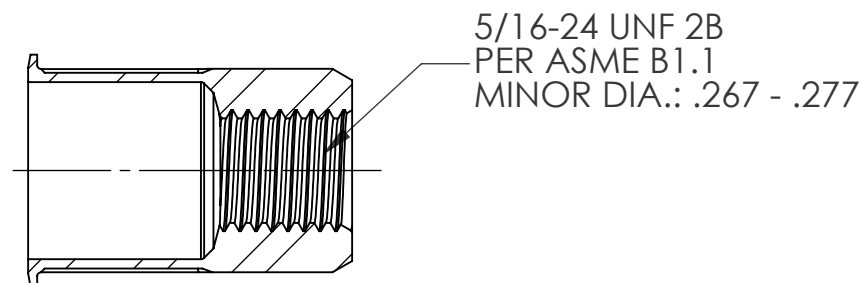
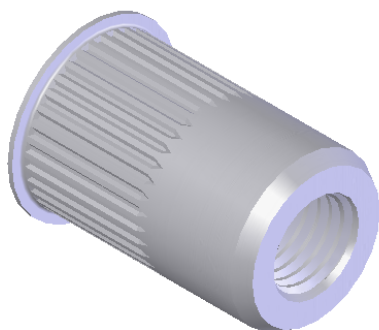
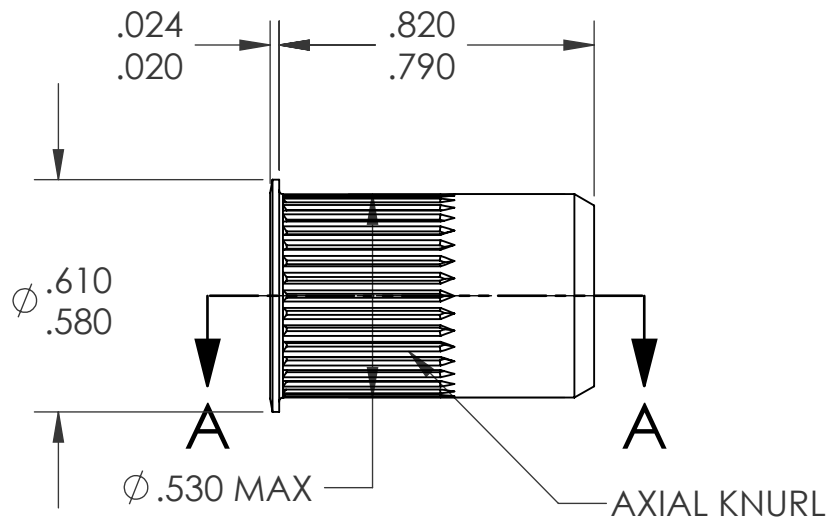


REVISIONS			
REV.	DESCRIPTION	DATE	ECN
A	INITIAL RELEASE	4/28/09	1172




SECTION A-A

NOTE:

1. GRIP RANGE: .150 - .312
2. HOLE SIZE: .531 +.006/-.000 AFTER ALL APPLIED FINISHES.
3. INSTALLED LENGTH: .425 MAX.
4. LUBRICATION: WAX
5. INSTALLATION TOOL: SSG 803 SPIN SPIN

**PROPRIETARY AND CONFIDENTIAL**  
THIS DRAWING, AND THE INFORMATION CONTAINED HEREIN, ARE THE PROPERTY OF SHEREX, AND ARE NOT TO BE USED IN ANY MANNER DETRIMENTAL TO THE INTEREST OF THE COMPANY.  
SHEREX SOLUTIONS RESERVES THE RIGHT TO REVISE PART/DRAWING WITHOUT NOTICE.

		UNLESS OTHERWISE SPECIFIED:		NAME	DATE			
		DIMENSIONS ARE IN INCHES TOLERANCES: ANGULAR: MACH $\pm 1$ BEND $\pm 1$ TWO PLACE DECIMAL $\pm .01$ THREE PLACE DECIMAL $\pm .002$	DRAWN	TWR	4/28/09			
		INTERPRET GEOMETRIC TOLERANCING PER: ASME Y14.5M-1994	CHECKED					
		MATERIAL	ENG APPR.	JVK	4/28/09			
		5056 ALUMINUM	MFG APPR.					
		FINISH	Q.A.	JVK	4/28/09	TITLE:  SMALL FLANGE OPEN END		
		NONE	COMMENTS: E-mail: info@sherex.com www.sherex.com Phone: 866-474-3739 Fax: 716-875-0358					
NEXT ASSY	USED ON							
APPLICATION		DO NOT SCALE DRAWING						
			SIZE			DWG. NO.		REV
			A			CAK3-3124-312		A
			SCALE: 2:1			WEIGHT: kg		SHEET 1 OF 1