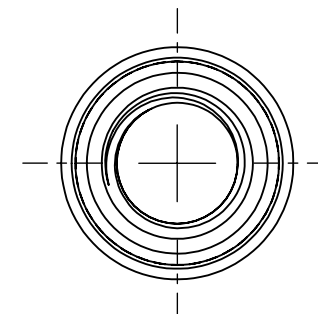
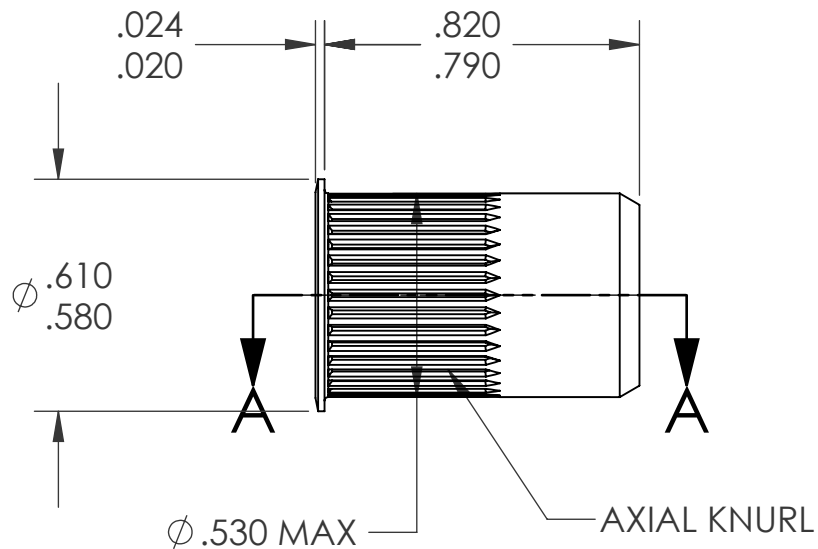
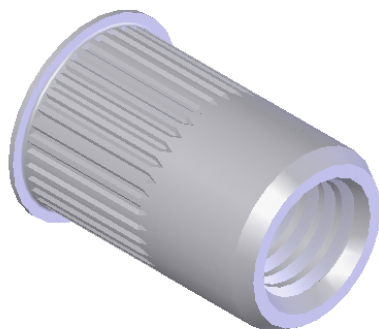


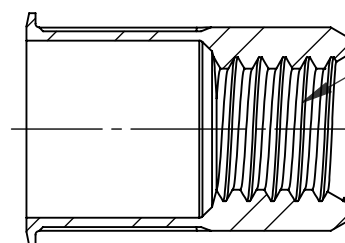
REVISIONS			
REV.	DESCRIPTION	DATE	ECN
A	INITIAL RELEASE	4/28/09	1172



3/8-16 UNC 2B  
PER ASME B1.1  
MINOR DIA.: .307 - .321

#### NOTE:

- GRIP RANGE: .150 - .312
- HOLE SIZE: .531 +.006/-.000 AFTER ALL APPLIED FINISHES.
- INSTALLED LENGTH: .425 MAX.
- LUBRICATION: WAX
- INSTALLATION TOOL: SSG 803 SPIN SPIN



SECTION A-A

**PROPRIETARY AND CONFIDENTIAL**  
THIS DRAWING, AND THE INFORMATION CONTAINED HEREIN, ARE THE PROPERTY OF SHEREX, AND ARE NOT TO BE USED IN ANY MANNER DETRIMENTAL TO THE INTEREST OF THE COMPANY.  
SHEREX SOLUTIONS RESERVES THE RIGHT TO REVISE PART/DRAWING WITHOUT NOTICE.

		UNLESS OTHERWISE SPECIFIED:		NAME	DATE				
		DIMENSIONS ARE IN INCHES TOLERANCES: ANGULAR: MACH ± 1 BEND ±1 TWO PLACE DECIMAL ±.01 THREE PLACE DECIMAL ±.002	DRAWN	TWR	4/28/09	TITLE:  SMALL FLANGE OPEN END			
		INTERPRET GEOMETRIC TOLERANCING PER: ASME Y14.5M-1994	CHECKED						
		MATERIAL  5056 ALUMINUM	ENG APPR.	JVK	4/28/09				
		FINISH  NONE	MFG APPR.						
NEXT ASSY	USED ON		Q.A.	JVK	4/28/09	SIZE DWG. NO.  <b>A</b> CAK3-3716-312			
			COMMENTS: E-mail: info@sherex.com www.sherex.com Phone: 866-474-3739 Fax: 716-875-0358						
APPLICATION		DO NOT SCALE DRAWING				SCALE: 2:1		WEIGHT: kg	SHEET 1 OF 1