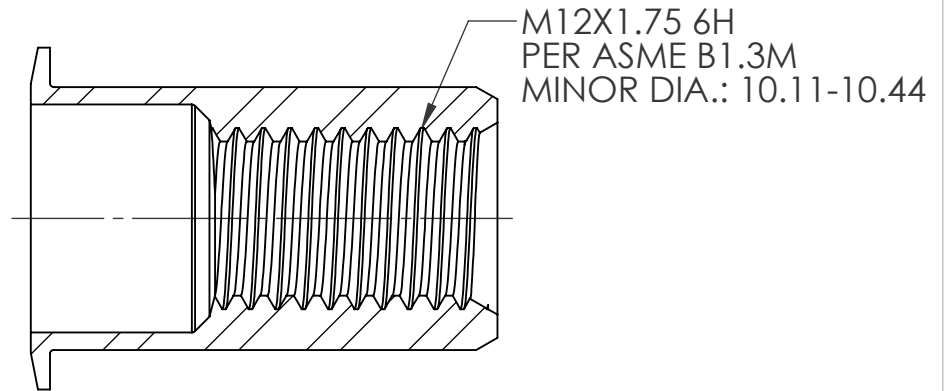
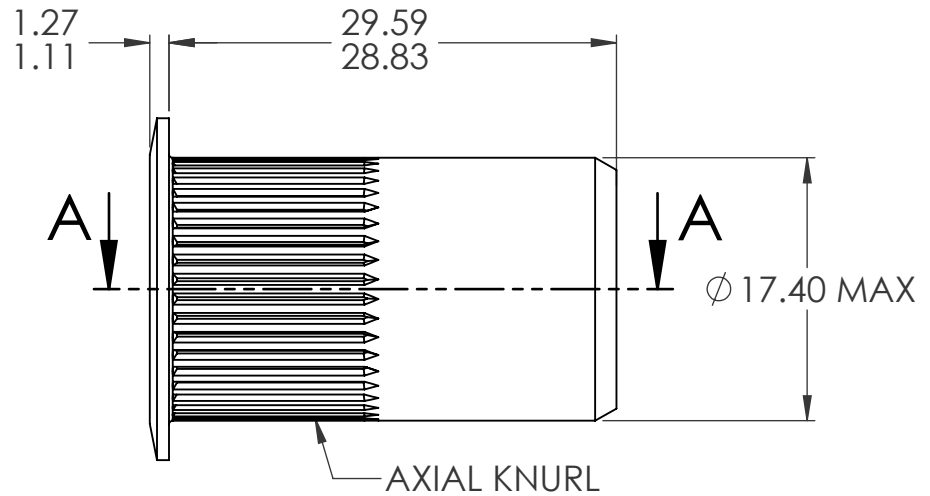
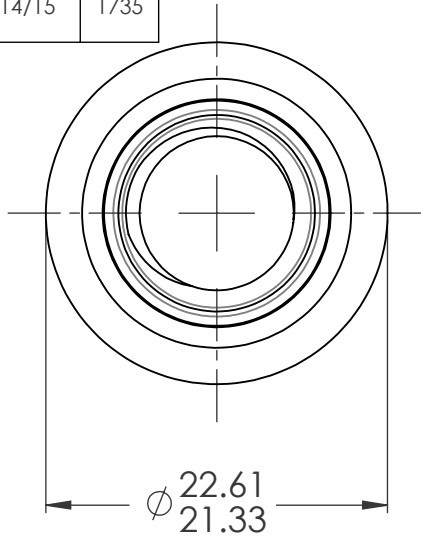
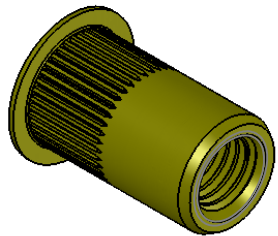


REVISIONS			
REV.	DESCRIPTION	DATE	ECN
A	INITIAL RELEASE	7/20/05	
B	NEW FINISH PER SFS-01-001, SC2	1/14/15	1735



SECTION A-A

- NOTE:
- GRIP RANGE: 1.6 - 5.1
 - HOLE SIZE: 17.45 +0.15/-0.0 AFTER ALL APPLIED FINISHES.
 - INSTALLED LENGTH: 21.59 MAX.
 - LUBRICATION: WAX
 - INSTALLATION TOOL: SSG 808 SPIN SPIN

PROPRIETARY AND CONFIDENTIAL
THIS DRAWING, AND THE INFORMATION CONTAINED HERIN, ARE THE PROPERTY OF SHEREX AND ARE NOT TO BE USED IN ANY MANNER DETRIMENT TO THE INTEREST OF THE COMPANY.
SHEREX RESERVES THE RIGHT TO REVISE PART/DRAWING WITHOUT NOTICE.

		UNLESS OTHERWISE SPECIFIED: DIMENSIONS ARE IN MILLIMETERS TOLERANCES:		NAME	DATE
		ANGULAR: MACH ± 1 BEND ± 1 TWO PLACE DECIMAL $\pm .10$ THREE PLACE DECIMAL $\pm .05$		DRAWN	TOO 7/20/05
		INTERPRET GEOMETRIC TOLERANCING PER: ASME Y14.5M-1994		CHECKED	
		MATERIAL C1008/C1010		ENG APPR.	TOO 7/20/05
NEXT ASSY		USED ON		MFG APPR.	AJP 7/20/05
APPLICATION		DO NOT SCALE DRAWING		Q.A.	
				COMMENTS: E-mail: info@sherex.com www.sherex.com Phone: 866-474-3739 Fax: 716-875-0358	



TITLE:
LARGE FLANGE OPEN END

SIZE A	DWG. NO. CAL2-12175-5.1	REV B
------------------	----------------------------	----------

SCALE: 2:1 WEIGHT: .0267 kg SHEET 1 OF 1