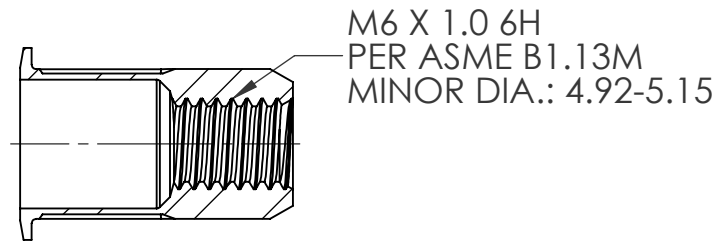
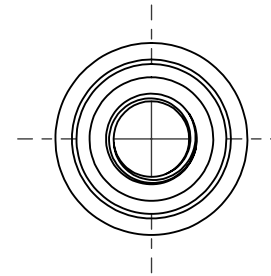
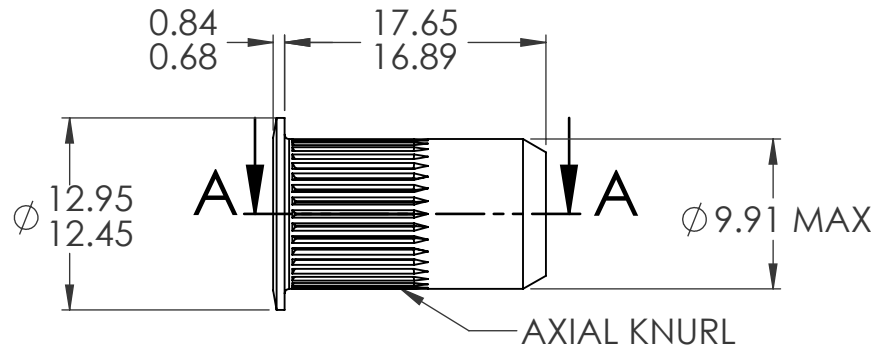
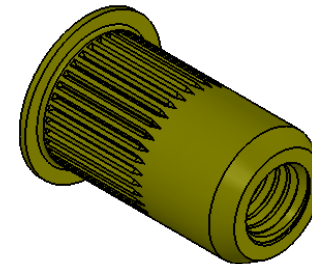


REVISIONS			
REV.	DESCRIPTION	DATE	ECN
A	INITIAL RELEASE	7/20/05	
B	NEW FINISH PER SFS-01-001, SC2	1/14/15	1735




SECTION A-A



- NOTE:
- GRIP RANGE 4.2-6.6
 - HOLE SIZE: 10.00 +0.15/-0.0 AFTER ALL APPLIED FINISHES.
 - INSTALLED LENGTH: 9.65 MAX.
 - LUBRICATION: WAX
 - INSTALLATION TOOL: SSG 802 SPIN SPIN

PROPRIETARY AND CONFIDENTIAL
 THIS DRAWING, AND THE INFORMATION CONTAINED HEREIN, ARE THE PROPERTY OF SHEREX AND ARE NOT TO BE USED IN ANY MANNER DETRIMENTAL TO THE INTEREST OF THE COMPANY.
 SHEREX RESERVES THE RIGHT TO REVISE PART/DRAWING WITHOUT NOTICE.

		UNLESS OTHERWISE SPECIFIED: DIMENSIONS ARE IN MILLIMETERS TOLERANCES: ANGULAR: MACH ±1 BEND ±1 TWO PLACE DECIMAL ±.10 THREE PLACE DECIMAL ±.05		NAME	DATE	 TITLE:
		INTERPRET GEOMETRIC TOLERANCING PER: ASME Y14.5M-1994	DRAWN	TOO	7/20/05	
		MATERIAL C1010/C1008	CHECKED			
		FINISH ZINC PLATE W/YELLOW TRIVALENT CHROMATE PER SFS-01-001, SC2	ENG APPR.	TOO	7/20/05	
NEXT ASSY	USED ON		MFG APPR.	AJP	7/20/05	SIZE DWG. NO. REV A CAL2-610-6.6 B
APPLICATION		DO NOT SCALE DRAWING	Q.A.			
			COMMENTS: E-mail: info@sherex.com www.sherex.com Phone: 866-474-3739 Fax: 716-875-0358		SCALE: 2:1 WEIGHT: .004 kg SHEET 1 OF 1	