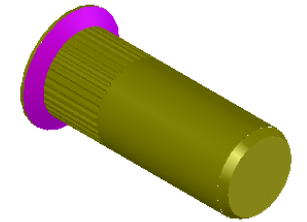


NOTE:

1. GRIP RANGE: 3.8 - 7.9
2. HOLE SIZE: 13.50 +0.15/-0.0 AFTER ALL APPLIED FINISHES.
3. INSTALLED LENGTH: 26.04 MAX.
4. INSTALLED THREAD DEPTH: 28.45 REF.
5. LUBRICATION: OIL
6. INSTALLATION TOOL: SSG 803 SPIN SPIN
7. DO NOT EXCEED 175 PSI.
8. DO NOT EXCEED 400 F FOR PERIODS GREATER THA 60 MIN.
9. SEAL MATERIAL IS INERT.

SECTION A-A
SCALE 2 : 1



PROPRIETARY AND CONFIDENTIAL

THIS DRAWING, AND THE INFORMATION CONTAINED HEREIN, ARE THE PROPERTY OF SHEREX AND ARE NOT TO BE USED IN ANY MANNER DETRIMENTAL TO THE INTEREST OF THE COMPANY.
SHEREX SOLUTIONS RESERVES THE RIGHT TO REVISE PART/DRAWING WITHOUT NOTICE.

		UNLESS OTHERWISE SPECIFIED:		NAME	DATE	
		DIMENSIONS ARE IN MILLIMETERS TOLERANCES: ANGULAR: MACH ± 1 BEND ± 1 ONE PLACE DECIMAL ± 0.10 TWO PLACE DECIMAL ± 0.05	DRAWN	TOO	8/15/05	
		INTERPRET GEOMETRIC TOLERANCING PER: ASME Y14.5M-1994	CHECKED			TITLE: LARGE FLANGE CLOSED END W/SEAL 2
		MATERIAL C1008/C1010	ENG APPR.	TOO	8/15/05	
		FINISH ZINC PLATE YELLOW DICHROMATE PER ASTM B633 Fe/Zn 8um TYPE II	MFG APPR.	AJP	8/15/05	SIZE DWG. NO.
NEXT ASSY	USED ON		Q.A.			A CAL2-8125-7.9BS2
	APPLICATION	DO NOT SCALE DRAWING	COMMENTS: E-mail: info@sherex.com www.sherex.com Phone: 866-474-3739 Fax: 716-875-0358			REV A
						SCALE: 2:1 WEIGHT: .0235 kg SHEET 1 OF 1