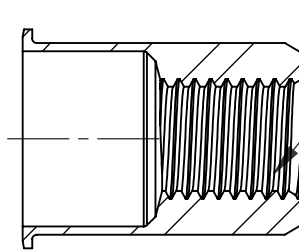
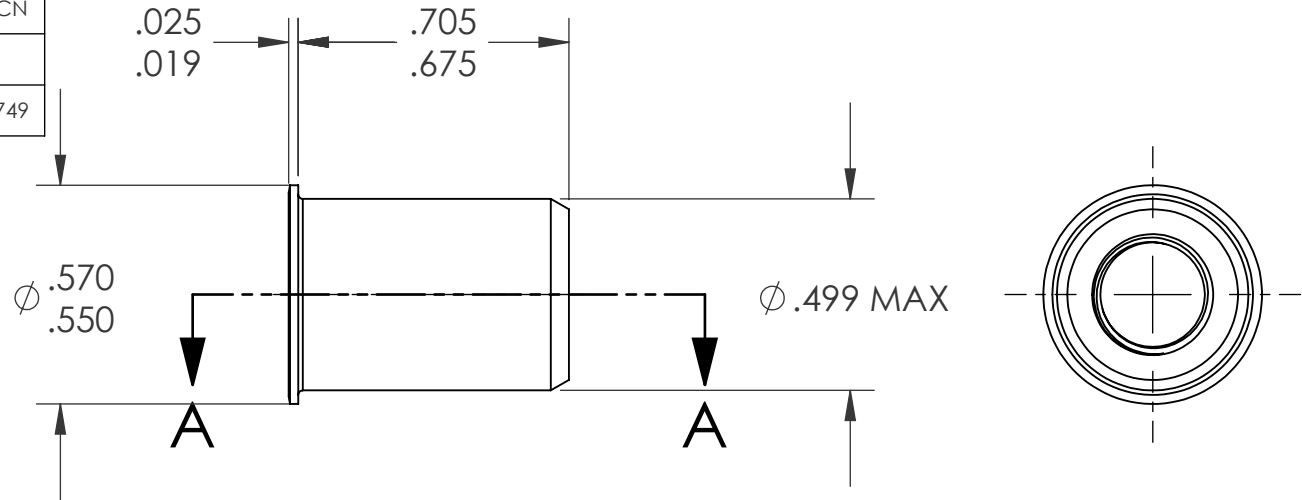


REVISIONS			
REV.	DESCRIPTION	DATE	ECN
A	INITIAL RELEASE	8/11/03	
B	NEW FINISH PER SFS-01-001	1/23/15	1749



5/16-24 UNF 2B  
PER ASME B1.1  
MINOR DIA.: .267 - .277




NOTE:

- GRIP RANGE: .040 - .200
- HOLE SIZE: .500 +.006/- .000 AFTER ALL APPLIED FINISHES.
- INSTALLED LENGTH: .540 MAX.
- INSTALLED THREAD DEPTH:
- LUBRICATION: WAX
- INSTALLATION TOOL: SSG 803 SPIN SPIN

SECTION A-A  
SCALE 2 : 1

**PROPRIETARY AND CONFIDENTIAL**  
THIS DRAWING, AND THE INFORMATION CONTAINED HEREIN, ARE THE PROPERTY OF SHEREX AND ARE NOT TO BE USED IN ANY MANNER DETRIMENTAL TO THE INTEREST OF THE COMPANY.  
SHEREX SOLUTIONS RESERVES THE RIGHT TO REVISE PART/DRAWING WITHOUT NOTICE.

		UNLESS OTHERWISE SPECIFIED:		NAME	DATE	
		DIMENSIONS ARE IN INCHES TOLERANCES: ANGULAR: MACH ± 1 BEND ± 1 TWO PLACE DECIMAL ± .01 THREE PLACE DECIMAL ± .002		DRAWN	JLA	
		INTERPRET GEOMETRIC TOLERANCING PER: ASME Y14.5M-1994		CHECKED		
		MATERIAL		ENG APPR.	JLA	8/11/03
		C1008/C1010		MFG APPR.	AJP	8/11/03
		FINISH		Q.A.		
		ZINC PLATE W/CLEAR TRIVALENT CHROMATE PER SFS-01-001		COMMENTS:		<b>TITLE:</b> <b>SMALL FLANGE SMOOTH BODY</b>
NEXT ASSY	USED ON			E-mail: info@sherex.com www.sherex.com Phone: 866-474-3739 Fax: 716-875-0358		
APPLICATION		DO NOT SCALE DRAWING		<b>SIZE DWG. NO.</b> <b>A CAO2-3124-200</b>		<b>REV</b> <b>B</b>
				SCALE: 2:1 WEIGHT: .0079 kg		SHEET 1 OF 1