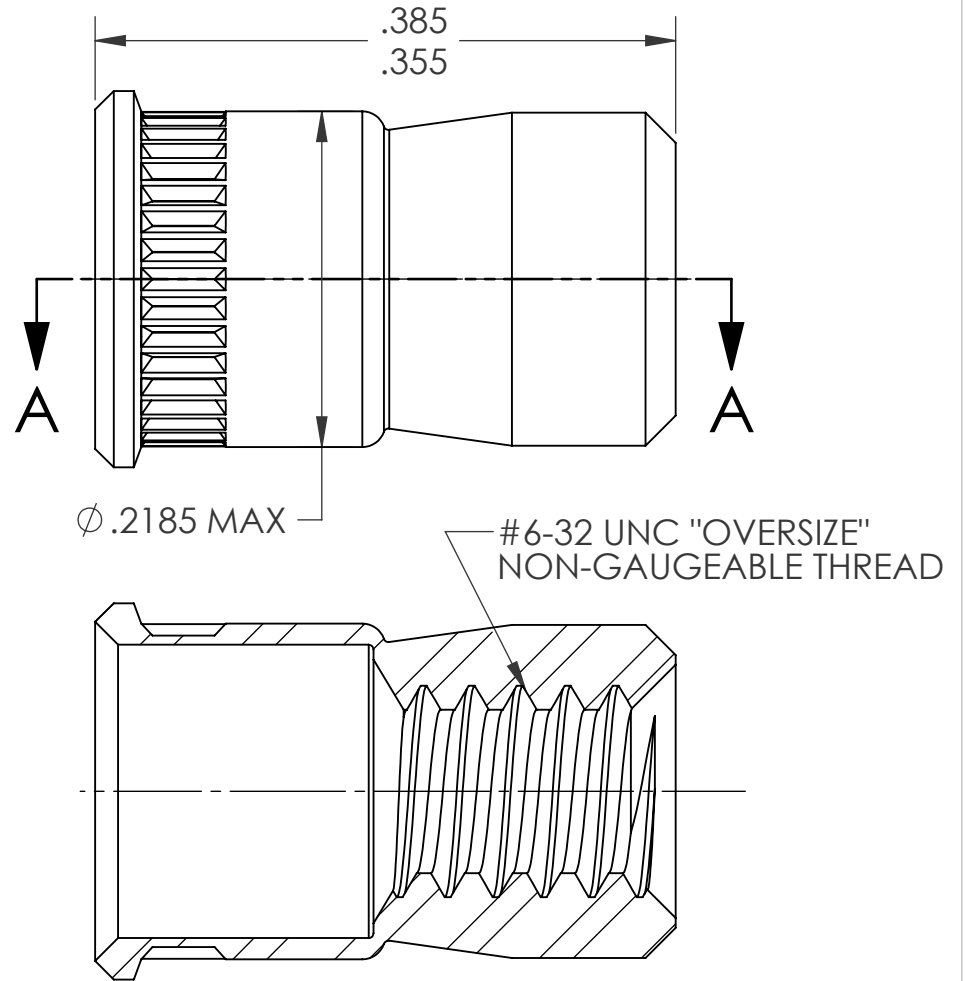
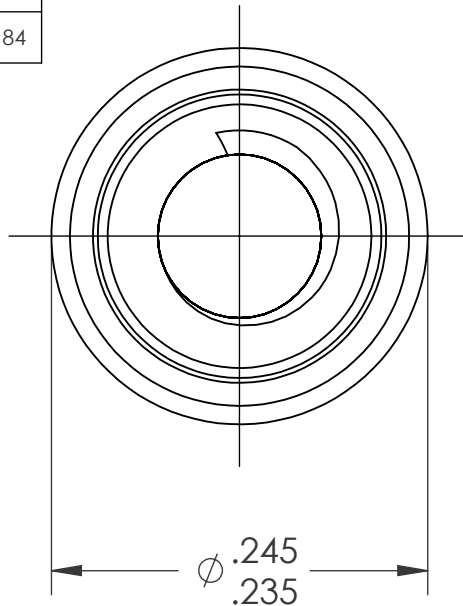
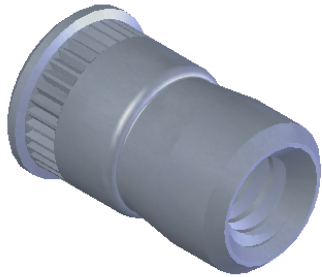


| REVISIONS | | | |
|-----------|-----------------|---------|------|
| REV. | DESCRIPTION | DATE | ECN |
| A | INITIAL RELEASE | 5/18/09 | 1184 |




NOTE:

- GRIP RANGE: .030 MIN.
- HOLE SIZE:
 - .030 - .090 MT'L THICK.: .2188 AFTER ALL APPLIED FINISHES
 - .091 - .124 MT'L THICK.: .2210 AFTER ALL APPLIED FINISHES.
 - .125 - .186 MT'L THICK.: .2280 AFTER ALL APPLIED FINISHES.
 - .187 - OVER MT'L THICK.: .2280 AFTER ALL APPLIED FINISHES.
- INSTALLED LENGTH: N/A
- LUBRICATION: NONE
- INSTALLATION TOOL: SSG 801 SPIN SPIN

SECTION A-A

PROPRIETARY AND CONFIDENTIAL
 THIS DRAWING, AND THE INFORMATION CONTAINED HEREIN, ARE THE PROPERTY OF SHEREX AND ARE NOT TO BE USED IN ANY MANNER DETRIMENTAL TO THE INTEREST OF THE COMPANY.
 SHEREX SOLUTIONS RESERVES THE RIGHT TO REVISE PART/DRAWING WITHOUT NOTICE.

| | | | | | | | |
|-------------|---------|--|--|---|------|---|---------|
| | | UNLESS OTHERWISE SPECIFIED: | | NAME | DATE |  | |
| | | DIMENSIONS ARE IN INCHES TOLERANCES: ANGULAR: MACH ±1 BEND ±1 TWO PLACE DECIMAL ±.01 THREE PLACE DECIMAL ±.002 | | DRAWN | TWR | | 5/18/09 |
| | | INTERPRET GEOMETRIC TOLERANCING PER: ASME Y14.5M-1994 | | CHECKED | | | |
| | | MATERIAL | | ENG APPR. | JVK | | 5/18/09 |
| | | 304L STAINLESS | | MFG APPR. | | | |
| | | FINISH | | Q.A. | JVK | 5/18/09 | |
| | | TIN ALLOY PER ASTM B545 | | COMMENTS: | | TITLE: CADMIUM FREE SMALL FLANGE SWAGING | |
| NEXT ASSY | USED ON | DO NOT SCALE DRAWING | | E-mail: info@sherex.com www.sherex.com Phone: 866-474-3739 Fax: 716-875-0358 | | | |
| APPLICATION | | | | SIZE DWG. NO. A CFT1-0632 | | REV A | |
| | | | | SCALE: 2:1 WEIGHT: kg | | SHEET 1 OF 1 | |