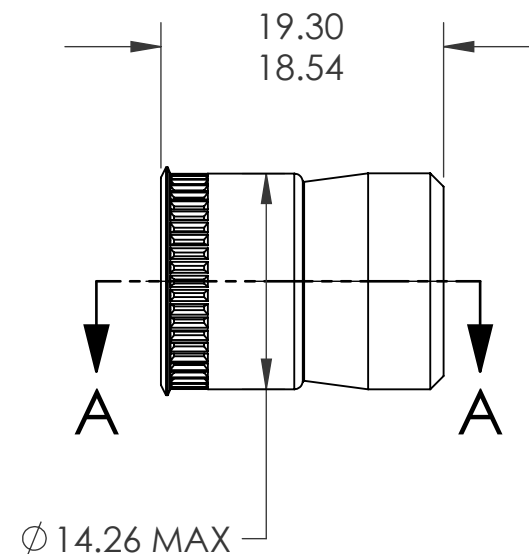
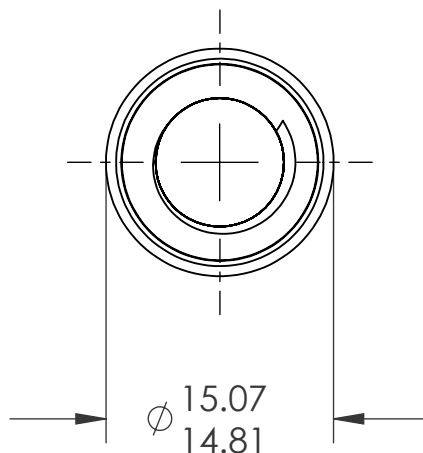
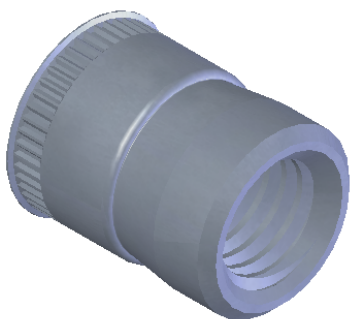
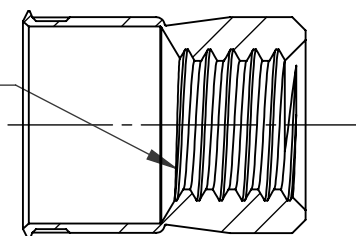


| REVISIONS |                 |         |      |
|-----------|-----------------|---------|------|
| REV.      | DESCRIPTION     | DATE    | ECN  |
| A         | INITIAL RELEASE | 5/19/09 | 1184 |



M10X1.5 "OVERSIZE"  
NON-GAUGEABLE THREAD




SECTION A-A

# NOTE:

- GRIP RANGE: 0.76 MIN.
- HOLE SIZE:
  - 0.76 - 2.29 MT'L THICK.: 14.28 AFTER ALL APPLIED FINISHES.
  - 2.31 - 3.15 MT'L THICK.: 14.28 AFTER ALL APPLIED FINISHES.
  - 3.17 - 4.72 MT'L THICK.: 14.68 AFTER ALL APPLIED FINISHES.
  - 4.72 - OVER MT'L THICK.: 14.68 AFTER ALL APPLIED FINISHES.
- INSTALLED LENGTH: N/A
- LUBRICATION: NONE
- INSTALLATION TOOL: SSG 803 SPIN SPIN

**PROPRIETARY AND CONFIDENTIAL**  
THIS DRAWING, AND THE INFORMATION CONTAINED HEREIN, ARE THE PROPERTY OF SHEREX AND ARE NOT TO BE USED IN ANY MANNER DETRIMENTAL TO THE INTEREST OF THE COMPANY.  
SHEREX SOLUTIONS RESERVES THE RIGHT TO REVISE PART/DRAWING WITHOUT NOTICE.

|             |         |  |  |      |         |   |            |              |
|-------------|---------|--|--|------|---------|---|------------|--------------|
|             |         | UNLESS OTHERWISE SPECIFIED:  |  | NAME | DATE    |  |            |              |
|             |         | DIMENSIONS ARE IN MILLIMETERS<br>TOLERANCES:<br>ANGULAR: MACH± 1 BEND ±1<br>ONE PLACE DECIMAL ±0.10<br>TWO PLACE DECIMAL ±0.05 | DRAWN  | TWR  | 5/19/09 |   |            |              |
|             |         | INTERPRET GEOMETRIC<br>TOLERANCING PER:<br>ASME Y14.5M-1994  | CHECKED  |      |         |   |            |              |
|             |         | MATERIAL   | ENG APPR.  | JVK  | 5/19/09 |   |            |              |
|             |         | 304L STAINLESS   | MFG APPR.  |      |         |   |            |              |
|             |         | FINISH   | Q.A.   | JVK  | 5/19/09 | TITLE:<br><br>CADMIUM FREE<br>SMALL FLANGE SWAGING                                    |            |              |
|             |         | TIN ALLOY<br>PER ASTM B545   | COMMENTS:<br>E-mail: info@sherex.com<br>www.sherex.com<br>Phone: 866-474-3739<br>Fax: 716-875-0358 |      |         |   |            |              |
| NEXT ASSY   | USED ON |  |  |      |         |   |            |              |
| APPLICATION |         | DO NOT SCALE DRAWING   |  |      |         | SIZE  | DWG. NO.   | REV          |
|             |         |  |  |      |         | A   | CFT1-1015  | A            |
|             |         |  |  |      |         | SCALE: 2:1  | WEIGHT: kg | SHEET 1 OF 1 |