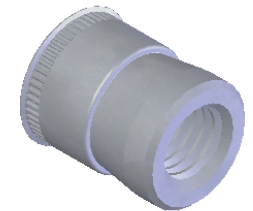


**NOTE:**

1. GRIP RANGE: 0.76 MIN.
2. HOLE SIZE:
  1. 0.76 - 2.29 MT'L THICK.: 19.05 AFTER ALL APPLIED FINISHES.
  2. 2.31 - 3.15 MT'L THICK.: 19.44 AFTER ALL APPLIED FINISHES.
  3. 3.17 - 4.72 MT'L THICK.: 19.83 AFTER ALL APPLIED FINISHES.
  4. 4.72 - OVER MT'L THICK.: 20.24 AFTER ALL APPLIED FINISHES.
3. INSTALLED LENGTH: N/A
4. LUBRICATION: NONE
5. INSTALLATION TOOL: SSG 808 SPIN SPIN

SECTION A-A



**PROPRIETARY AND CONFIDENTIAL**  
 THIS DRAWING, AND THE INFORMATION CONTAINED HEREIN, ARE THE PROPERTY OF SHEREX AND ARE NOT TO BE USED IN ANY MANNER DETRIMENTAL TO THE INTEREST OF THE COMPANY.  
 SHEREX SOLUTIONS RESERVES THE RIGHT TO REVISE PART/DRAWING WITHOUT NOTICE.

		UNLESS OTHERWISE SPECIFIED:		NAME	DATE
		DIMENSIONS ARE IN MILLIMETERS TOLERANCES: ANGULAR: MACH ± 1 BEND ± 1 ONE PLACE DECIMAL ± 0.10 TWO PLACE DECIMAL ± 0.05	DRAWN	JLA	8/11/03
		INTERPRET GEOMETRIC TOLERANCING PER: ASME Y14.5M-1994	CHECKED		
		MATERIAL	ENG APPR.	JLA	8/11/03
		12L14	MFG APPR.	AJP	8/11/03
		FINISH TIN ALLOY PER ASTM B545	Q.A.		
NEXT ASSY	USED ON		COMMENTS:		
			E-mail: info@sherex.com		
			www.sherex.com		
			Phone: 866-474-3739		
			Fax: 716-875-0358		
APPLICATION		DO NOT SCALE DRAWING			



**TITLE:**  
 CADMIUM FREE  
 SMALL FLANGE SWAGING

SIZE DWG. NO.	REV
<b>A</b> CFT2-12175	A
SCALE: 2:1	WEIGHT: .0203 kg
SHEET 1 OF 1	