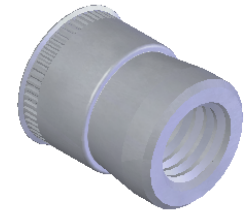


NOTE:


1. GRIP RANGE: .030 MIN.
2. HOLE SIZE:
 1. .030 - .090 MT'L THICK.: .7500 AFTER ALL APPLIED FINISHES.
 2. .091 - .124 MT'L THICK.: .7656 AFTER ALL APPLIED FINISHES.
 3. .125 - .186 MT'L THICK.: .7810 AFTER ALL APPLIED FINISHES.
 4. .186 - OVER MT'L THICK.: .7970 AFTER ALL APPLIED FINISHES.
3. INSTALLED LENGTH: N/A
4. LUBRICATION: NONE
5. INSTALLATION TOOL: SSG 808 SPIN SPIN

SECTION A-A



PROPRIETARY AND CONFIDENTIAL
 THIS DRAWING, AND THE INFORMATION CONTAINED HEREIN, ARE THE PROPERTY OF SHEREX AND ARE NOT TO BE USED IN ANY MANNER DETRIMENTAL TO THE INTEREST OF THE COMPANY.
 SHEREX SOLUTIONS RESERVES THE RIGHT TO REVISE PART/DRAWING WITHOUT NOTICE.

		UNLESS OTHERWISE SPECIFIED:		NAME	DATE
		DIMENSIONS ARE IN INCHES TOLERANCES: ANGULAR: MACH ±1 BEND ±1 TWO PLACE DECIMAL ±.01 THREE PLACE DECIMAL ±.002		DRAWN	JLA 8/11/03
		INTERPRET GEOMETRIC TOLERANCING PER: ASME Y14.5M-1994		CHECKED	
		MATERIAL		ENG APPR.	JLA 8/11/03
		12L14		MFG APPR.	AJP 8/11/03
		FINISH		Q.A.	
		TIN ALLOY PER ASTM B545		COMMENTS:	
NEXT ASSY	USED ON	DO NOT SCALE DRAWING		E-mail: info@sherex.com www.sherex.com Phone: 866-474-3739 Fax: 716-875-0358	
APPLICATION					

		
TITLE: CADMIUM FREE SMALL FLANGE SWAGING		
SIZE DWG. NO.	REV	
A	CFT2-5013	A
SCALE: 2:1	WEIGHT: .0195 kg	SHEET 1 OF 1