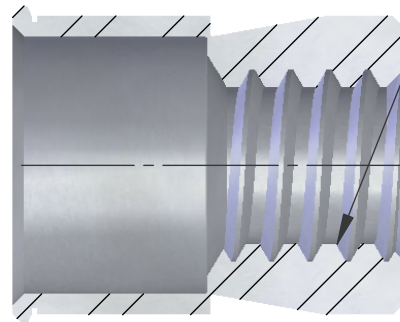
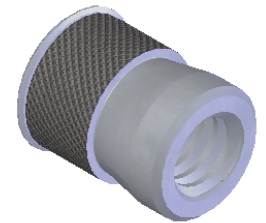


DIAMOND KUNRL
THIS SURFACE

1/4-20 UNC "OVER SIZE"
NON-GAUGEABLE THREAD



SECTION A-A




NOTE:

1. GRIP RANGE: .062 MIN.
2. HOLE SIZE: .391 +.005/-.000 AFTER ALL APPLIED FINISHES.
3. INSTALLED LENGTH: N/A
4. LUBRICATION: NONE
5. INSTALLATION TOOL: SSG 802 SPIN SPIN

PROPRIETARY AND CONFIDENTIAL

THIS DRAWING, AND THE INFORMATION CONTAINED HEREIN, ARE THE PROPERTY OF SHEREX AND ARE NOT TO BE USED IN ANY MANNER DETRIMENTAL TO THE INTEREST OF THE COMPANY.
SHEREX SOLUTIONS RESERVES THE RIGHT TO REVISE PART/DRAWING WITHOUT NOTICE.

		UNLESS OTHERWISE SPECIFIED:		NAME	DATE	
		DIMENSIONS ARE IN INCHES TOLERANCES: ANGULAR: MACH ±1 BEND ±1 TWO PLACE DECIMAL ±.01 THREE PLACE DECIMAL ±.002		DRAWN	JLA	
		INTERPRET GEOMETRIC TOLERANCING PER: ASME Y14.5M-1994		CHECKED		
		MATERIAL		ENG APPR.	JLA	8/11/03
		12L14		MFG APPR.	AJP	8/11/03
		FINISH		Q.A.		
NEXT ASSY		USED ON		COMMENTS:		TITLE: CADMIUM FREE KNURLED BODY SWAGING
APPLICATION		DO NOT SCALE DRAWING		E-mail: info@sherex.com www.sherex.com Phone: 866-474-3739 Fax: 716-875-0358		
				SIZE	DWG. NO.	REV
				A	CFW2-2520	A
				SCALE: 2:1	WEIGHT: .0033 kg	SHEET 1 OF 1