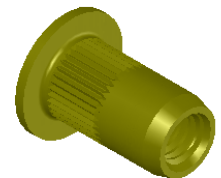


SECTION A-A

REVISIONS			
REV.	DESCRIPTION	DATE	ECN
A	INITIAL RELEASE	8/11/03	
B	UPDATED HD. & TOOLING. UPDATE TO FINISH AND SHEREX SPEC	12/6/10	1374
C	NEW FINISH PER SFS-01-001, SC2	3/2/15	1787


M4X0.7 6H
PER ASME B1.13M
MINOR DIA.: 3.24 - 3.42



- NOTE:
- GRIP RANGE: 0.25 - 3.00
 - HOLE SIZE: 6.0 +0.1/-0.0 AFTER ALL APPLIED FINISHES.
 - INSTALLED LENGTH: 7.1 REF.
 - LUBRICATION: NONE
 - INSTALLATION TOOL: SPIN PULL

PROPRIETARY AND CONFIDENTIAL
THIS DRAWING, AND THE INFORMATION CONTAINED HEREIN, ARE THE PROPERTY OF SHEREX AND ARE NOT TO BE USED IN ANY MANNER DETRIMENTAL TO THE INTEREST OF THE COMPANY.
SHEREX RESERVES THE RIGHT TO REVISE PART/DRAWING WITHOUT NOTICE.

		UNLESS OTHERWISE SPECIFIED:		NAME	DATE
		DIMENSIONS ARE IN MILLIMETERS TOLERANCES:			
		ANGULAR: MACH ±1 BEND ±1 TWO PLACE DECIMAL ±.10 THREE PLACE DECIMAL ±.05		DRAWN	JLA 8/11/03
		INTERPRET GEOMETRIC TOLERANCING PER: ASME Y14.5M-1994		CHECKED	
		MATERIAL C1008/C1010		ENG APPR.	JLA 8/11/03
		FINISH ZINC PLATE W/YELLOW TRIVALENT CHROMATE PER SFS-01-001, SC2		MFG APPR.	AJP 8/11/03
NEXT ASSY	USED ON			Q.A.	
APPLICATION		DO NOT SCALE DRAWING		COMMENTS: E-mail: info@sherex.com www.sherex.com Phone: 866-474-3739 Fax: 716-875-0358	

 TITLE: LARGE FLANGE KNURLED BODY		
SCALE: 4:1	WEIGHT: .0012 kg	SHEET 1 OF 1