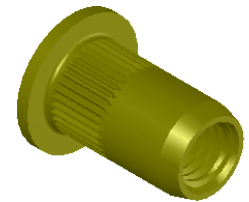


SECTION A-A

M5X0.8 6H  
PER ASME B1.13M  
MINOR DIA.: 4.13 - 4.33




REVISIONS			
REV.	DESCRIPTION	DATE	ECN
A	INITIAL RELEASE	8/11/03	
B	UPDATE HD. & TOOLING. UPDATE FINISH TO SHEREX SPEC.	12/6/10	1374
C	NEW FINISH PER SFS-01-001, SC2	3/2/15	1787

- NOTE:
- GRIP RANGE: 0.25 - 3.00
  - HOLE SIZE: 7.0 +0.1/-0.0 AFTER ALL APPLIED FINISHES.
  - INSTALLED LENGTH: 7.9 REF.
  - LUBRICATION: NONE
  - INSTALLATION TOOL: SPIN PULL

**PROPRIETARY AND CONFIDENTIAL**  
THIS DRAWING, AND THE INFORMATION CONTAINED HERIN, ARE THE PROPERTY OF SHEREX AND ARE NOT TO BE USED IN ANY MANNER DETRIMENT TO THE INTEREST OF THE COMPANY.  
SHEREX RESERVES THE RIGHT TO REVISE PART/DRAWING WITHOUT NOTICE.

		UNLESS OTHERWISE SPECIFIED: DIMENSIONS ARE IN MILLIMETERS TOLERANCES: ANGULAR: MACH ±1 BEND ±1 TWO PLACE DECIMAL ±.10 THREE PLACE DECIMAL ±.05 INTERPRET GEOMETRIC TOLERANCING PER: ASME Y14.5M-1994	NAME	DATE
		MATERIAL C1008/C1010	DRAWN JLA	8/11/03
		FINISH ZINC PLATE W/YELLOW TRIVALENT CHROMATE PER SFS-01-001, SC2	CHECKED	
			ENG APPR. JLA	8/11/03
			MFG APPR. AJP	8/11/03
			Q.A.	
			COMMENTS: E-mail: info@sherex.com www.sherex.com Phone: 866-474-3739 Fax: 716-875-0358	
NEXT ASSY	USED ON			
APPLICATION		DO NOT SCALE DRAWING		

		
TITLE: LARGE FLANGE KNURLED BODY		
SIZE <b>A</b>	DWG. NO. CLM2-580-3.0	REV C
SCALE: 4:1	WEIGHT: .0018 kg	SHEET 1 OF 1