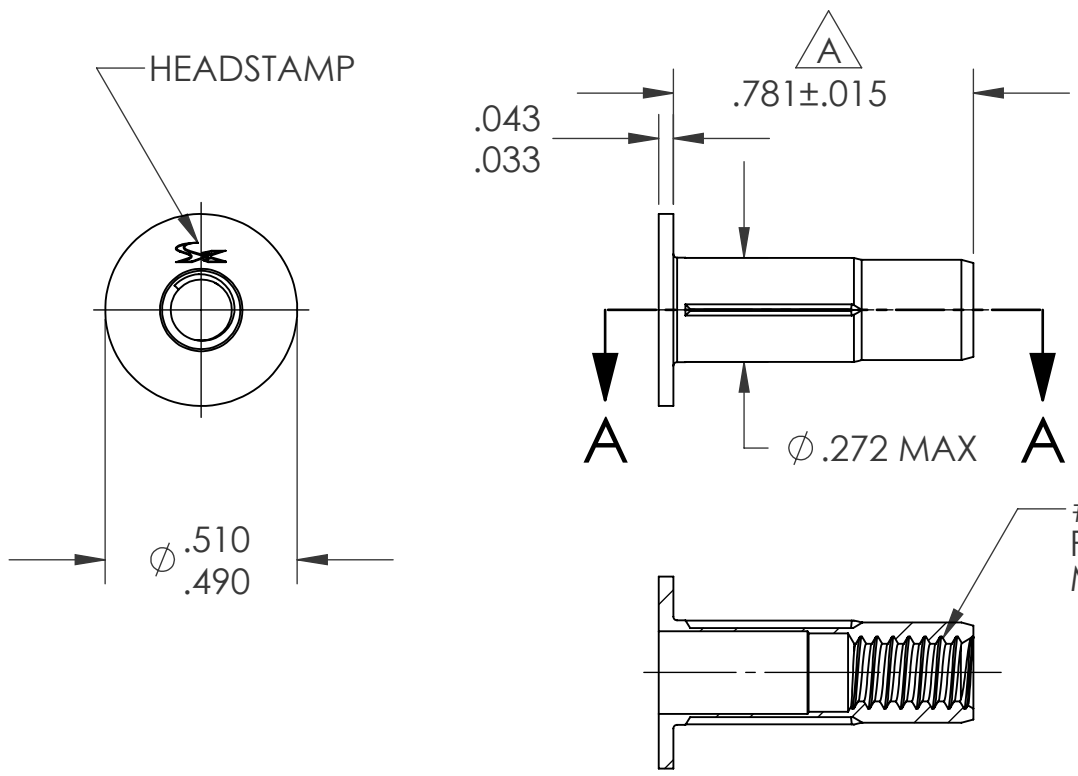
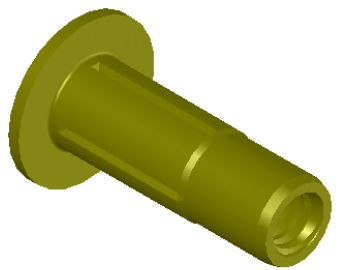


REVISIONS			
REV.	DESCRIPTION	DATE	ECN
A	.781 WAS .828	8/10/06	
B	NEW FINISH PER SFS-01-001, SC2	3/9/15	1797



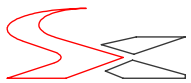
SECTION A-A
SCALE 2 : 1



- NOTE:
- GRIP RANGE: .020 - .175
 - HOLE SIZE: .273 +.006/-.000 AFTER ALL APPLIED FINISHES.
 - INSTALLED LENGTH: .425 REF.
 - LUBRICATION: NONE
 - INSTALLATION TOOL: MS 50 SPIN PULL

PROPRIETARY AND CONFIDENTIAL
THIS DRAWING, AND THE INFORMATION CONTAINED HEREIN, ARE THE PROPERTY OF SHEREX AND ARE NOT TO BE USED IN ANY MANNER DETRIMENTAL TO THE INTEREST OF THE COMPANY.
SHEREX SOLUTIONS RESERVES THE RIGHT TO REVISE PART/DRAWING WITHOUT NOTICE.

		UNLESS OTHERWISE SPECIFIED:		NAME	DATE
		DIMENSIONS ARE IN INCHES TOLERANCES: ANGULAR: MACH ± 1 BEND ± 1 TWO PLACE DECIMAL ± .01 THREE PLACE DECIMAL ± .002	DRAWN	TOO	5/23/05
		INTERPRET GEOMETRIC TOLERANCING PER: ASME Y14.5M-1994	CHECKED		
		MATERIAL	ENG APPR.	TOO	5/23/05
		C1008/C1010	MFG APPR.	AJP	5/23/05
		FINISH	Q.A.		
		ZINC PLATE W/YELLOW TRIVALENT CHROMATE PER SFS-01-001, SC2	COMMENTS:		
NEXT ASSY	USED ON		E-mail: info@sherex.com www.sherex.com Phone: 866-474-3739 Fax: 716-875-0358		
APPLICATION		DO NOT SCALE DRAWING			

		
TITLE:		
STRAIGHT SHANK SLOTTED BODY		
SIZE DWG. NO.		REV
A	CPN2-1024-175	B
SCALE: 2:1	WEIGHT: .0034 kg	SHEET 1 OF 1