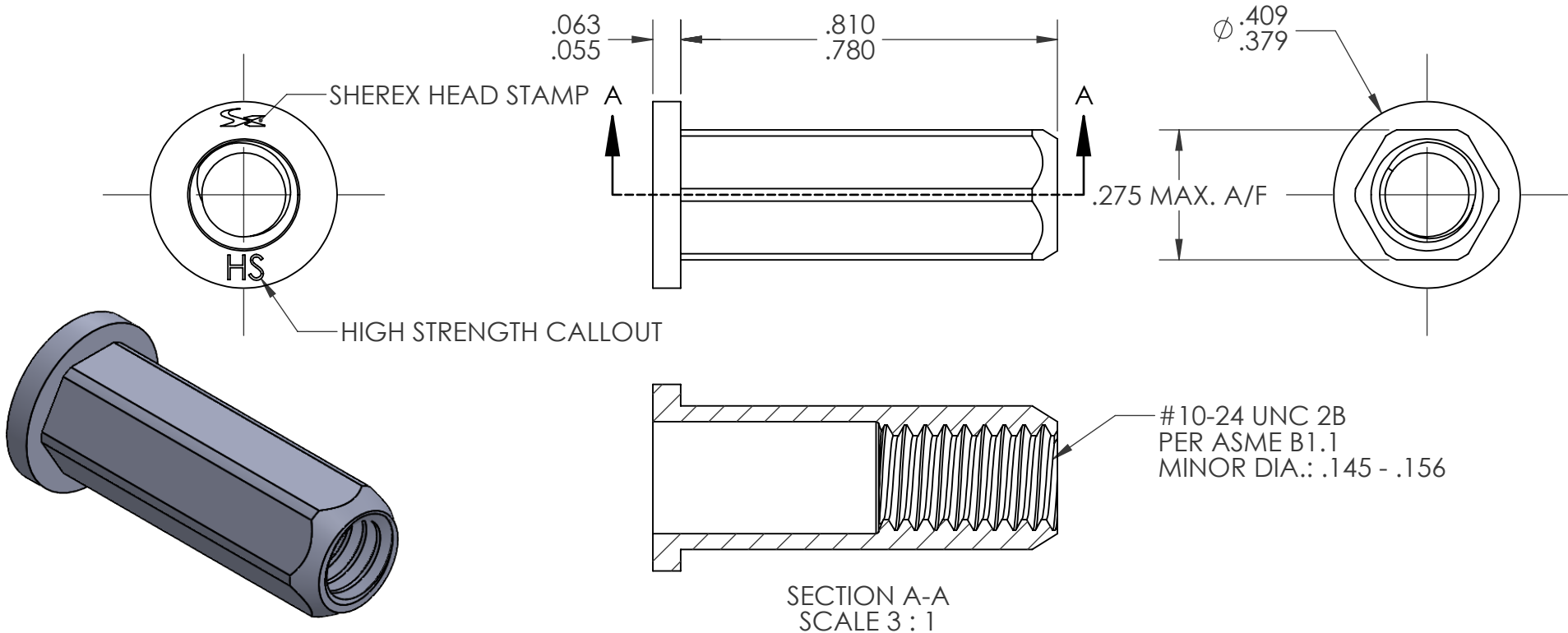


REVISIONS				
REV.	DESCRIPTION	DATE	ECN	INITIAL
A	INITIAL RELEASE	8/28/24	4528	PMZ



- NOTE:
- GRIP RANGE: .197 - .276
 - HOLE SIZE: .276 +.006/-.000 A/F AFTER ALL APPLIED FINISHES.
 - INSTALLED LENGTH: .488 MAX
 - LUBRICATION: NONE
 - INSTALLATION TOOL: FLEX5P/5S SPIN PULL


PROPRIETARY AND CONFIDENTIAL

THIS DRAWING, AND THE INFORMATION CONTAINED HEREIN, ARE THE PROPERTY OF SHEREX AND ARE NOT TO BE USED IN ANY MANNER DETRIMENTAL TO THE INTEREST OF THE COMPANY.

SHEREX SOLUTIONS RESERVES THE RIGHT TO REVISE PART/DRAWING WITHOUT NOTICE.

UNLESS OTHERWISE SPECIFIED, ALL SPECIFICATIONS REFERENCED ON THIS DRAWING WILL PERTAIN TO THE MOST RECENT AND ACTIVE REVISION.

		UNLESS OTHERWISE SPECIFIED:		NAME	DATE
		DIMENSIONS ARE IN INCHES TOLERANCES: ANGULAR: MACH± 1 BEND ±1 TWO PLACE DECIMAL ±.01 THREE PLACE DECIMAL ±.005	DRAWN	PMZ	8/29/24
		INTERPRET GEOMETRIC TOLERANCING PER: ASME Y14.5M-1994	CHECKED		
			ENG APPR.	JVK	8/29/24
			MFG APPR.	AP	8/29/24
		MATERIAL 10B21	Q.A.		
		FINISH ZINC PLATE CLEAR TRIVALENT CHROMATE PER SHEREX SFS-01-001, SC1	COMMENTS: E-mail: info@sherex.com www.sherex.com Phone: 866-474-3739 Fax: 716-875-0358		
NEXT ASSY	USED ON				
APPLICATION		DO NOT SCALE DRAWING			

		
TITLE: #10-24 LARGE FLANGE FULL HEX HIGH STRENGTH		
SIZE A	DWG. NO. HHS2-1024-276	REV A
SCALE: 2:1 WEIGHT:		SHEET 1 OF 1