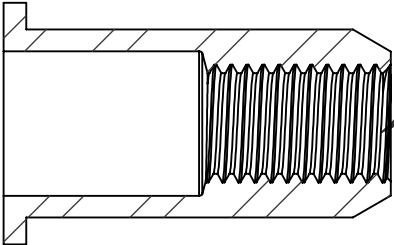
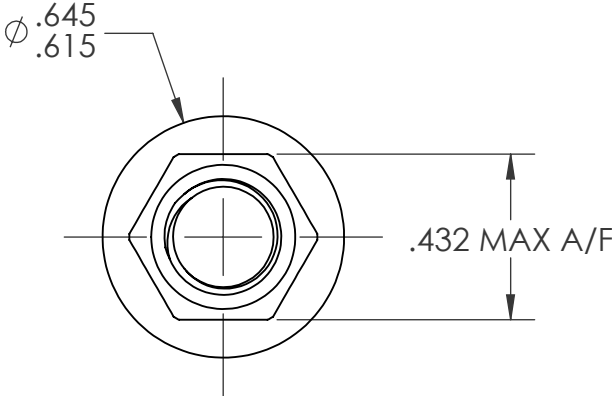
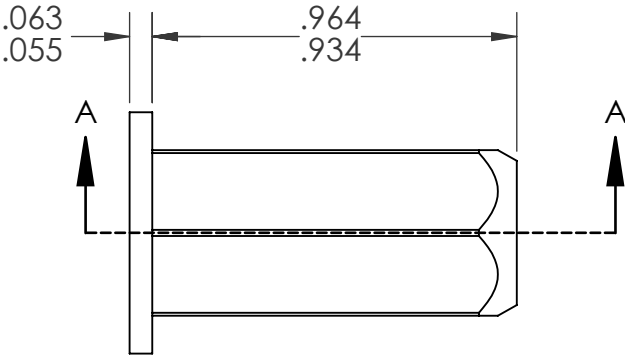
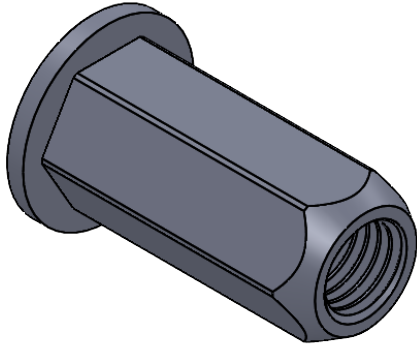
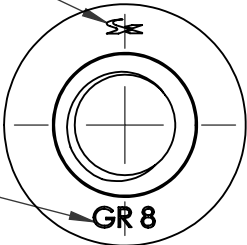


REVISIONS				
REV.	DESCRIPTION	DATE	ECN	INITIALS
A	INITIAL RELEASE	8/29/24	4528	PMZ

SHEREX
HEAD STAMP

GRADE CALLOUT



5/16-24 UNF 2B
PER ASME B1.1
MINOR DIA.: 0.267 - 0.277

SECTION A-A

- NOTE:
- GRIP RANGE: .118 - .197
 - HOLE SIZE: .433 +.006/-.000 A/F AFTER ALL APPLIED FINISHES.
 - INSTALLED LENGTH: .634 MAX
 - LUBRICATION: NONE
 - INSTALLATION TOOL: FLEX18/RIV943
 - THREADS MEET GRADE 8 PROOF LOAD PER SAE J995: 8700LBF

PROPRIETARY AND CONFIDENTIAL

THIS DRAWING, AND THE INFORMATION CONTAINED HEREIN, ARE THE PROPERTY OF SHEREX AND ARE NOT TO BE USED IN ANY MANNER DETRIMENTAL TO THE INTEREST OF THE COMPANY.

SHEREX SOLUTIONS RESERVES THE RIGHT TO REVISE PART/DRAWING WITHOUT NOTICE.

UNLESS OTHERWISE SPECIFIED, ALL SPECIFICATIONS REFERENCED ON THIS DRAWING WILL PERTAIN TO THE MOST RECENT AND ACTIVE REVISION.

		UNLESS OTHERWISE SPECIFIED:		NAME	DATE
		DIMENSIONS ARE IN INCHES TOLERANCES: ANGULAR: MACH ± 1 BEND ± 1 TWO PLACE DECIMAL ±.01 THREE PLACE DECIMAL ±.005	DRAWN	PMZ	8/29/24
		INTERPRET GEOMETRIC TOLERANCING PER: ASME Y14.5M-1994	CHECKED		
		MATERIAL	ENG APPR.	JVK	8/29/24
		10B21	MFG APPR.	AP	8/29/24
		FINISH	Q.A.		
		ZINC PLATE CLEAR TRIVALENT CHROMATE PER SHEREX SFS-01-001 SC1	COMMENTS: E-mail: info@sherex.com www.sherex.com Phone: 866-474-3739 Fax: 716-875-0358		
NEXT ASSY	USED ON				
APPLICATION		DO NOT SCALE DRAWING			



TITLE:
**LARGE FLANGE FULL HEX
HIGH STRENGTH**

SIZE A	DWG. NO. HHS2-3124-197	REV A
SCALE: 2:1 WEIGHT:		SHEET 1 OF 1