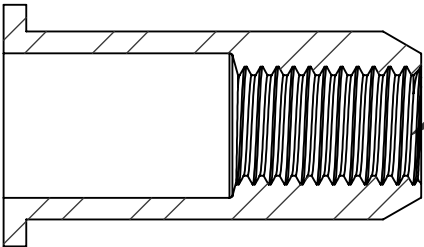
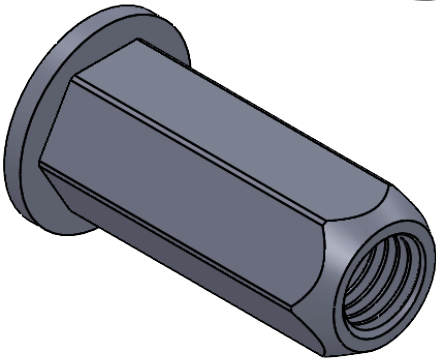
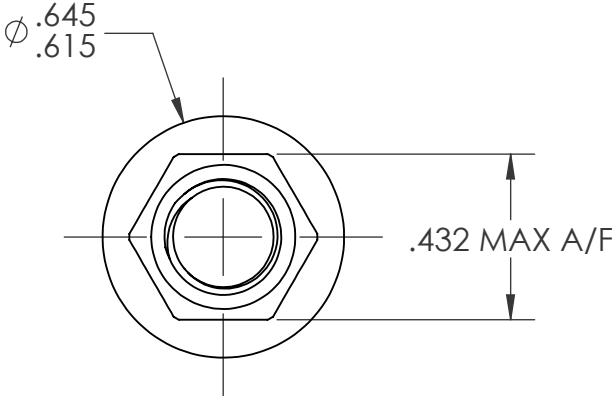
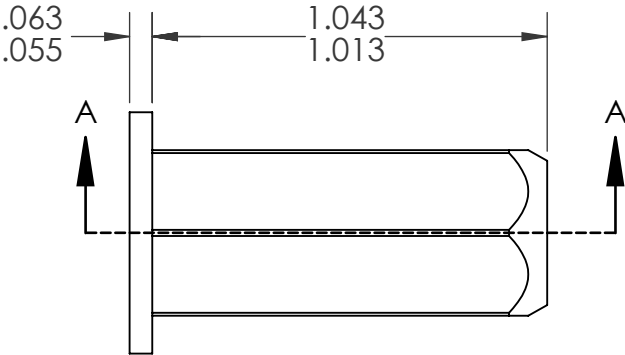
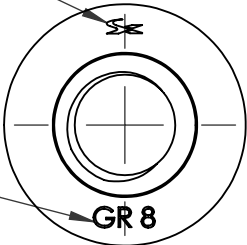


REVISIONS				
REV.	DESCRIPTION	DATE	ECN	INITIALS
A	INITIAL RELEASE	8/29/24	4528	PMZ

SHEREX
HEAD STAMP

GRADE CALLOUT



SECTION A-A

5/16-24 UNF 2B
PER ASME B1.1
MINOR DIA.: 0.267 - 0.277

- NOTE:
- GRIP RANGE: .197 - .276
 - HOLE SIZE: .433 +.006/-.000 A/F AFTER ALL APPLIED FINISHES.
 - INSTALLED LENGTH: .634 MAX
 - LUBRICATION: NONE
 - INSTALLATION TOOL: FLEX18/RIV943
 - THREADS MEET GRADE 8 PROOF LOAD PER SAE J995: 8700LBF

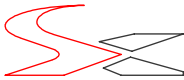
PROPRIETARY AND CONFIDENTIAL

THIS DRAWING, AND THE INFORMATION CONTAINED HEREIN, ARE THE PROPERTY OF SHEREX AND ARE NOT TO BE USED IN ANY MANNER DETRIMENTAL TO THE INTEREST OF THE COMPANY.

SHEREX SOLUTIONS RESERVES THE RIGHT TO REVISE PART/DRAWING WITHOUT NOTICE.

UNLESS OTHERWISE SPECIFIED, ALL SPECIFICATIONS REFERENCED ON THIS DRAWING WILL PERTAIN TO THE MOST RECENT AND ACTIVE REVISION.

		UNLESS OTHERWISE SPECIFIED: DIMENSIONS ARE IN INCHES TOLERANCES: ANGULAR: MACH ± 1 BEND ± 1 TWO PLACE DECIMAL ± .01 THREE PLACE DECIMAL ± .005 INTERPRET GEOMETRIC TOLERANCING PER: ASME Y14.5M-1994 MATERIAL 10B21 FINISH ZINC PLATE CLEAR TRIVALENT CHROMATE PER SHEREX SFS-01-001 SC1		NAME	DATE
			DRAWN	PMZ	8/29/24
			CHECKED		
			ENG APPR.	JVK	8/29/24
			MFG APPR.	AP	8/29/24
			Q.A.		
			COMMENTS: E-mail: info@sherex.com www.sherex.com Phone: 866-474-3739 Fax: 716-875-0358		
NEXT ASSY	USED ON				
APPLICATION		DO NOT SCALE DRAWING			



TITLE:

**LARGE FLANGE FULL HEX
HIGH STRENGTH**

SIZE	DWG. NO.	REV
A	HHS2-3124-276	A
SCALE: 2:1 WEIGHT:		SHEET 1 OF 1