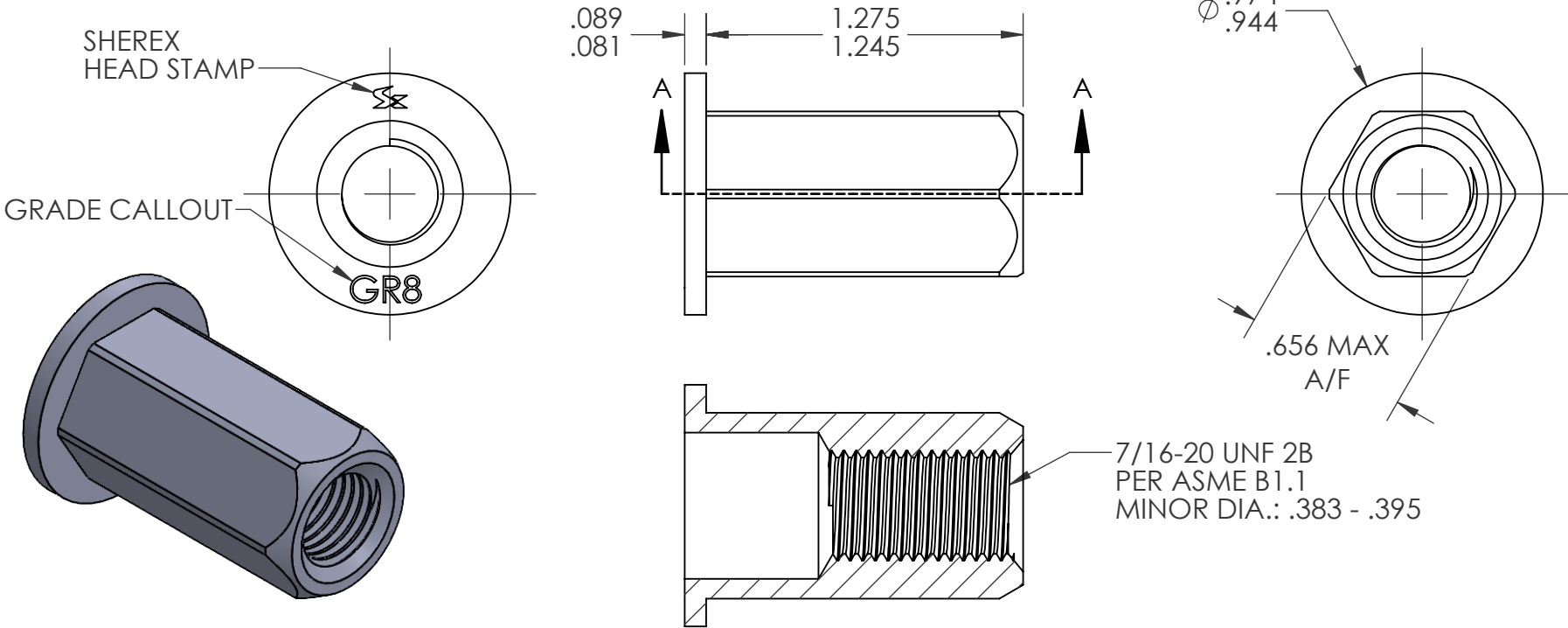


| REVISIONS | | | | |
|-----------|-----------------|--------|------|----------|
| REV. | DESCRIPTION | DATE | ECN | INITIALS |
| A | INITIAL RELEASE | 9/4/24 | 4528 | PMZ |



- NOTE:
- GRIP RANGE: .040 - .118
 - HOLE SIZE: .657 +.006/-.000 A/F AFTER ALL APPLIED FINISHES.
 - INSTALLED LENGTH: .984 MAX
 - LUBRICATION: NONE
 - INSTALLATION TOOL: FLEX 18 SPIN PULL
 - THREADS MEET GRADE 8 PROOF LOAD PER SAE J995: 17,805LBF

PROPRIETARY AND CONFIDENTIAL

THIS DRAWING, AND THE INFORMATION CONTAINED HEREIN, ARE THE PROPERTY OF SHEREX AND ARE NOT TO BE USED IN ANY MANNER DETRIMENTAL TO THE INTEREST OF THE COMPANY.

SHEREX SOLUTIONS RESERVES THE RIGHT TO REVISE PART/DRAWING WITHOUT NOTICE.

UNLESS OTHERWISE SPECIFIED, ALL SPECIFICATIONS REFERENCED ON THIS DRAWING WILL PERTAIN TO THE MOST RECENT AND ACTIVE REVISION.

| | | | | | |
|-------------|---------|--|--|------|--------|
| | | UNLESS OTHERWISE SPECIFIED: | | NAME | DATE |
| | | DIMENSIONS ARE IN INCHES TOLERANCES: ANGULAR: MACH ± 1 BEND ±1 TWO PLACE DECIMAL ±.01 THREE PLACE DECIMAL ±.005 | DRAWN | PMZ | 9/4/24 |
| | | INTERPRET GEOMETRIC TOLERANCING PER: ASME Y14.5M-1994 | CHECKED | | |
| | | | ENG APPR. | JVK | 9/4/24 |
| | | | MFG APPR. | AP | 9/4/24 |
| | | MATERIAL 10B21 | Q.A. | | |
| | | FINISH ZINC PLATE CLEAR TRIVALENT CHROMATE PER SHEREX SFS-01-001 SC1 | COMMENTS: E-mail: info@sherex.com www.sherex.com Phone: 866-474-3739 Fax: 716-875-0358 | | |
| NEXT ASSY | USED ON | | | | |
| APPLICATION | | DO NOT SCALE DRAWING | | | |

| | | |
|---|---------------------------|--------------|
|  | | |
| TITLE: FULL HEX HIGH STRENGTH | | |
| SIZE A | DWG. NO. HHS2-4320-118 | REV A |
| SCALE: 3:2 WEIGHT: | | SHEET 1 OF 1 |