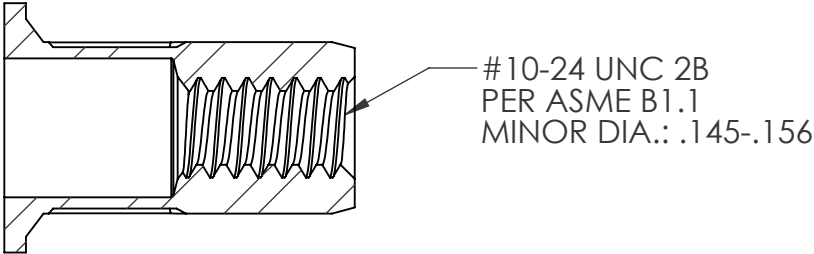
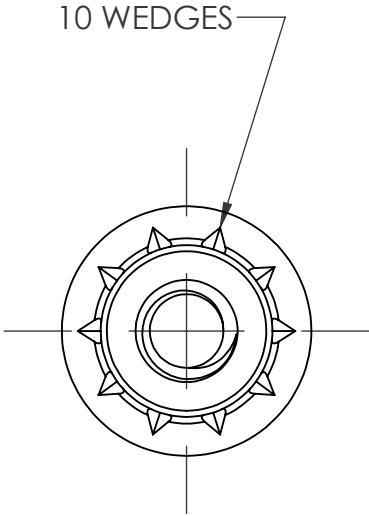
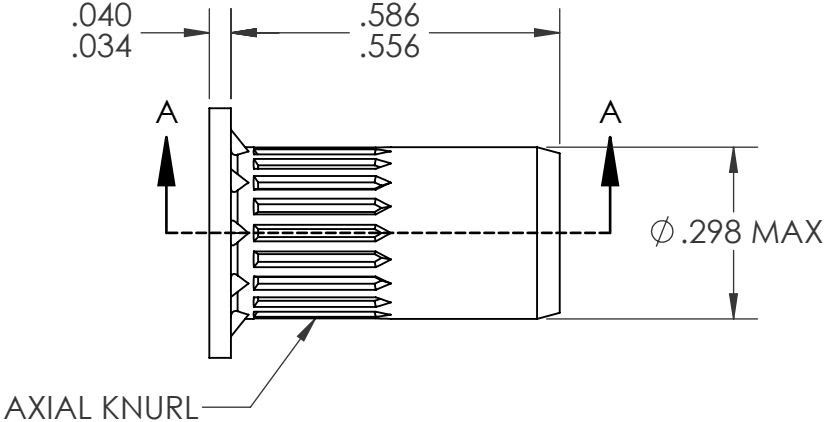
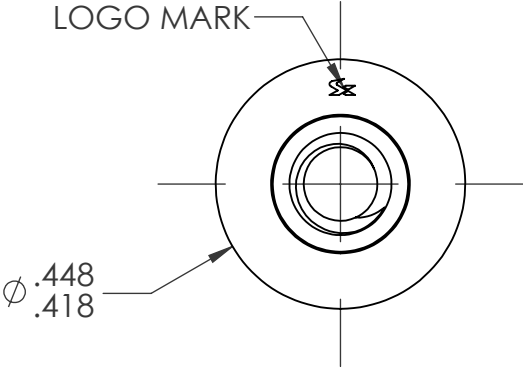



REVISIONS				
REV.	DESCRIPTION	DATE	ECN	INITIALS
A	INITIAL RELEASE	9/3/24	4526	PMZ



SECTION A-A

- NOTE:
- GRIP RANGE: .059-.118
 - HOLE SIZE: .300 +.006/- .000 AFTER ALL APPLIED FINISHES.
 - INSTALLED LENGTH: .413 MAX.
 - LUBRICATION: NONE
 - INSTALLATION TOOL: SPIN PULL

CUSTOMER APPROVAL: _____ DATE: _____						UNLESS OTHERWISE SPECIFIED:				NAME		DATE			
						DIMENSIONS ARE IN INCHES TOLERANCES: ANGULAR: MACH ± 1 BEND ± 1 ONE PLACE DECIMAL ± 0.01 TWO PLACE DECIMAL ± 0.005		DRAWN		PMZ		9/3/24			
PROPRIETARY AND CONFIDENTIAL <small>THIS DRAWING, AND THE INFORMATION CONTAINED HEREIN, ARE THE PROPERTY OF SHEREX AND ARE NOT TO BE USED IN ANY MANNER DETRIMENT TO THE INTEREST OF THE COMPANY.</small> <small>SHEREX SOLUTIONS RESERVES THE RIGHT TO REVISE PART/DRAWING WITHOUT NOTICE.</small> <small>UNLESS OTHERWISE SPECIFIED, ALL SPECIFICATIONS REFERENCED ON THIS DRAWING WILL PERTAIN TO THE MOST RECENT AND ACTIVE REVISION.</small>		NEXT ASSY USED ON		APPLICATION		MATERIAL 302 STAINLESS FINISH NONE		INTERPRET GEOMETRIC TOLERANCING PER: ASME Y14.5M-1994		ENG APPR.		JVK		9/3/24	
								MFG APPR.							
								Q.A.							
								COMMENTS: E-mail: info@sherex.com www.sherex.com Phone: 866-474-3739 Fax: 716-875-0358		TITLE: #10-24 OPEN END LARGE FLANGE OPTISERT		SIZE DWG. NO. A OPT1-1024-118		REV A	
										SCALE: 3:1		WEIGHT:		SHEET 1 OF 1	